



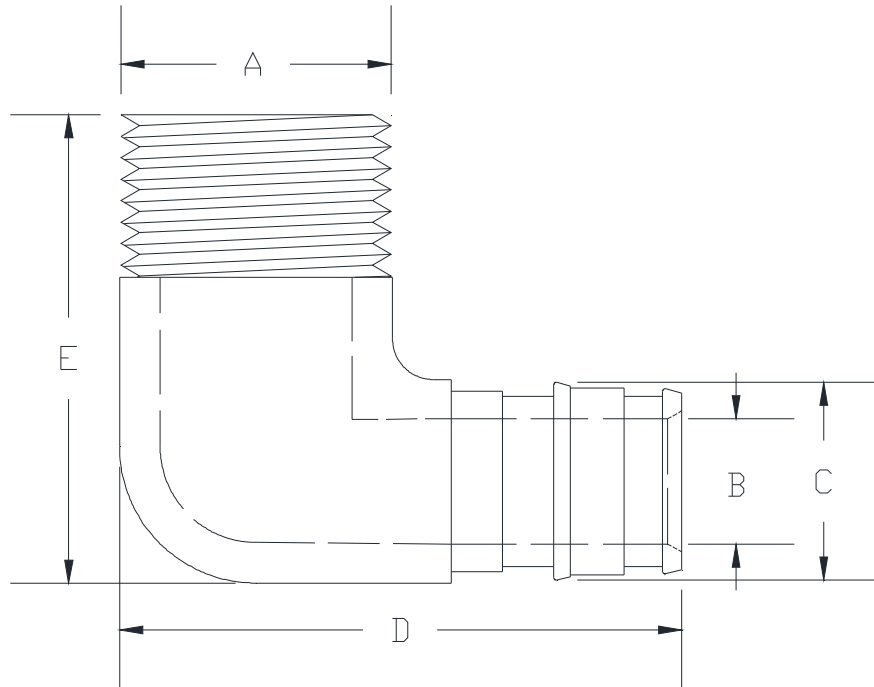
QEE_BTGX

XL BRASS F1960 EXPANSION PEX x MALE
THREADED ELBOW

SPECIFICATION SHEET

TAG _____

Dimensional Data (inches and [mm]) are Subject to Manufacturing Tolerances and Change Without Notice



Part Number	XL Brass F1960 Expansion PEX x Male Threaded Elbow Size	Dimensions in In [mm]				
		A	B	C	D	E
QEE33BTGX	1/2" EX PEX x 1/2" MPT	1/2 NPT	0.38 [10]	0.61 [16]	1.66 [42]	1.41 [36]

Engineering Specification: Zurn PEX® XL-Low Lead Brass F1960 Expansion PEX x Male Threaded Elbow
 The QEE__BTGX is used with Zurn Non-Barrier Pex tubing in potable water applications. Not for use in reverse osmosis systems or in areas with known localized aggressive water chemistries. Manufactured from EcoBrass®, C69300. These fittings, as a system with Zurn PEX® tube and Zurn PEX reinforcing rings are pressure rated at 160 PSI at 73°F, 100 PSI at 180°F, and 80 PSI at 200°F. These fittings are 3rd Party certified as complying with the following standards: NSF/ANSI Standard 61, NSF/ANSI Standard 372 (Low Lead), ASTM F1960, CSA B137.5

Accessories

- ___ QER3X 1/2" PEX Expansion Reinforcing Ring w/Stop
- ___ QEMT345 F1960 Manual Expansion Tool Kit - 1/2" to 1"