

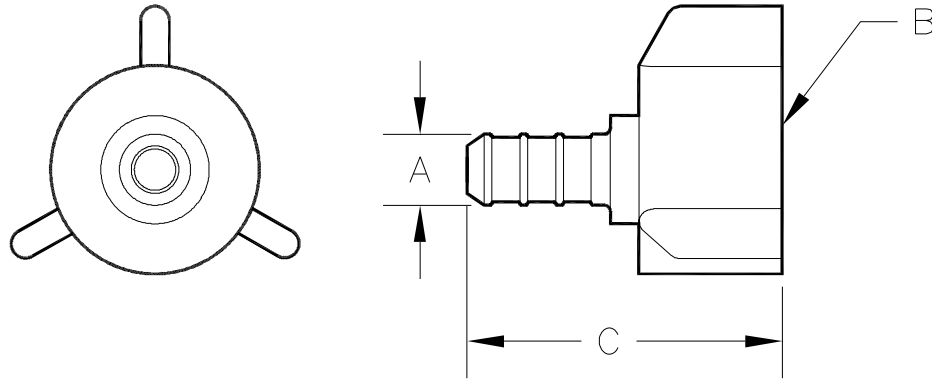


QickSert CR™ Barb x 1/2" Female Thread Swivel Adpater QQPSFC__X

Specification Sheet

Tag _____

Dimensional Data: Inches and [mm] are subject to manufacturing tolerances and change without notice.



Part Number	Description	'A' in [mm]	'B' in [mm]	'C' in [mm]
QQPSFC23X	3/8" Barb x 1/2" Female NPT Swivel Adapter	0.347" [8.8]	1/2" - 14	1.69" [42.9]
QQPSFC33X	1/2" Barb x 1/2" Female NPT Swivel Adapter	0.473" [12.0]	1/2" - 14	1.69" [42.9]
QQPSFC44X	3/4" Barb x 3/4" Female NPT Swivel Adapter	0.668" [17.0]	3/4" - 14	1.66" [42.1]

Engineering Specification: ZurnPEX® QickSert CR™ Barb x female thread swivel adapter. The QQPSFC__X adapter is used to transition from PEX to male pipe threads. Molded from Acudel®. These fittings, as a system with Zurn PEX® tube, are pressure rated at 160 PSI at 73°F, 100 PSI at 180°F, and 80 PSI at 200°F. These fittings are listed by NSF as complying with the following standards: NSF/ANSI Standard 14, NSF/ANSI Standard 61, ASTM F877, and CSA B137.5, and ASTM F2159.

Accessories

- ___ **QCLP2X** 3/8" QickClamp™ Crimp Ring
- ___ **QCLP3X** 1/2" QickClamp™ Crimp Ring
- ___ **QCLP4X** 3/4" QickClamp™ Crimp Ring
- ___ **QCR2X** 3/8" Copper Crimp Ring
- ___ **QCR3X** 1/2" Copper Crimp Ring
- ___ **QCR4X** 3/4" Copper Crimp Ring

Rev. A	Date: 06/26/08	C.N. No. 98691
Dwg. No. 82188		Prod. No. QQPSFC__X