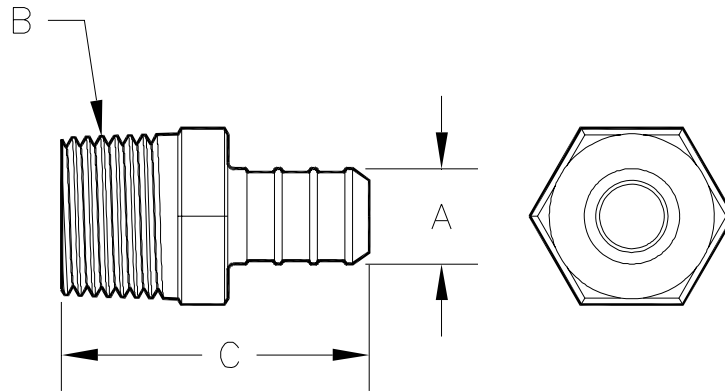




QuickSert CR™ Barb x MPT Adapter QQPMC__X Specification Sheet

Tag _____

Dimensional Data: Inches and [mm] are subject to manufacturing tolerances and change without notice.



Part Number	Description	'A' in [mm]	'B' in [mm]	'C' in [mm]
QQPMC33X	1/2" Barb x 1/2" MPT Adapter	0.473" [12.0]	1/2" - 14 NPT	1.53" [38.9]
QQPMC34X	1/2" Barb x 3/4" MPT Adapter	0.473" [12.0]	3/4" - 14 NPT	1.64" [41.7]
QQPMC44X	3/4" Barb x 3/4" MPT Adapter	0.668" [17.0]	3/4" - 14 NPT	1.64" [41.7]
QQPMC55X	1" Barb x 1" MPT Adapter	0.856" [21.7]	1" - 14 NPT	2.21" [56.1]

Engineering Specification: ZurnPEX® QuickSert CR™ male adapter. The QQPMC__X adapter to transition from female pipe thread to PEX tubing. Molded from Acudel®. These fittings, as a system with Zurn PEX® tube, are pressure rated at 160 PSI at 73°F, 100 PSI at 180°F, and 80 PSI at 200°F. These fittings are listed by NSF as complying with the following standards: NSF/ANSI Standard 14, NSF/ANSI Standard 61, ASTM F877, and CSA B137.5, and ASTM F2159.

Accessories

- ___ **QCLP3X** 1/2" QuickClamp™ Crimp Ring
- ___ **QCLP4X** 3/4" QuickClamp™ Crimp Ring
- ___ **QCLP5X** 1" QuickClamp™ Crimp Ring
- ___ **QCR3X** 1/2" Copper Crimp Ring
- ___ **QCR4X** 3/4" Copper Crimp Ring
- ___ **QCR5X** 1" Copper Crimp Ring

Rev. A	Date: 06/26/08	C.N. No. 98687
Dwg. No. 82184		Prod. No. QQPMC__X