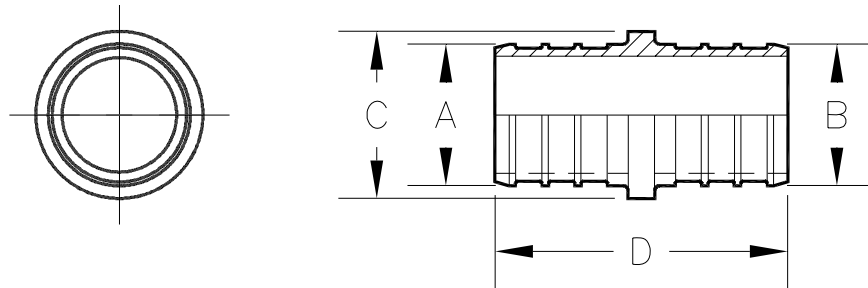




QickSert CR™ QQPC__X Specification Sheet

Tag _____

Dimensional Data: Inches and [mm] are subject to manufacturing tolerances and change without notice.



Part Number	Description	'A' in [mm]	'B' in [mm]	'C' in [mm]	'D' in [mm]
QQPC33X	1/2" Barb x 1/2" Barb Coupling	0.473" [12.0]	0.473" [12.0]	0.68" [17.3]	1.50" [38.1]
QQPC44X	3/4" Barb x 3/4" Barb Coupling	0.668" [17.0]	0.668" [17.0]	0.93" [23.6]	1.50" [38.1]
QQPC34X	1/2" Barb x 3/4" Barb Coupling	0.473" [12.0]	0.668" [17.0]	0.93" [23.6]	1.50" [38.1]
QQPC45X	3/4" Barb x 1" Barb Coupling	0.668" [17.0]	0.856" [21.7]	0.95" [24.1]	1.83" [46.5]
QQPC55X	1" Barb x 1" Barb Coupling	0.856" [21.7]	0.856" [21.7]	0.95" [24.1]	1.83" [46.5]

Engineering Specification: ZurnPEX™ QickSert CR™ coupling. The QQPC__X coupling is used to connect PEX tubing to PEX tubing. Molded from Acudel®. These fittings, as a system with Zurn PEX tube, are pressure rated at 160 PSI at 73°F, 100 PSI at 180°F, and 80 PSI at 200°F. These fittings are listed by NSF as complying with the following standards: NSF/ANSI Standard 14, NSF/ANSI Standard 61, ASTM F877, and CSA B137.5, and ASTM F2159.

Accessories

- ___ **QCLP3X** 1/2" QickClamp Crimp Ring
- ___ **QCLP4X** 3/4" QickClamp Crimp Ring
- ___ **QCLP5X** 1" QickClamp Crimp Ring
- ___ **QCR3X** 1/2" Copper Crimp Ring
- ___ **QCR4X** 3/4" Copper Crimp Ring
- ___ **QCR5X** 1" Copper Crimp Ring

Rev. A	Date: 06/26/08	C.N. No. 98686
Dwg. No. 82183		Prod. No. QQPC__X