

QICKTITE® - NUT/RING/CONE



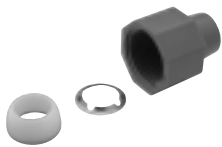
FOR USE WITH PEX, COPPER, CPVC AND PB

Warning: Acetal male pipe threads must not be used for mating to metal female pipe thread.

Sets						
Product No.	Description	Qty	Carton	Weight lb	Weight kg	Category
QFNCR1	1/2" Thread size; 1/4" Nom. Tube size	100	1000	2.8	1.27	22
QBFNCR1*	1/2" Thread size; 1/4" Nom. Tube size	100	1000	3.1	1.41	22
Includes QFN1 – 3/8" Nut, QC1 – 3/8" Cone, QR1 – 3/8" Ring						
QFNCR2	1/2" Thread size; 3/8" Nom. Tube size	100	1000	2.8	1.27	22
QBFNCR2*	1/2" Thread size; 3/8" Nom. Tube size	100	1000	3.4	1.54	22
Includes QFN2 – 1/2" Nut, QC2 – 1/2" Cone, QR2 – 1/2" Ring						
QFNCR3	3/4" Thread size; 1/2" Nom. Tube size	100	1000	3.8	1.72	22
QBFNCR3*	3/4" Thread size; 1/2" Nom. Tube size	100	1000	4.3	1.95	22
Includes QFN3 – 5/8" Nut, QC3 – 5/8" Cone, QR3 – 5/8" Ring						
QFNCR4	1" Thread size; 3/4" Nom. Tube size	25	250	1.3	.59	22
QBFNCR4*	1" Thread size; 3/4" Nom. Tube size	25	250	1.5	.68	22
Includes QFN4 – 7/8" Nut, QC4 – 7/8" Cone, QR4 – 7/8" Ring						
QFNCR5	1-1/4" Thread size; 1" Nom. Tube size	25	250	2.0	.91	22
QBFNCR5*	1-1/4" Thread size; 1" Nom. Tube size	25	250	2.1	.95	22
Includes QFN5 – 1-1/8" Nut, QC5 – 1-1/8" Cone, QR5 – 1-1/8" Ring.						
*Note: B indicates 1 nut, 1 ring, 1 cone individually polybagged.						



Individual Pieces						
Product No.	Description	Qty	Carton	Weight lb	Weight kg	Category
QC1	Cone – 1/4"	100	1000	.2	.09	22
QC2	Cone – 3/8"	100	1000	.2	.09	22
QC3	Cone – 1/2"	100	1000	.4	.18	22
QC4	Cone – 3/4"	25	1000	.1	.05	22
QC5	Cone – 1"	25	1000	.1	.06	22
QR1	Ring – 1/4"	100	1000	.1	.05	22
QR2	Ring – 3/8"	100	1000	.1	.05	22
QR3	Ring – 1/2"	100	1000	.1	.05	22
QR4	Ring – 3/4"	25	1000	.1	.02	22
QR5	Ring – 1"	25	1000	.1	.03	22
QFN1	Nut – 1/4"	100	1000	2.2	1.00	22
QFN2	Nut – 3/8"	100	1000	2.2	1.00	22
QFN3	Nut – 1/2"	100	1000	3.4	1.54	22
QFN4	Nut – 3/4"	25	1000	1.3	.59	22
QFN5	Nut – 1"	25	1000	3.8	1.36	22



FOR NOMINAL TUBE SIZE (I.D.)	BEST FITTING THREAD SIZE	USE	QICKTITE® NUT/RING/CONE SET
1/4"	1/2"	—————>	QFNCR1
3/8"	1/2"	—————>	QFNCR2
1/2"	3/4"	—————>	QFNCR3
3/4"	1"	—————>	QFNCR4
1"	1-1/4"	—————>	QFNCR5

Qicktite Fittings