

# QICKTITE® UNASSEMBLED FITTING SYSTEM



FOR USE WITH PEX, COPPER, CPVC AND PB

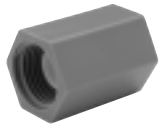
Warning: Acetal male pipe threads must not be used for mating to metal female pipe thread.



## Female Elbows

Product No.	Description	Size	Qty	Carton	Weight		Category
					lb	kg	
QSE33TF	Female Elbow – (3/8" or 1/4") x 1/2" FPT**	1/2" MPT x 1/2" FPT	50	500	2.5	1.13	22
QSE43TF	Female Elbow – 1/2" x 1/2" FPT	3/4" MPT x 1/2" FPT	50	500	2.8	1.27	22
QSE44TF	Female Elbow – 1/2" x 3/4" FPT	3/4" MPT x 3/4" FPT	25	500	2.0	.91	22
QDE33TF	Drop Ear Elbow – (3/8" or 1/4") x 1/2" FPT**	1/2" MPT x 1/2" FPT	50	500	3.8	1.72	22
QDE43TF	Drop Ear Elbow – 1/2" x 1/2" FPT	3/4" MPT x 1/2" FPT	50	500	4.1	1.86	22
QDE44TF	Drop Ear Elbow – 1/2" x 3/4" FPT	3/4" MPT x 3/4" FPT	50	500	6.0	2.72	22
QDE54TF	Drop Ear Elbow – 3/4" x 3/4" FPT	1" MPT x 3/4" FPT	50	500	6.2	2.81	22

\*\*Zurn 1/2" Male Thread accepts either QFN1 Nut for 1/4" Nom. tubing or QFN2 Nut for 3/8" Nom. tubing.



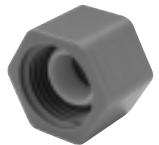
## Female Couplings

Product No.	Description	Size	Qty	Carton	Weight		Category
					lb	kg	
QC33F	Female Coupling	1/2" FPT x 1/2" FPT	100	1000	4.2	1.91	22
QC44F	Female Coupling	3/4" FPT x 3/4" FPT	50	500	3.1	1.41	22
QC55F	Female Coupling	1" FPT x 1" FPT	50	500	4.3	1.95	22



## Adapters

Product No.	Description	Size	Qty	Carton	Weight		Category
					lb	kg	
QC43TF	Adapter	3/4" MPT x 1/2" FPT	100	1000	4.1	1.86	22
QC54TF	Adapter	1" MPT x 3/4" FPT	50	250	3.4	1.54	22
QC55TF	Adapter	1" MPT x 1" FPT	50	250	4.3	1.95	22
QC64TF	Adapter	1-1/4" MPT x 3/4" FPT	10	250	.9	.41	22
QC65TF	Adapter	1-1/4" MPT x 1" FPT	10	250	1.0	.45	22



## Test Caps/Plugs

Product No.	Description	Size	Qty	Carton	Weight		Category
					lb	kg	
QTC3F	Test Cap	1/2" FPT	100	1000	2.5	1.13	22
QTC4F	Test Cap	3/4" FPT	50	500	1.8	.82	22
QTP3T	Test Plug	1/2" MPT	100	1000	1.6	.72	22
QTP4T	Test Plug	3/4" MPT	100	1000	2.2	1.00	22

NOTE: All female fittings shown are complete with internal seal.