

WALKERDUCT® UNDERFLOOR DUCT SYSTEMS



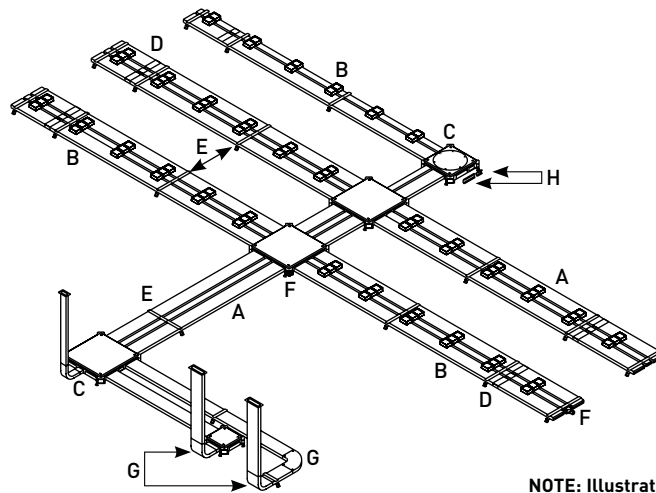
Walkerdut® Underfloor Duct Systems offer maximum capacity and configurability using two sizes of duct.

CODE REFERENCE

ULus Listed Underfloor Raceway:
File E7020 Guide RKCZ

cULus Listed Underfloor Raceway Fittings:
File E11912 Guide RKQX.
Meets Article 390 of NEC.

Walkerdut Pro Series System Layout with Junction Boxes

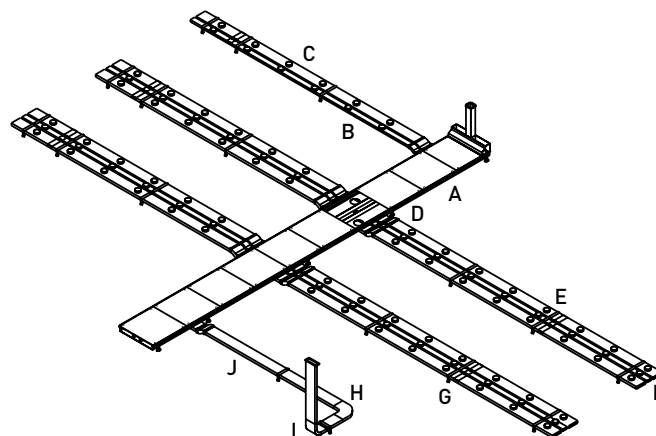


NOTE: Illustration is for showing product applications only.

KEY

- A. Duct
- B. Pro Series Preset
- C. Junction Box
- D. Coupling
- E. Duct Support
- F. Conduit Adapter
- G. Elbow
- H. Junction Box Closure

Walkerdut 2" [51mm] IPS Duct System Layout with Trenchduct



NOTE: Illustration is for showing product applications only.

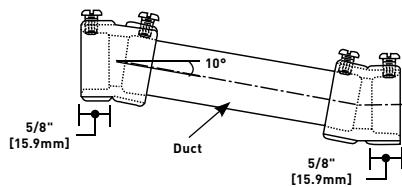
KEY

- A. Trenchduct
- B. #2 2" IPS Duct
- C. #4 2" IPS Duct
- D. Cross Under
- E. Couplings
- F. End Closure
- G. Duct Support
- H. Horizontal Flat Elbow
- I. Vertical Elbow
- J. Blank #4 Duct

WALKERDUCT® UNDERFLOOR DUCT SYSTEMS

Walkerduct Duct Accessories Ordering Information (continued)

Variable Offset



PART NUMBERS:

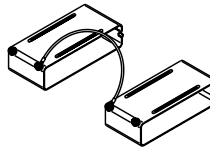
375 (For No. 2 Duct)

H375 (For No. 4 Duct)

Used to raise or lower a run of duct from 5/16 [7.9mm] to 3 1/2 [89mm]. Field cut duct based on chart below.

FOR OFFSET	DUCT CUT (LENGTH)	FOR OFFSET	DUCT CUT (LENGTH)
5/16" [7.9mm]	1 3/8" [35mm]	1" [25mm]	5 3/8" [137mm]
3/8" [9.5mm]	1 3/4" [44mm]	1 1/4" [32mm]	6 13/16" [173mm]
7/16" [11.1mm]	2 1/8" [54mm]	1 1/2" [38mm]	8 1/4" [210mm]
1/2" [12.7mm]	2 1/2" [64mm]	1 3/4" [45mm]	9 11/16" [246mm]
9/16" [14.3mm]	2 7/8" [73mm]	2" [51mm]	11 1/4" [286mm]
5/8" [15.9mm]	3 1/4" [83mm]	2 1/4" [57mm]	12 9/16" [319mm]
11/16" [17.5mm]	3 1/2" [89mm]	2 1/2" [64mm]	14" [356mm]
3/4" [19.1mm]	3 7/8" [98mm]	2 3/4" [70mm]	15 7/16" [392mm]
13/16" [20.6mm]	4 1/4" [108mm]	3" [76mm]	16 7/8" [429mm]
7/8" [22.2mm]	4 5/8" [118mm]	3 1/4" [83mm]	18 5/16" [465mm]
15/16" [23.8mm]	5" [127mm]	3 1/2" [89mm]	19 3/4" [502mm]

Expansion Sleeve Joints



PART NUMBERS:

382 (For No. 2 Duct)

H382 (For No. 4 Duct)

Slip over two sections of duct. Outside screws fasten and ground sleeves of duct.

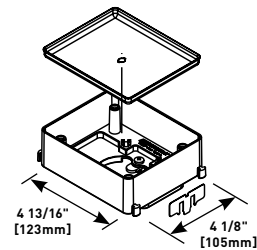
290C Waterproof Sealing Compound



Three tubes, 10.1 fluid ounces each. Will seal approximately 100 couplings, (12) three-duct boxes, (25) two-duct boxes, or (50) single-duct boxes.

Walkerduct Aftersets & Accessories Ordering Information

Pro Series Afterset



PART NUMBERS:

4210 = 1" [25mm]

4215 = 1 1/2" [38mm]

4220 = 2" [51mm]

4225 = 2 1/2" [64mm]

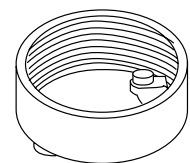
4230 = 3" [76mm]

Installed either before or after concrete pour to create activation from duct.

NOTE: Drill a 6 1/2" [165mm] hole in concrete and a 2 1/2" [64mm] hole in duct.

NOTE: Need minimum of 1 1/2" height for power.

2" [51mm] IPS Duct Round Afterset



PART NUMBERS:

436-2-7/8 = 7/8" [22.2mm]

436-2-1 1/2 = 1 1/2" [38mm]

436-2-2 = 2" [51mm]

436-2-23/8 = 2 3/8" [60mm]

436-2-3 = 3" [76mm]

Installed either before or after concrete pour to create activation from duct.

NOTE: Drill a 2 1/2" [64mm] hole in concrete and a 2 1/4" [57mm] hole in duct.

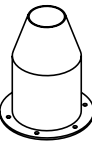
H14ABD Afterset Access Assembly



Provides access to pull large number of cables out of duct at one activation. Neoprene boot to protect wires not included. Use 6ER- Extension Ring when additional height is required.

12S-CVRPLT Ø=5 23/32

H14-BA Afterset Access Assembly Neoprene Boot



Used with H14ABD to protect cables coming out of duct.

H14-AS Complete Access Activation



For access to large number of cables for activation. Use 6ER- Extension Ring when additional height is required.