

WMFB SERIES™ FLOOR BOXES



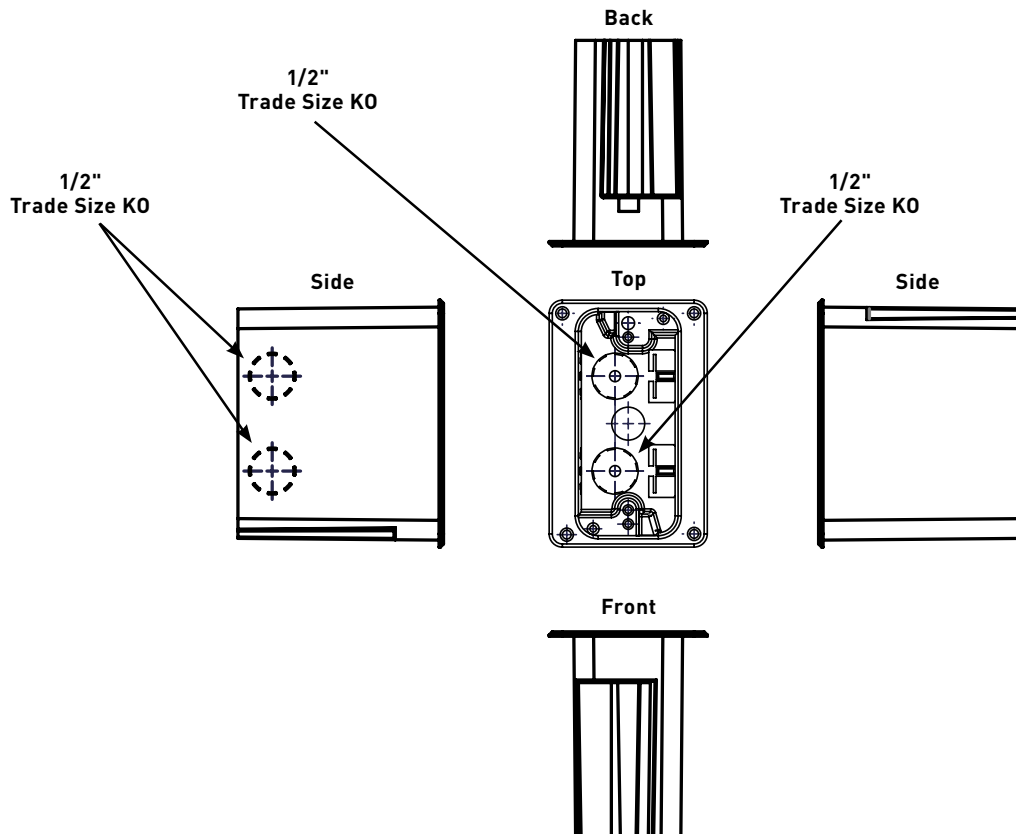
Multi-Service Floor Box Assembly Kits for Wood Floors for New and Retrofit Residential Applications.

CODE REFERENCE

cULus Listed
Nonmetallic Outlet Boxes:
 File E143222 Guide QCMZ.

WMFB Series Floor Boxes Ordering Information

Knockouts:



COLOR OPTIONS



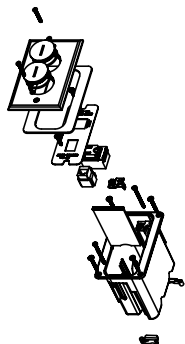
WMFB Series™ Cover Plates are available in these colors as indicated in the part number descriptions.

Custom color options are also available. Consult the factory for more information.

WMFB SERIES™ FLOOR BOXES

WMFB Series Floor Boxes Ordering Information (continued)

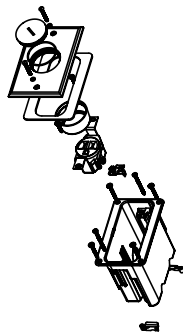
WMFB1SRKS1B Single-Gang Floor Box Assembly



Includes single-gang box, divider, one 15A, 125V receptacle, one opening for communication device and brass cover with two screw plugs. For hole cut dimensions, see installation instructions sheet.

Box Dimensions:
 2 1/8" W x 3 3/4" L x 3 7/8" D
 [54mm W x 95mm L x 98mm D]
Device Plate:
 3 1/8" W x 4 15/16" L
 [79mm W x 125mm L]

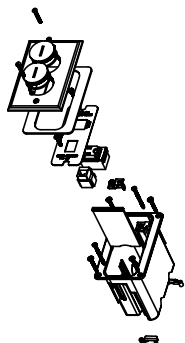
WMFB1SRB Single-Gang Floor Box Assembly



Includes single-gang box, one 15A tamper-resistant receptacle and brass cover with one screw plug. For hole cut dimensions, see installation instructions sheet.

Box Dimensions:
 2 1/8" W x 3 3/4" L x 3 7/8" D
 [54mm W x 95mm L x 98mm D]
Device Plate:
 3 1/8" W x 4 15/16" L
 [79mm W x 125mm L]

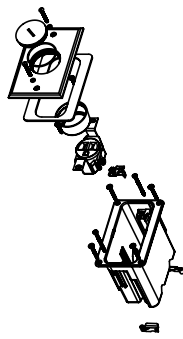
WMFB1SRKS1N Single-Gang Floor Box Assembly



Includes single-gang box, divider, one 15A, 125V receptacle, one opening for communication device and nickel cover with two screw plugs. For hole cut dimensions, see installation instructions sheet.

Box Dimensions:
 2 1/8" W x 3 3/4" L x 3 7/8" D
 [54mm W x 95mm L x 98mm D]
Device Plate:
 3 1/8" W x 4 15/16" L
 [79mm W x 125mm L]

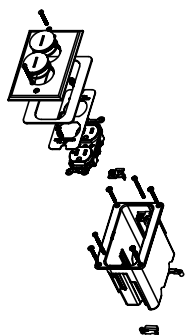
WMFB1SRN Single-Gang Floor Box Assembly



Includes single-gang box, one 15A tamper-resistant receptacle and nickel cover with one screw plug. For hole cut dimensions, see installation instructions sheet.

Box Dimensions:
 2 1/8" W x 3 3/4" L x 3 7/8" D
 [54mm W x 95mm L x 98mm D]
Device Plate:
 3 1/8" W x 4 15/16" L
 [79mm W x 125mm L]

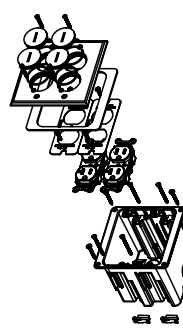
WMFB1DRB Single-Gang Floor Box Assembly



Includes single-gang box, one 15A, 125V tamper-resistant receptacle and brass cover with two screw plugs. For hole cut dimensions, see installation instructions sheet.

Box Dimensions:
 2 1/8" W x 3 3/4" L x 3 7/8" D
 [54mm W x 95mm L x 98mm D]
Device Plate:
 3 1/8" W x 4 15/16" L
 [79mm W x 125mm L]

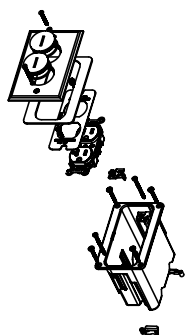
WMFB2DR2B Dual-Gang Floor Box Assembly



Includes dual-gang box, two 15A tamper-resistant duplex receptacles and brass cover with four screw plugs. For hole cut dimensions, see installation instructions sheet.

Box Dimensions:
 3 1/4" W x 3 3/4" L x 3 7/8" D
 [83mm W x 95mm L x 98mm D]
Device Plate:
 4 7/8" W x 5 1/16" L
 [124mm W x 129mm L]

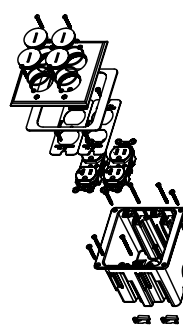
WMFB1DRN Single-Gang Floor Box Assembly



Includes single-gang box, one 15A, 125V tamper-resistant receptacle and nickel cover with two screw plugs. For hole cut dimensions, see installation instructions sheet.

Box Dimensions:
 2 1/8" W x 3 3/4" L x 3 7/8" D
 [54mm W x 95mm L x 98mm D]
Device Plate:
 3 1/8" W x 4 15/16" L
 [79mm W x 125mm L]

WMFB2DR2N Dual-Gang Floor Box Assembly



Includes dual-gang box, two 15A tamper-resistant duplex receptacles and nickel cover with four screw plugs. For hole cut dimensions, see installation instructions sheet.

Box Dimensions:
 3 1/4" W x 3 3/4" L x 3 7/8" D
 [83mm W x 95mm L x 98mm D]
Device Plate:
 4 7/8" W x 5 1/16" L
 [124mm W x 129mm L]