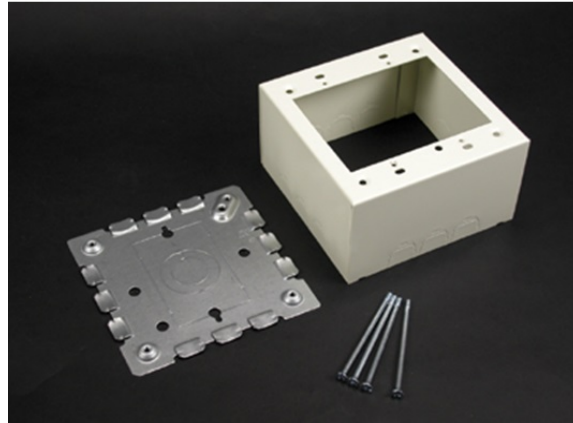


## 500/700 Two-Gang Extra Deep Switch & Receptacle Box Fitting

V5744-2, 5744-2WH, VC5744-2,  
5744-2WHC



For deep devices such as momentary contact, remote control switches, and hospital signaling system devices. Base has 1/2" trade size KOs. Larger gang boxes available by special order. Two-gang: 4 3/4" L x 4 3/4" W [121mm x 121mm]. Accepts NEMA double-gang standard faceplates. NOTE: Certified to Canadian Safety Standards for sale in Canada. When ordering these products, change the "V" color prefix to "vc" or the "WH" color suffix to "WHC" to denote the Canadian versions.

### features & benefits

### specifications

#### General Info

Available Colors:

V5744-2- Ivory  
5744-2WH - White

Product Series: 500, 700  
Component Type: Boxes

#### Technical Information

Material: Steel  
Capacity: Single-Channel