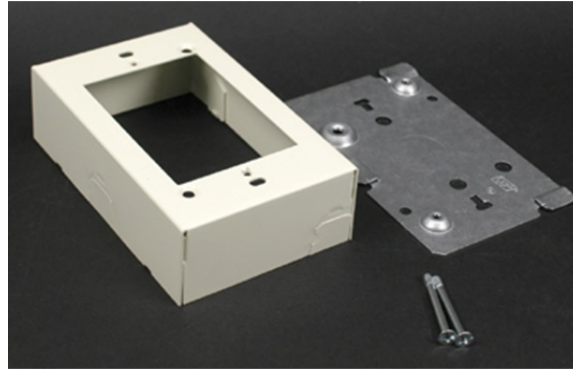


500/700 Switch & Receptacle Box Fitting

V5741, 5741WH, VC5741,
5741WHC



For shallow type switches (three-way, single, and double pole) and receptacles, including three-wire HICKing receptacles and single-gang combination devices. Base has 1/2" trade size Kos. Position of twistouts on ends permits running raceways close to interior trim. Accepts NEMA single-gang standard faceplates. NOTE: Certified to Canadian Safety Standards for sale in Canada. When ordering these products, change the "V" color prefix to "vc" or the "WH" color suffix to "WHC" to denote the Canadian versions.

features & benefits

specifications

General Info

Available Colors:

V5741- Ivory

5741WH - White

Product Series: 500, 700

Component Type: Boxes

Technical Information

Material: Steel

Capacity: Single-Channel