

For Commercial & Residential Applications

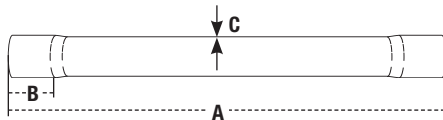
Job Name _____
 Job Location _____
 Engineer _____
 Approval _____

Contractor _____
 Approval _____
 Contractor's P.O. No. _____
 Representative _____

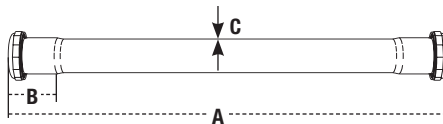
Metal Extension Tubes



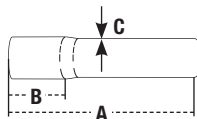
Double End Solder



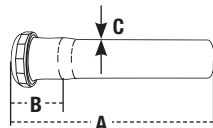
Double Slip Joint



Solder



Slip joint



MODEL	✓TO SUBMIT	DESCRIPTION	DIMENSIONS						FINISH
			A		B		C		
			in.	mm.	in.	mm.			
Double End Solder Type									
758 503		1 1/2" x 16"	16	406	2	51	22 GA.		Chrome
Double Slip Joint Type									
759 253		1 1/4" x 16"	16	406	2	51	22 GA.		Chrome
759 503		1 1/2" x 16"	16	406	2	51	22 GA.		Chrome
Solder									
710 223		1 1/4" x 6"	6	152	2	51	22 GA.		Chrome
711 223		1 1/4" x 8"	8	203	2	51	22 GA.		Chrome
713 221		1 1/4" x 12"	12	305	2	51	22 GA.		Rough Brass
713 223		1 1/4" x 12"	12	305	2	51	22 GA.		Chrome
714 221		1 1/2" x 6"	6	152	2	51	22 GA.		Rough Brass
714 223		1 1/2" x 6"	6	152	2	51	22 GA.		Chrome
715 221		1 1/2" x 8"	8	203	2	51	22 GA.		Rough Brass
715 223		1 1/2" x 8"	8	203	2	51	22 GA.		Chrome
717 221		1 1/2" x 12"	12	305	2	51	22 GA.		Rough Brass
717 223		1 1/2" x 12"	12	305	2	51	22 GA.		Chrome
710 203		1 1/4" x 6"	6	152	2	51	20 GA.		Chrome
711 203		1 1/4" x 8"	8	203	2	51	20 GA.		Chrome
713 203		1 1/4" x 12"	12	305	2	51	20 GA.		Chrome
717 201		1 1/2" x 12"	12	305	2	51	20 GA.		Rough Brass
717 203		1 1/2" x 12"	12	305	2	51	20 GA.		Chrome
717 171		1 1/2" x 12"	12	305	2	51	17 GA.		Rough Brass
717 173		1 1/2" x 12"	12	305	2	51	17 GA.		Chrome
Slip Joint									
713 32PB		1 1/4" x 12"	12	305	2	51	22 GA.		Polished Brass
710 323		1 1/4" x 6"	6	152	2	51	22 GA.		Chrome
711 323		1 1/4" x 8"	8	203	2	51	22 GA.		Chrome
713 321		1 1/4" x 12"	12	305	2	51	22 GA.		Rough Brass
713 323		1 1/4" x 12"	12	305	2	51	22 GA.		Chrome
714 323		1 1/2" x 6"	6	152	2	51	22 GA.		Chrome
715 321		1 1/2" x 8"	8	203	2	51	22 GA.		Rough Brass
715 323		1 1/2" x 8"	8	203	2	51	22 GA.		Chrome
717 321		1 1/2" x 12"	12	305	2	51	22 GA.		Rough Brass
717 323		1 1/2" x 12"	12	305	2	51	22 GA.		Chrome
710 303		1 1/4" x 6"	6	152	2	51	20 GA.		Chrome
711 303		1 1/4" x 8"	8	203	2	51	20 GA.		Chrome
713 303		1 1/4" x 12"	12	305	2	51	20 GA.		Chrome
714 303		1 1/2" x 6"	6	152	2	51	20 GA.		Chrome
715 303		1 1/2" x 8"	8	203	2	51	20 GA.		Chrome
717 303		1 1/2" x 12"	12	305	2	51	20 GA.		Chrome
710 373		1 1/4" x 6"	6	152	2	51	17 GA.		Chrome
711 373		1 1/4" x 8"	8	203	2	51	17 GA.		Chrome
713 373		1 1/4" x 12"	12	305	2	51	17 GA.		Chrome
714 373		1 1/2" x 6"	6	152	2	51	17 GA.		Chrome
715 373		1 1/2" x 8"	8	203	2	51	17 GA.		Chrome
717 373		1 1/2" x 12"	12	305	2	51	17 GA.		Chrome

Watts product specifications in U.S. customary units and metric are approximate and are provided for reference only. For precise measurements, please contact Watts Technical Service. Watts reserves the right to change or modify product design, construction, specifications, or materials without prior notice and without incurring any obligation to make such changes and modifications on Watts products previously or subsequently sold.



Brass & Tubular Products

USA: 815 Chestnut St., No. Andover, MA 01845-6098; www.watts.com
 Canada: 5435 North Service Rd., Burlington, ONT. L7L 5H7; www.wattscanada.ca
 ES-WB&T-Mtl-ExtTbs 0752

© Watts Regulator Company, 2007