

For Light Commercial and Residential Applications

Job Name _____

Contractor _____

Job Location _____

Approval _____

Engineer _____

Contractor's P.O. No. _____

Approval _____

Representative _____

LEAD FREE*

Series LF7R Dual Check Valves

LF7R Sizes: ½" – 1" (15 – 25mm)

Series LF7R Dual Check Valves are designed for non-health hazard residential water system containment and continuous pressure applications, such as the drinking water supply service entrance or individual outlets. Series LF7R uses two compact replaceable check modules and is installed immediately downstream of the residential water meter. The LF7R features Lead Free* construction to comply with Lead Free* installation requirements.

Features

- Can be installed vertically or horizontally
- Available with combination of inlet/outlet sizes, types or thread and end connection

Specifications

The dual check backflow preventer shall meet the domestic requirements of ANSI/ASSE Standard 1024, and bear the seal of approval. It shall be Lead Free* cast copper silicon alloy bodied and include not less than one union. An identification tag indicating direction of flow shall be securely attached to the valve body. The Lead Free* Dual Check Valve shall comply with state codes and standards, where applicable, requiring reduced lead content. The dual check shall be Watts Series LF7R. (Please select the model best suited to your application.)

Pressure - Temperature

Temperature Range: 33°F – 180°F (0.5°C-82°C) continuous

Maximum Working Pressure: 175psi (12.07 bar)

Approvals



LF7R

Series LF7R: Inlet/Outlet Connections – Types available, ordering code, sizes available.

| CONNECTION TYPE | CONNECTION CODE | SIZES AVAILABLE | |
|------------------------------|-----------------|-----------------|------------|
| | | in. | mm |
| National Pipe Thread Female | 2 | ½, ¾, 1 | 15, 20, 25 |
| National Pipe Thread Male | 3 | ½, ¾, 1 | 15, 20, 25 |
| Female Meter Thread | 4 | 1 | 25 |
| Female Meter Thread (Swivel) | 10 | ¾, 1 | 20, 25 |

Union (U) Connections available on all inlet/outlet types and sizes.

When ordering Series LF7R Valves with Meter Thread Connections, be sure to order connection size one size larger than meter thread. Examples:

| Meter Size | Order |
|-----------------------|-----------|
| ⅝" (16mm) x ½" (15mm) | ¾" (20mm) |
| ⅝" (16mm) x ¾" (20mm) | 1" (25mm) |
| ¾" (20mm) x ¾" (20mm) | 1" (25mm) |

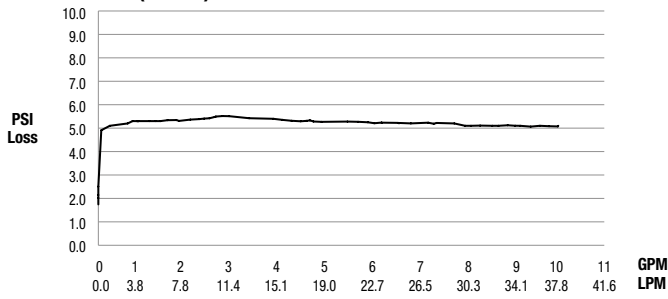
NOTICE

The information contained herein is not intended to replace the full product installation and safety information available or the experience of a trained product installer. You are required to thoroughly read all installation instructions and product safety information before beginning the installation of this product.

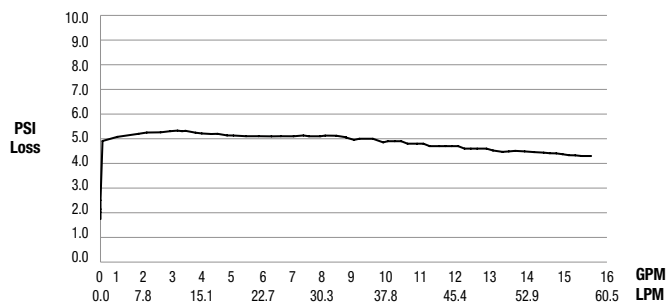
*The wetted surface of this product contacted by consumable water contains less than 0.25% of lead by weight.

Capacity

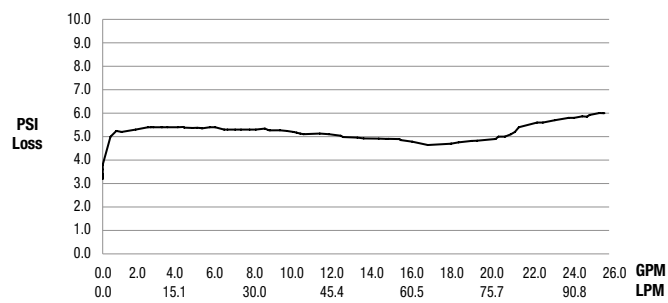
1/2" (15mm) LF7R



3/4" (20mm) LF7R



1" (25mm) LF7R



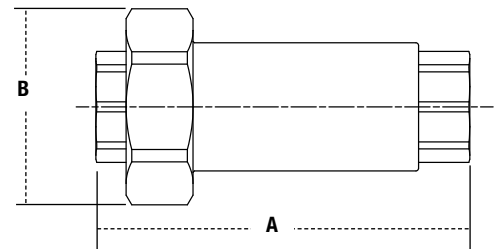
Materials

- Body: Lead Free* copper silicon alloy
- Check Modules: Engineered composite
- Discs: Santoprene
- Seals: EPDM
- Springs: Stainless steel

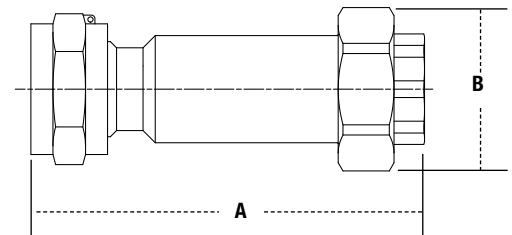
Dimensions - Weight

| MODEL | SIZE (DN) | | DIMENSIONS | | | | WEIGHT | |
|------------|-----------|----|------------|-----|-------|----|--------|------|
| | in. | mm | A | | B | | lbs. | kgs. |
| LF7RU2-2 | 1/2 | 15 | 3 5/8 | 92 | 1 7/8 | 48 | .7 | .32 |
| | 3/4 | 20 | 3 5/8 | 92 | 1 7/8 | 48 | .7 | .32 |
| | 1 | 25 | 3 7/8 | 99 | 1 7/8 | 48 | .8 | .36 |
| LF7RU2-U2 | 3/4 | 20 | 3 11/16 | 93 | 1 7/8 | 48 | .9 | .41 |
| LF7RU10-U2 | 1 | 25 | 4 1/2 | 114 | 1 7/8 | 48 | 1.7 | .77 |
| LF7RU10-U3 | 1 | 25 | 4 13/16 | 122 | 1 7/8 | 48 | 1.7 | .77 |

LF7RU2-U2



LF7RU10-U2



A Watts Water Technologies Company

USA: Tel: (978) 689-6066 • Fax: (978) 975-8350 • Watts.com

Canada: Tel: (905) 332-4090 • Fax: (905) 332-7068 • Watts.ca

Latin America: Tel: (52) 81-1001-8600 • Fax: (52) 81-8000-7091 • Watts.com