

Bronze Ball Valve (Metal Handle) Model 2970.10

Description

- Two Piece Bronze Body
- Full Port
- EPDM Sealing Elements
- EPDM Stem Seals
- Lockable Metal Handle
- ProPress Ends

Features

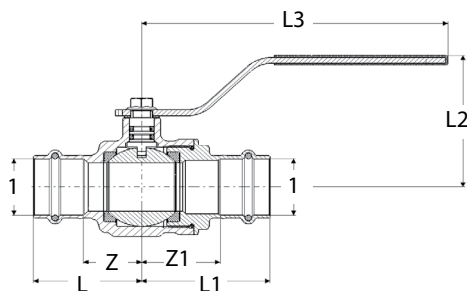
- Blowout-proof Stem
- Reinforced PTFE Seats
- Smart Connect Feature

Ratings

- 600 WOG
- Temperature Range 0°F-250°F
- Max. Operating Pressure: 200 psi

Approvals

- CSA ½" - 1"
- Conforms to MSS SP-110
- UPC
- NSF 61



Stock Code	Size	Z (in)	Z1 (in)	L (in)	L1 (in)	L2 (in)	L3 (in)
	1						
22053	½"	0.83	1.02	1.58	1.77	2.44	5.55
22058	¾"	0.87	1.14	1.77	2.05	2.52	5.55
22063	1"	1.06	1.42	1.97	2.33	2.68	5.55
22068	1¼"	1.19	1.45	2.22	2.47	3.09	6.10
22073	1½"	1.39	1.39	2.81	2.80	3.34	6.10
22078	2"	1.77	1.83	3.35	3.41	3.65	6.10

Viega... The global leader in plumbing, heating and pipe joining systems

301 N. Main, 9th Floor • Wichita, KS 67202 • Ph: 800-976-9819 • Fax: 316-425-7618 • www.viega.com