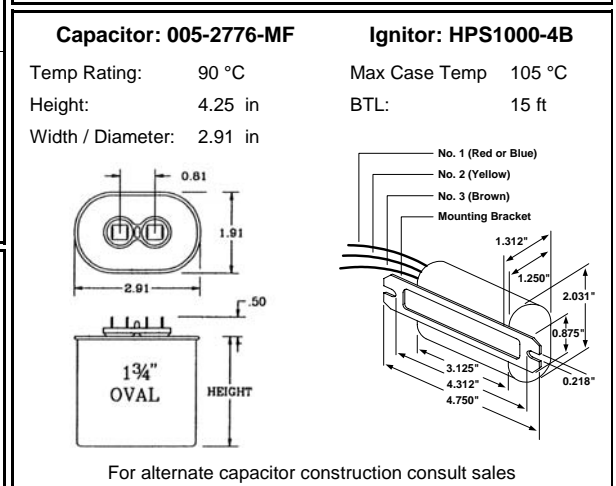
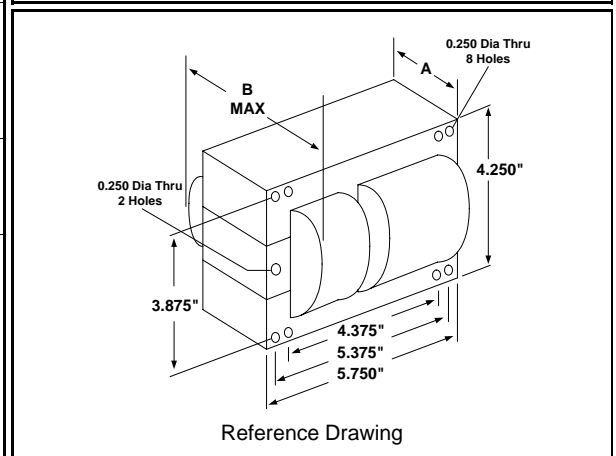
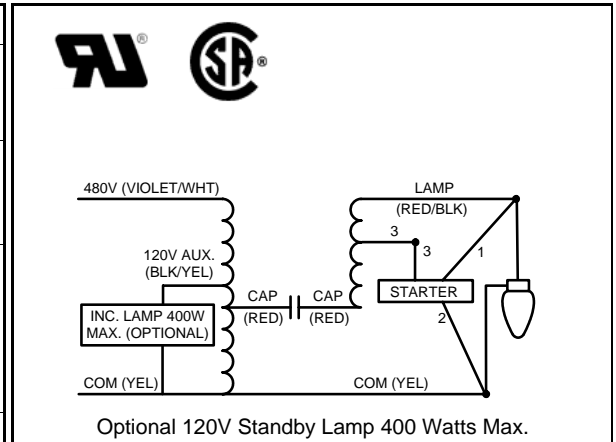


Specification Sheet

Input Volts	480				
Regulation					
Line Volts	±10%				
Lamp Watts	±10%				
Power Factor (min)	90%				
Input Watts	1100 W				
NOM. Open Circuit Voltage	440 V				
Line Current (Amps)					
Operating	2.45				
Open Circuit	1.50				
Starting	1.80				
Recommended Fuse (Amps)	8				
Lamp Dropout Voltage (Line)	360 V				
UL Temperature Ratings					
Insulation Class	H (180°C)				
Temperature Code	D				
MIN. Starting Temperature	-40°F -40°C				
CAPACITOR Specifications					
Microfarads	26 uf				
Volts (min.)	525 V				
60Hz Test Procedures					
High Potential Test 1 Minute	2000 V				
High Potential Test 1 Second	2500 V				
Secondary Open Ckt Voltage (V)	400 - 485				
Secondary Current Shorted (A)	6.00 - 7.65				
Input Operating Current (A)	2.15 - 2.70				
Input Open Circuit Current (A)	0.75 - 2.15				
Input Short Circuit Current (A)	1.25 - 2.20				
Core and Coil Specifications					
Dimension A	3.80 in				
Dimension B	5.70 in				
Weight	25 lbs				
Lead Lengths (inches)	12-14				
Coil Material (Pri. / Sec.):	Cu / Cu				



Document #:	010-9762-03
Date:	6/14/2011
Status:	Production
Replaces Catalog #:	1232-571S

Data is based upon tests performed by Universal Lighting Technologies in a controlled environment and is representative of relative performance. Actual performance may vary depending on operating conditions. Specifications are subject to change without notice.