

**T&S BRASS AND BRONZE WORKS, INC.**  
 2 Saddleback Cove / P.O. Box 1088  
 Travelers Rest, SC 29690

Model No.  
**B-11K**

Item No.

Travelers Rest, SC: 800-476-4103 • Simi Valley, CA: 800-423-0150 • Fax: 864-834-3518 • www.tsbrass.com

This Space for Architect/Engineer Approval

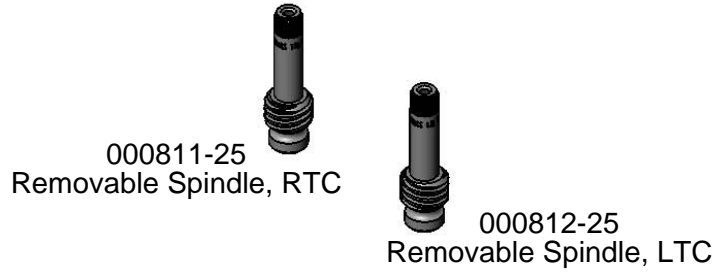
Job Name \_\_\_\_\_ Date \_\_\_\_\_

Model Specified \_\_\_\_\_ Quantity \_\_\_\_\_

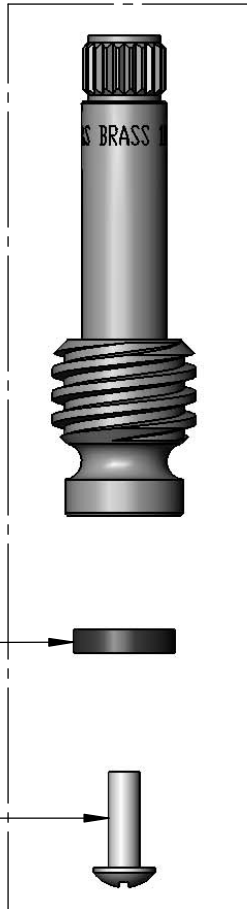
Customer/Wholesaler \_\_\_\_\_

Contractor \_\_\_\_\_

Architect/Engineer \_\_\_\_\_



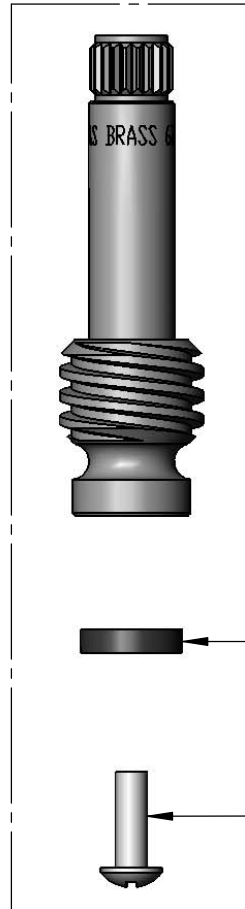
000811-25  
Removable Spindle, RTC  
Qty = 1 ea.



009841-45  
Seat Washer

000933-45  
Screw

000812-25  
Removable Spindle, LTC  
Qty = 1 ea.



009841-45  
Seat Washer

000933-45  
Screw

Product Specifications:  
 Replacement Parts Kit For Eterna Spindles (RTC & LTC)

Drawn  
**DHL**

Checked  
**DMH**

Approved  
**JHB**

Scale:  
**1:1**

Date:  
**12/20/12**