

Automatic Air Vents

Taco automatic air vents have been the industry standard for over 30 years. No matter the application, Taco has the size and style vent to provide unmatched reliable service. Attached to the boiler or used throughout the system, Taco vents automatically purge unwanted air from any hydronic installation, allowing the system to run more efficiently.



417 Coin Vent

Installed on water or steam radiators the Taco automatic coin vent is the ideal air purging device. The coin vent features special hygroscopic cellulose discs in the valve body. When dry the discs allow air to be released from the system. Once all the air is purged the discs would then come in contact with system water, where upon they would swell to create a positive shut-off. This continuous cycle prevents the radiators from becoming air bound and speeds the process of filling the system. The vent can also be manually shut-off by means of an internal ball check. The 417 coin vent is suitable for use in water and low pressure steam applications.

Hy-Vent®

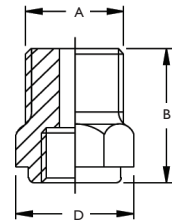
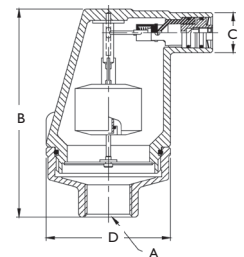
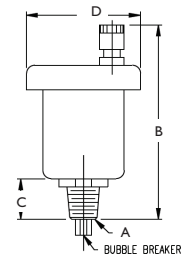
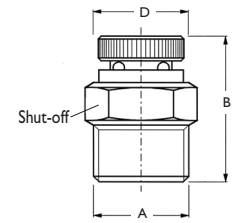
The Taco Hy-Vent® has become the industry standard for dependable long life service. Available in 1/8", 1/4" and 1/2" x 3/4" threaded connections, the high capacity float style vents can be placed either on the boiler or at the high points throughout the system. Now with operating pressure ratings of up to 250 psi, the brass body, nickel plated vents meet the system requirements of even the largest installation. The vents are also easily serviceable if needed, by just unscrewing the vent cap.

409 Vent

The Taco 409 air vent is a heavy duty brass vent rated to 150 psi system operating pressure. The conical shape of the vent significantly increases the clearance between the water level and internal mechanisms, reducing the potential that dirt floating on the top of the water could foul the venting operation. It features a convenient outlet connection for a 3/4" ID flex tube waste connection. It's high capacity design makes it ideal for placement throughout commercial systems.

Hy-Vent® Waste Connector

The Hy-Vent® Waste Connector screws onto the outlet connection of the Hy-Vents (models 400, 426, 418, 416) to provide a worry-free installation. The 1/4" threads easily connect to a waste line, preventing water damage if the vent ever leaks.



Dimensions

| Product Number | Description | A | B | C | D | Bubble Breaker | Quantity Per Box | Max. System Conditions | Max. Venting Pressure |
|----------------|---------------------------------|-----------------|----------|--------|----------|----------------|------------------|------------------------|-----------------------|
| 417 | Taco-Vent® Coin Vent | 1/8" NPT | 1" | ---- | 35/64" | No | 12 | 125 psi, 240°F * | 125 psi |
| 400 | Hy-Vent® | 1/8" NPT | 3 3/16" | 13/32" | 1 13/16" | Yes | 1 | 150 psi, 240°F | 50 psi |
| 416 | Slim-Line Hy-Vent® | 1/8" NPT | 3 1/8" | 13/32" | 1 1/2" | Yes | 14 | 150 psi, 240°F | 115 psi |
| 426 | Hy-Vent® | 1/4" NPT | 3 3/16" | 13/32" | 1 13/16" | Yes | 1 | 150 psi, 240°F | 50 psi |
| 418 | Hy-Vent® | 1/2" x 3/4" NPT | 3 11/32" | 17/32" | 1 13/16" | No | 1 | 150 psi, 240°F | 50 psi |
| 419 | High Pressure Hy-Vent® | 1/2" x 3/4" NPT | 3 1/2" | 17/32" | 1 13/16" | No | 1 | 250 psi, 240°F | 150 psi |
| 409 | Commercially Rated Brass Vent** | 3/4" NPT | 4 3/4" | ** | 2 13/16" | No | 1 | 150 psi, 240°F | 150 psi |
| 414 | Waste Connector | 1/4" NPT | 3/4" | ---- | 5/8" | ---- | 1 | 150 psi, 240°F | ---- |

* Suitable for use in low pressure steam systems.

** Outlet connection fits 3/4" ID Flex tubing.

