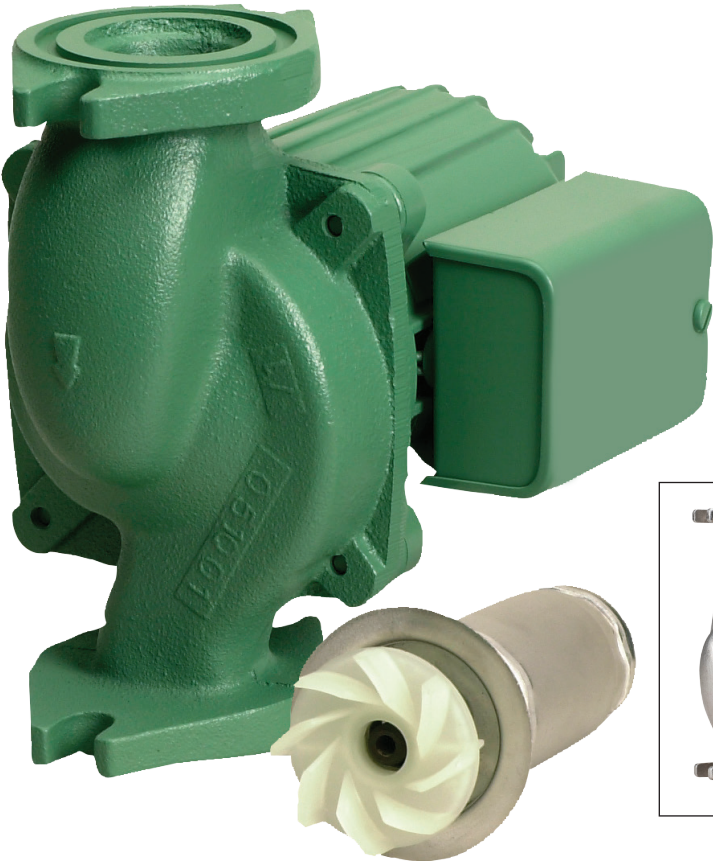


## Model 0010 Cartridge Circulator

The High Velocity series Taco 0010 Cartridge circulator is designed for quiet, efficient operation in residential or light commercial applications for hydronic heating, chilled water cooling and potable hot water systems. Its unique field-serviceable cartridge contains all moving parts. Replacing the cartridge rebuilds the circulator. With no mechanical seal, the self-lubricating, maintenance free design provides unmatched reliability. Compact and lightweight, with excellent performance characteristics, the 0010 is ideal for installations where space is a premium. Available in Cast Iron or Stainless Steel construction.



Low-Lead  
Compliant



# Submittal Data Information Model 0010 Cartridge Circulator

Submittal Data # 101-033  
Supersedes: 06/27/07

Effective: 06/03/13

## Features

- Standard high capacity output - Compact design
- Quiet, efficient operation
- Direct drive - Low power consumption
- Unique Replaceable Cartridge design (Field serviceable)
- Self Lubricating
- No mechanical seal
- Unmatched reliability - Maintenance free
- Universal flange to flange dimensions
- Cast Iron or Stainless Steel construction

## Materials of Construction

Casing (Volute):..... Cast Iron or Stainless Steel  
Stator Housing:..... Aluminum  
Cartridge:..... Stainless Steel  
Impeller:..... Non-metallic  
Shaft:..... Ceramic  
Bearings..... Carbon  
O-Ring & Gaskets: .... EPDM

## Model Nomenclature

F – Cast Iron, Flanged  
SF – Stainless Steel, Flanged

## Performance Data

Max. Flow: 32 GPM  
Max. Head: 10 Feet  
Min. Fluid Temperature: 40°F (4°C)  
Max. Fluid Temperature: 230°F (110°C)  
Max. Working Pressure: 125 psi  
Connection Sizes: 3/4", 1", 1-1/4", 1-1/2" Flanged

## Certifications & Listings

 **UL US LISTED FOR INDOOR USE ONLY**

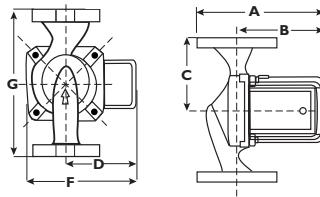
 **NSF Low-Lead Compliant**  
Certified to NSF/ANSI 372

## Application

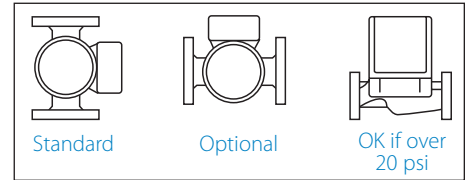
The Taco 0010 is designed for a wide range of large residential or light commercial water circulating applications. Typical uses include hydronic heating, radiant heating, primary-secondary loops, indirect water heaters, chilled water cooling, and potable hot water systems. The Stainless Steel 0010 is designed for all open-loop, fresh water systems. The unique replaceable cartridge contains all of the moving parts and allows for easy service, instead of replacing the entire circulator. Compact, direct-drive, low power consumption design makes it ideal for high-efficiency jobs.

## Pump Dimensions & Weights

Models	Casing	A		B		C		D		F		G		Ship Wt.	
		in.	mm	in.	mm	in.	mm	in.	mm	in.	mm	in.	mm	lbs.	Kg
0010-F3	Cast Iron	7-1/4	184	5-5/16	135	3-3/16	81	3-15/16	84	5-3/8	137	6-3/8	162	10	4.5
0010-SF3	St. Steel	7-1/4	184	5-5/16	135	3-3/16	81	3-15/16	84	5-1/8	137	6-3/8	162	9	4



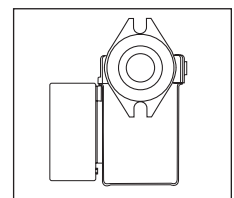
## Mounting Positions



## Electrical Data

Model	Volts	Hz	Ph	Amps	RPM	HP
0010-F3	115	60	1	1.10	3250	1/8
0010-SF3	115	60	1	1.17	3250	1/8
Motor Type	Permanent Split Capacitor Impedance Protected					
Motor Options	220/50/1, 220/60/1, 230/60/1, 100/110/50/60/1					

## Flange Orientation



## Performance Field - 60Hz

