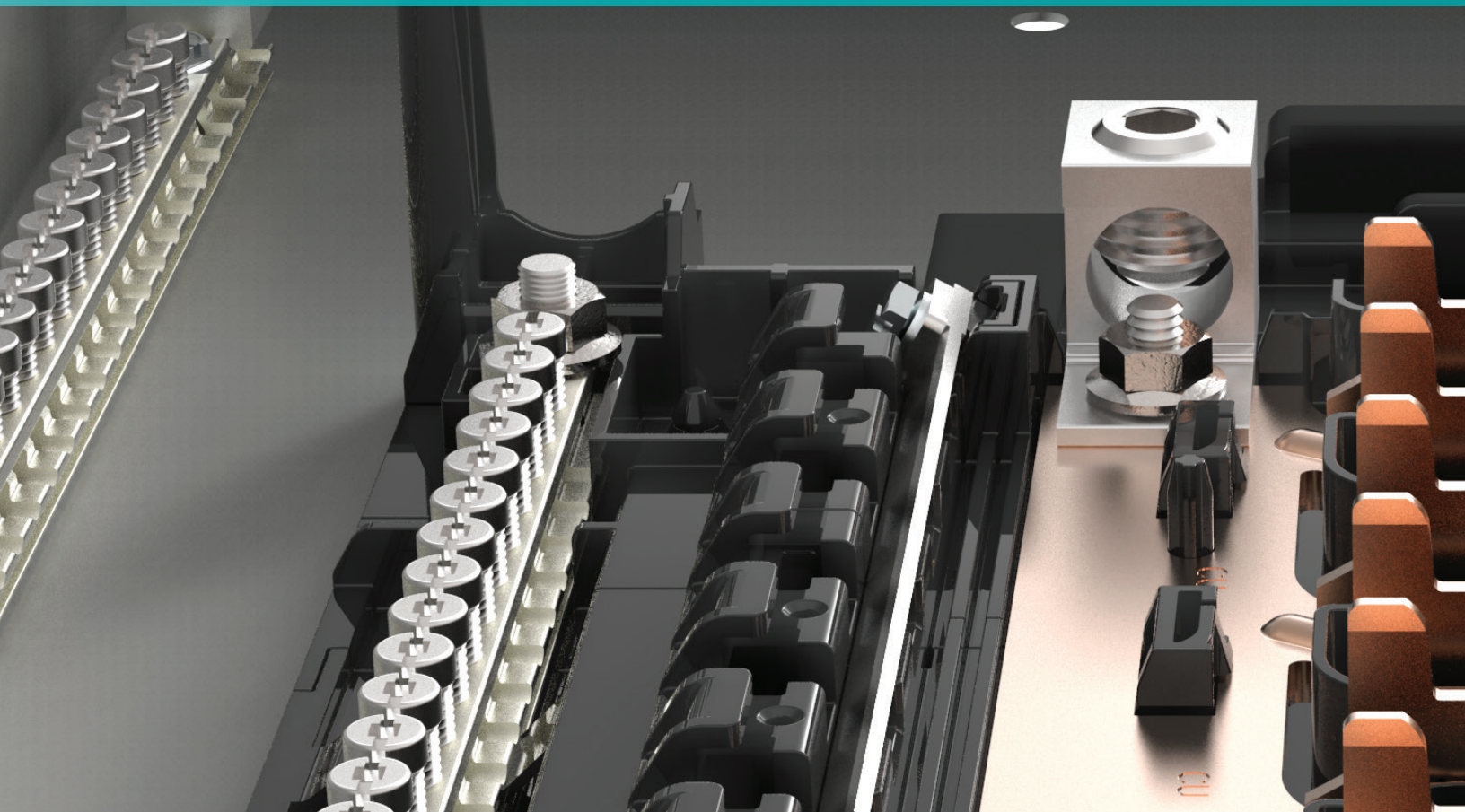


You have come to know Siemens solutions for their durability, innovation, and safety attributes. This continues with the plug-on neutral load center with electronic breakers to provide a more secure connection resulting in a more confident installation.



Simple

Spacious

Secure

- Quicker breaker installation
- Wiring made easier with the neutral lug removed on CAFCI breakers
- Same great features as PL and ES load centers

- Small electronic breaker footprint
- Design allows for neutral terminal accessibility
- Over 4 inches of wire bending space

- Same reliable installation method
- Neutral clip is the same as line side
- Durable hook-rail

A Siemens Advantage

SN Series 1-phase Main Breaker Plug-On Neutral Load Centers ^⑤

1-phase, 3-wire, 120/240 Volts AC

Main Breaker Load Centers ^①
100-225 Amperes

Aluminum Bus
60/75°C Rated

Amp Rating	No. of Spaces	No. of Circuits	Indoor Enclosure - NEMA Type 1		Outdoor Enclosure - NEMA Type 3R	
			Catalog Number	Enclosure Height (inches) ^②	Catalog Number	Enclosure Height (inches) ^③
100	12	24	SN1224B1100	18	SNW1224B1100	21
100	16	32	SN1632B1100	21	SNW1632B1100	23
100	20	20	SN2020B1100	21	SNW2020B1100	27
100	20	40	SN2040B1100	21	–	–
100	24	48	SN2448B1100	24	–	–
100	30	30	SN3030B1100	26	–	–
100	30	48	SN3048B1100	26	–	–
125	12	24	–	–	SNW1224B1125	21
125	16	32	SN1632B1125	21	–	–
125	20	40	–	–	SNW2040B1125	27
125	24	24	SN2424B1125	24	SNW2424B1125	27
125	30	30	SN3030B1125	26	–	–
125	30	48	SN3048B1125	26	SNW3048B1125	29
150	16	32	SN1632B1150	24	–	–
150	20	40	SN2040B1150	24	SNW2040B1150	27
150	24	48	SN2448B1150	26	–	–
150	30	30	SN3030B1150	30	–	–
150	30	48	SN3048B1150	30	SNW3048B1150	35
200	40	40	–	–	SNW4040B1150	38
200	8	16	–	–	SNW0816B1200T ^④	23
200	12	24	–	–	SNW1224B1200	23
200	16	32	SN1632B1200	24	–	–
200	20	40	SN2040B1200	26	SNW2040B1200	27
200	24	48	SN2448B1200	30	–	–
200	30	48	SN3048B1200	30	SNW3048B1200	35
200	40	40	SN4040B1200	36	SNW4040B1200	38
200	40	60	SN4060B1200	36	–	–
200	42	64	SN4264B1200	39	–	–
200	54	82	SN5482B1200	42	–	–
225	42	64	SN4264B1225	39	SNW4264B1225	38
225	54	82	SN5482B1225	43	–	–

① Factory installed 22KAIC main breaker. Suitable for use as service equipment.

② Indoor enclosures are 14 1/4" wide by 3 7/8" deep.

③ Outdoor enclosures are 14 1/2" wide by 4 1/4" deep.

④ Feed-thru lugs.

⑤ Available (made to order) in white by adding "W" to the end of the catalog number.