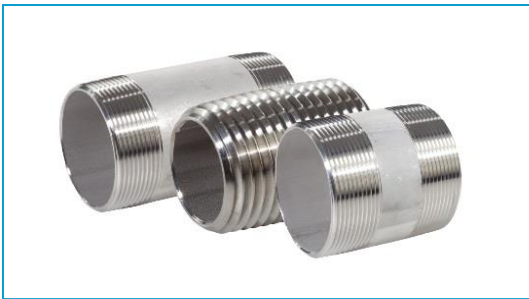


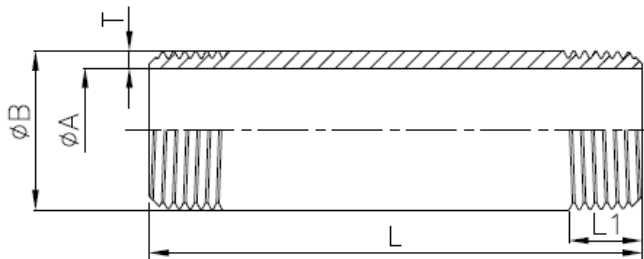
# Stainless Steel Nipples • Spec Sheet



Material Test Reports Available

## FEATURES & BENEFITS

- Stainless Steel 316
- Schedule 40
- Material Test Reports (MTR'S) Available
- Stainless Steel Conforms to ASTM A312
- Dimensions & Ends Conform to ASTM A733
- Threads Conform to ASTM B1.20.1
- RoHS Compliant



## DIMENSIONS

PART #	SIZE	A	B	L	L1	T	PART #	SIZE	A	B	L	L1	T
SSN00CL	1/8 x CL	0.27	0.41	0.75	0.32	0.07	SSN044	3/4 x 4	0.82	1.05	4.00	0.65	0.11
SSN01CL	1/4 x CL	0.36	0.54	0.88	0.48	0.09	SSN04512	3/4 x 5-1/2	0.82	1.05	5.50	0.65	0.11
SSN01112	1/4 x 1-1/2	0.36	0.54	1.50	0.48	0.09	SSN046	3/4 x 6	0.82	1.05	6.00	0.65	0.11
SSN012	1/4 x 2	0.36	0.54	2.00	0.48	0.09	SSN05CL	1 x CL	1.05	1.32	1.50	0.81	0.13
SSN01212	1/4 x 2-1/2	0.36	0.54	2.50	0.48	0.09	SSN052	1 x 2	1.05	1.32	2.00	0.81	0.13
SSN013	1/4 x 3	0.36	0.54	3.00	0.48	0.09	SSN053	1 x 3	1.05	1.32	3.00	0.81	0.13
SSN014	1/4 x 4	0.36	0.54	4.00	0.48	0.09	SSN054	1 x 4	1.05	1.32	4.00	0.81	0.13
SSN02CL	3/8 x CL	0.49	0.68	1.00	0.49	0.09	SSN056	1 x 6	1.05	1.32	6.00	0.81	0.13
SSN02112	3/8 x 1-1/2	0.49	0.68	1.50	0.49	0.09	SSN06CL	1-1/4 x CL	1.38	1.66	1.63	0.84	0.14
SSN022	3/8 x 2	0.49	0.68	2.00	0.49	0.09	SSN064	1-1/4 x 4	1.38	1.66	4.00	0.84	0.14
SSN02212	3/8 x 2-1/2	0.49	0.68	2.50	0.49	0.09	SSN07CL	1-1/2 x CL	1.61	1.90	1.75	0.85	0.14
SSN023	3/8 x 3	0.49	0.68	3.00	0.49	0.09	SSN072	1-1/2 x 2	1.61	1.90	2.00	0.85	0.14
SSN025	3/8 x 5	0.49	0.68	5.00	0.49	0.09	SSN07212	1-1/2 x 2-1/2	1.61	1.90	2.50	0.85	0.14
SSN02512	3/8 x 5-1/2	0.49	0.68	5.50	0.49	0.09	SSN074	1-1/2 x 4	1.61	1.90	4.00	0.85	0.14
SSN026	3/8 x 6	0.49	0.68	6.00	0.49	0.09	SSN076	1-1/2 x 6	1.61	1.90	6.00	0.85	0.14
SSN03CL	1/2 x CL	0.62	0.84	1.13	0.64	0.11	SSN08CL	2 x CL	2.07	2.38	2.00	0.89	0.15
SSN03112	1/2 x 1-1/2	0.62	0.84	1.50	0.64	0.11	SSN08212	2 x 2-1/2	2.07	2.38	2.50	0.89	0.15
SSN032	1/2 x 2	0.62	0.84	2.00	0.64	0.11	SSN083	2 x 3	2.07	2.38	3.00	0.89	0.15
SSN033	1/2 x 3	0.62	0.84	3.00	0.64	0.11	SSN084	2 x 4	2.07	2.38	4.00	0.89	0.15
SSN034	1/2 x 4	0.62	0.84	4.00	0.64	0.11	SSN085	2 x 5	2.07	2.38	5.00	0.89	0.15
SSN036	1/2 x 6	0.62	0.84	6.00	0.64	0.11	SSN08512	2 x 5-1/2	2.07	2.38	5.50	0.89	0.15
SSN04CL	3/4 x CL	0.82	1.05	1.38	0.65	0.11	SSN086	2 x 6	2.07	2.38	6.00	0.89	0.15
SSN04112	3/4 x 1-1/2	0.82	1.05	1.50	0.65	0.11	SSN10CL	3 x CL	3.07	3.50	2.63	1.39	0.22
SSN042	3/4 x 2	0.82	1.05	2.00	0.65	0.11	SSN104	3 x 4	3.07	3.50	4.00	1.39	0.22
SSN04212	3/4 x 2-1/2	0.82	1.05	2.50	0.65	0.11	SSN106	3 x 6	3.07	3.50	6.00	1.39	0.22