

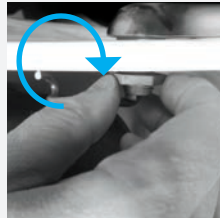
For left or right flush handle toilets with  
 a Flushmate 503 Series System

**Prior to Installation:**

Before removing existing handle, take note of its orientation. The new handle should be installed in the same direction. You may be required to remove flush rod, clips and screws. Please note that the existing and new locking nut provided are left-hand thread (clockwise to loosen and counterclockwise to tighten, as indicated with arrows throughout instructions).

**Tools Needed:** No. 2 Phillips screwdriver

**1** Remove existing handle.



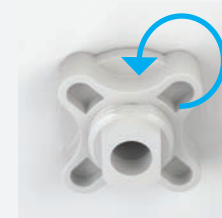
Loosen nut to remove existing handle. Pliers may be needed.

**2** Orient and insert bushing.



Use black spacer in larger openings.

**3** Hand tighten locknut, then insert handle.

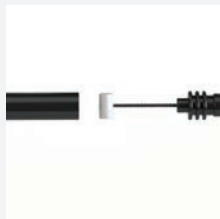


First, tighten locknut snug around bushing.



Insert handle stem past bushing.

**4** Insert cable and seat barrel into lever catch.



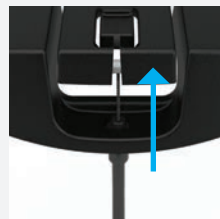
Gently remove and discard cap.



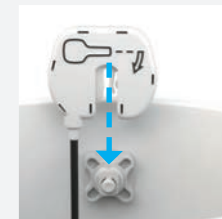
Push cable up under frame.



Position cable in slot.



**5** Install crank housing over protruding stem.



Match handle icon to direction of actual handle.



Push down onto stem until it stops/clicks.

**6** Secure frame with cable facing front.



**7** Adjust actuator and align lever.



Loosen set screw. Rotate actuator to align top edges of lever and frame, then tighten set screw.

**Installation complete**

For additional questions or product support, please visit: [www.flushmate.com](http://www.flushmate.com).



This symbol indicates parts that make an audible sound when locked into proper position.