

FLASHING DRAIN ADAPTER

863 Series

SPECIFICATION:

Sioux Chief 863 Series PVC, ABS or cast iron flashing drain adapter. Adapter shall include a removable PVC or ductile iron flashing collar with slotted bolt holes. Adapter shall have female threaded brass inserts for bolt connections and a trap primer port for optional tapping. Adapter shall be designed with a full open throat and large sump area to provide complete and thorough drainage. Adapter shall have a solvent weld hub connection in PVC or ABS, and push-joint or no-hub connection in cast iron.

Item Number Submitted:

863-_____

MATERIALS:

ADAPTER BODY: PVC, ABS, Cast Iron
FLASHING COLLAR: PVC, Ductile Iron

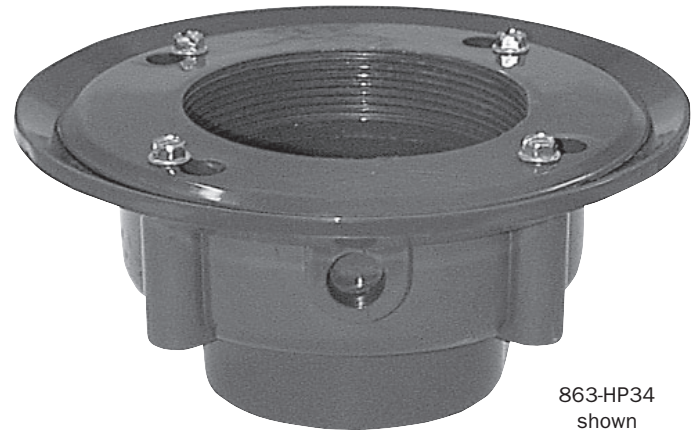
CONNECTION TYPE:

Sch. 40 hub, solvent weld. Conforms to ASTM D2665
Cast Iron No-Hub

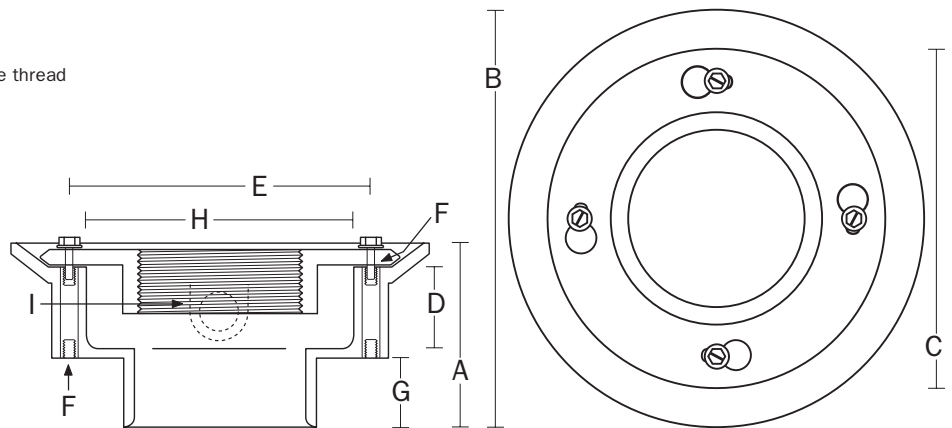
DIMENSIONS:

- Overall height* A: 3 3/4"
- Overall Diameter B: 8 1/2"
- Collar Diameter C: 7 3/8"
- Sump Depth D: 1 3/4"
- Screw Centers E: 6 1/8"
- Brass Inserts F: 1/4 x 20 female thread
- Hub Depth* G: 1 3/8"
- Sump Diameter H: 5 1/2"
- Trap Primer Port I: For 1/2" FIP

* Add 1/4" for Push-Joint connection



863-HP34 shown



863-HP23 863-HP33 863-HP34
863-HP44 863-HA23 863-HA33
863-HA34 863-HA44 models only

Create Item Number Below

863-ABCD

e.g. 863-HC234 = Cast iron adapter body, ductile iron collar, 3" Sch. 40 No-Hub connection, 4" collar threadway, tapped/plugged trap primer port

A Adapter Body/Flashing Collar

- HP** = Grey PVC adapter body with PVC flashing collar
- HA** = Black ABS adapter body with PVC flashing collar
- HC2** = Cast Iron No-Hub adapter body with ductile iron flashing collar

B Connection Size

- 2** = 2" Sch. 40¹
 - 3** = 3" Sch. 40¹
 - 4** = 4" Sch. 40¹
- ¹ ABS & PVC models are Sch. 40 hub
Cast iron No-hub models are Sch. 40 pipe size

C Collar Threadway

- 3** = 3" FIPS Threads
 - 4** = 4" FIPS Threads¹
- ¹ 4" Threadway is not available on adapters with 2" connection

D Trap Primer Port

- I** = Tapped 1/2" FIP¹
 - *** = Untapped¹
- * Untapped ABS/PVC adapter is standard - no letter code necessary
¹ Cast iron adapter bodies are factory tapped and plugged
Cast iron adapter bodies CANNOT be ordered untapped.