

# PUSH-JOINT FEMALE THREAD ADAPTER

858 Series

## SPECIFICATION:

Sioux Chief 858 Series cast iron FIP x Push-Joint adapter shall be used where necessary in drainage systems. Adapter shall connect to DWV system by means of a neoprene Push-joint gasket. Adapter shall have standard pattern FIP threads designed for use with any standard MIP thread drain or cleanout.

Item Number  
Submitted:

858-\_\_\_\_\_

## MATERIALS:

ADAPTER BODY: Cast Iron

PUSH-JOINT GASKET: Neoprene

## DIMENSIONS:

Top Diameter A:

2" adapter: 2 <sup>5</sup>/<sub>8</sub>"

3" adapter: 3 <sup>13</sup>/<sub>16</sub>"

4" adapter: 4 <sup>3</sup>/<sub>8</sub>"

Overall Height B:

2" adapter: 4 <sup>1</sup>/<sub>8</sub>"

3" adapter: 4 <sup>1</sup>/<sub>8</sub>"

4" adapter: 4 <sup>1</sup>/<sub>8</sub>"

Connection C:

2" adapter: 2" cast iron Push-Joint

3" adapter: 3" cast iron Push-Joint

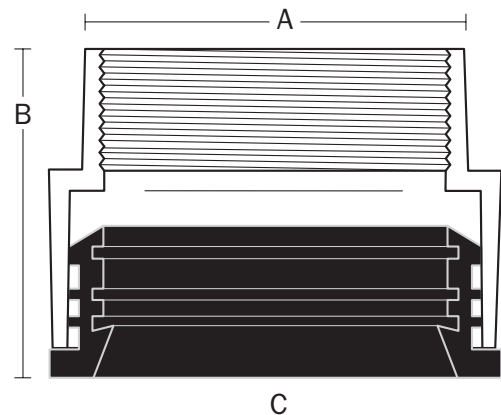
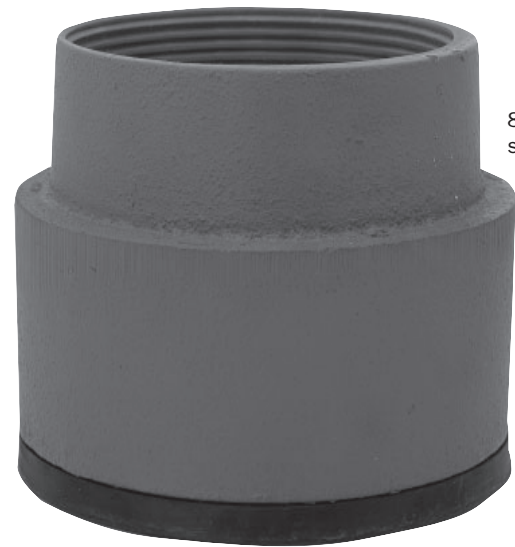
4" adapter: 4" cast iron Push-Joint

Threadway:

2" adapter: 2" FIP thread - standard pattern

3" adapter: 3" FIP thread - standard pattern

4" adapter: 4" FIP thread - standard pattern



## Create Item Number Below

# 858-A

e.g. 858-63L = 3" Cast iron FIP x Push-Joint adapter

### A Connection Size

**62L** = 2" cast iron Push-Joint

**63L** = 3" cast iron Push-Joint

**64L** = 4" cast iron Push-Joint