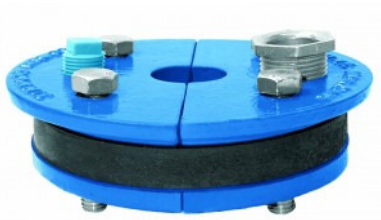


Well Seal – Split Top Plate



Well Seal – Single Drop Pipe – Split Top Plate – Submersible Pump

- Class 25 Non-toxic lead free painted cast iron
- Zinc plated steel bolts
- Single Hole
- 3/4" molded rubber, 50 durometer

Please note: 6 5/8", 10" and 12" cast iron well seals and all heavy duty cast iron well seals have been replaced by steel well seals.

Part No.	Well Size I.D.	Drop Pipe Size	Cable Hole Tapping	Vent Tapping	Weight	List Price
108	3	1	3/8	1/8	2.1	\$34.91
109	3	1 1/4	5/16**	1/8*	2.0	\$34.91
111	4	1	3/4	1/2	3.4	\$32.53
047	4	1 Offset	3/4	1/2	3.5	\$36.37
112	4	1 1/4 Offset	3/4	1/2	3.3	\$32.53
105***	4	1 1/4 Offset	3/4	1/2	3.3	\$32.53
113	4	1 1/2 Offset	3/4	1/2	2.9	\$33.35
114	4	2 Offset	1/2	1/2	2.7	\$33.35
116	4 1/4	1	3/4	1/2	3.6	\$32.53
117	4 1/4	1 1/4 Offset	3/4	1/2	3.5	\$32.53
118	4 1/4	1 1/2 Offset	3/4	1/2	3.1	\$33.35
119	4 1/4	2 Offset	1/2	1/2	2.8	\$33.35
165	4 1/2	1	3/4	1/2	3.8	\$47.50
166	4 1/2	1 1/4	3/4	1/2	3.7	\$47.50
167	4 1/2	1 1/2	3/4	1/2	3.5	\$47.50
121	5	1	1	1/2	5.6	\$49.83
Part No.	Well Size I.D.	Drop Pipe Size	Cable Hole Tapping	Vent Tapping	Weight	List Price
122	5	1 1/4	1	1/2	5.2	\$49.83
123	5	1 1/2	3/4	1/2	5.0	\$49.83
124	5	2	3/4	1/2	4.3	\$49.83
131	5 5/8	1	3/4	1/2	7.3	\$55.13
132	5 5/8	1 1/4	3/4	1/2	7.2	\$55.13
133	5 5/8	1 1/2	3/4	1/2	6.9	\$55.13
134	5 5/8	2	3/4	1/2	6.4	\$55.13
136	6	1	1	1/2	7.5	\$55.17
137	6	1 1/4	1	1/2	7.1	\$55.17
138	6	1 1/2	1	1/2	7.2	\$55.72
139	6	2	1	1/2	7.3	\$55.72
141	6 1/4	1	1	1/2	7.5	\$55.17
142	6 1/4	1 1/4	1	1/2	7.1	\$55.17
143	6 1/4	1 1/2	1	1/2	7.4	\$55.72
144	6 1/4	2	1	1/2	7.6	\$55.72
196	8	1	1	1/2	16.5	\$165.12
197	8	1 1/4	1	1/2	16.3	\$165.12
198	8	1 1/2	1	1/2	16.0	\$165.12
199	8	2	1	1/2	15.2	\$165.12
041	8	3	1	1/2	13.4	\$165.12
042	8	4	1	1/2	10.9	\$165.12

* One 1/8" Drilled hole – no threads

** Two 5/16" Drilled holes – no threads

*** Extra Offset