

Power Mod

Type WTB Standard Tapboxes

Standard Tapboxes

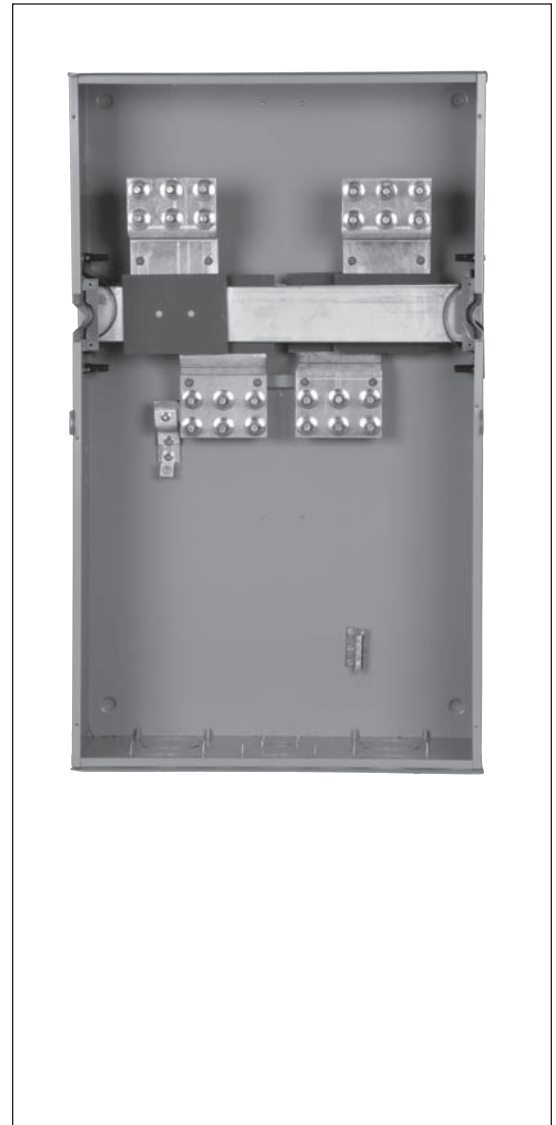
Standard tapbox modules (type WTB) are designed for versatility, space savings, and flexibility.

Features include:

- QuickSystem™ features
- Standard compression lug capability
- Invertibility: devices can be rotated to accommodate the desired incoming feed direction
- 750 kcmil AL wire options for most models
- 100K AIC standard for all models
- Broad ampacity ratings from 400 to 2400 Amps
- Line and load capability- service entrance and sub feed rated

Standard Tapbox quick reference

- 400-2400A
- 1200A thru-bus rating
- UL Standard # UL67
- UL file # E27100
- AIC rating (100K AIC)
- Voltage
 - Single phase 120/240V AC max
 - Three phase 240V AC max
- All swing latches and rivets are stainless steel.
- NEMA 3R rated
- G90 galvanized steel
- ANSI 61 paint
- Custom options available! Details on page 2-141



Restrictions for 1600-2400amp type WTB Power Mod Tap Boxes:



When the 1600, 2000, or 2400amp tap boxes are used as service entrance equipment (fed directly from utility transformer) or when the supply originates from a Class L fuse or Siemens WL circuit breaker there are restrictions on the use of an additional down-stream (thru-bus connected) WTB, WTB, WET, or WT type Power Mod tap boxes. In these instances a type "WXB" module must be used as protection for the downstream tap box. box (placed between the incoming WTB tap box and the downstream outgoing tap box). See page 2-69 for an example. This restriction does **NOT** apply if the tap box is fed from a Siemens Sentron or VL series molded case circuit breaker. Note that the maximum amperage for a Siemens Sentron circuit breaker is 2,000 amps.

Power Mod

• Revised •
02/18/14

Type WTB Standard Tapboxes

⚠ Restrictions for 1600-2400amp type WTB Power Mod Tap Boxes: ⚠





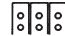


When the 1600, 2000, or 2400amp tap boxes are used as service entrance equipment (fed directly from utility transformer) or when the supply originates from a Class L fuse or Siemens WL circuit breaker there are restrictions on the use of an additional down-stream (thru-bus connected) WTBN, WTB, WET, or WT type Power Mod tap boxes. In these instances a type "WXB" module must be used as protection for the downstream tap box. box (placed between the incoming WTB tap box and the downstream outgoing tap box). See page 2-69 for an example. This restriction does **NOT** apply if the tap box is fed from a Siemens Sentron or VL series molded case circuit breaker. Note that the maximum amperage for a Siemens Sentron circuit breaker is 2,000amps.

Lugs not included. Refer to pages 2-139 to 2-140 for lug size options. NEMA II Stud Pattern lugs must be installed by user or utility.



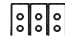
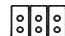





2
METER
CENTERS

Tap box modules: 1-phase, 3-wire WN, 120/240V AC^⑤

Catalog no. (100k AIC)	Ampere rating	Service feed ^④	Dimensions (inches) ^①			Line side connections ^② (lugs not included)	KO Diagram
			Height	Width	Depth		
WTB1400CU	400	OH/UG	40.13	12.22	13.19	1 set of 2 studs 	T-1
WTB1800CU	800	OH/UG	40.13	12.22	13.19	2 sets of 2 studs 	T-2
WTB11200CU	1200	OH/UG	47.13	15.61	13.31		T-3
WTB11600CU ^{③⑥}	1600	OH/UG	49.09	25.09	13.81	3 sets of 2 studs 	T-4
WTB12000TU ^⑥	2000	OH	67.94	35.00	14.78	3 sets of 2 studs 	T-5
WTB12000BU ^⑥		UG				3 sets of 2 studs 	
WTB12400TU ^⑥	2400	OH				3 sets of 2 studs 	
WTB12400BU ^⑥		UG				Optional 4 sets of 2 studs ^{⑦⑧} 	

Tap box modules: 3-phase, 4-wire SN, 240V AC Max.^⑤

Catalog number (100k AIC)	Ampere rating	Service feed ^④	Dimensions (inches) ^①			Line side connections ^② (lugs not included)	KO Diagram
			Height	Width	Depth		
WTB3400CU	400	OH/UG	40.13	12.22	13.19	1 set of 2 studs 	T-1
WTB3800CU	800	OH/UG	40.13	12.22	13.19	2 sets of 2 studs 	T-2
WTB31200CU	1200	OH/UG	60.31	15.61	17.75		T-3
WTB31600CU ^{③⑥}	1600	OH/UG	49.09	25.09	13.81	3 sets of 2 studs 	T-4
WTB32000TU ^⑥	2000	OH	67.94	35.00	14.78	3 sets of 2 studs 	T-5
WTB32000BU ^⑥		UG				3 sets of 2 studs 	
WTB32400TU ^⑥	2400	OH				3 sets of 2 studs 	
WTB32400BU ^⑥		UG				Optional 4 sets of 2 studs ^{⑦⑧} 	

Multi-family
Metering—WTB

① Dimensions shown are representative of outside box dimensions and do not include allowances for mounting bumps, endwalls, covers, hubs, or hardware protrusions. Dimensions are subject to change.
② Lugs not included. Refer to page 2-139-2-140 for lug size options. 750 conductor size available NEMA II stud

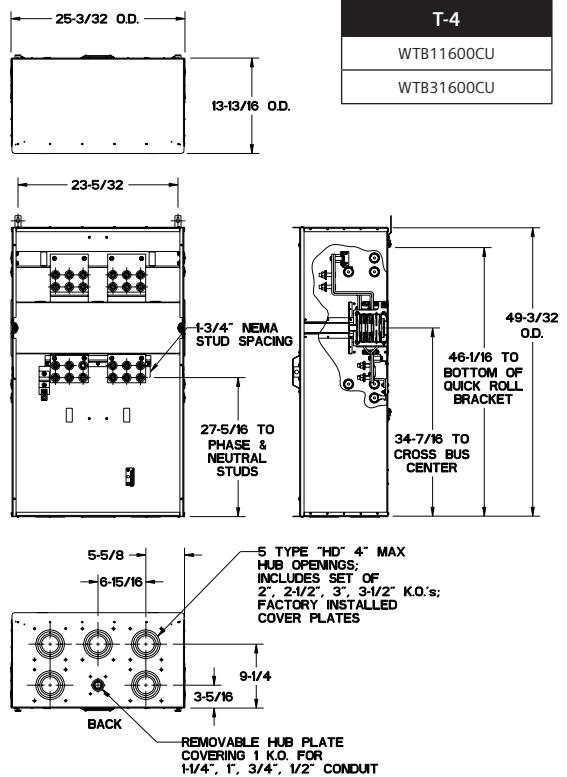
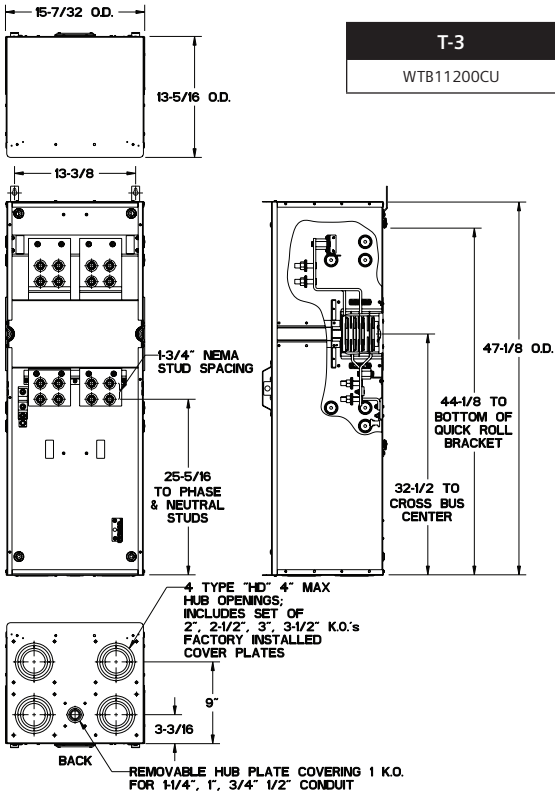
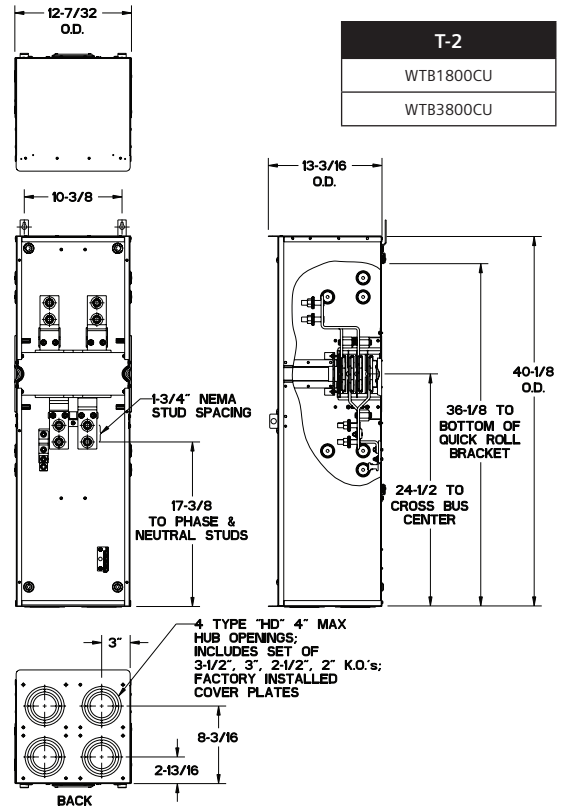
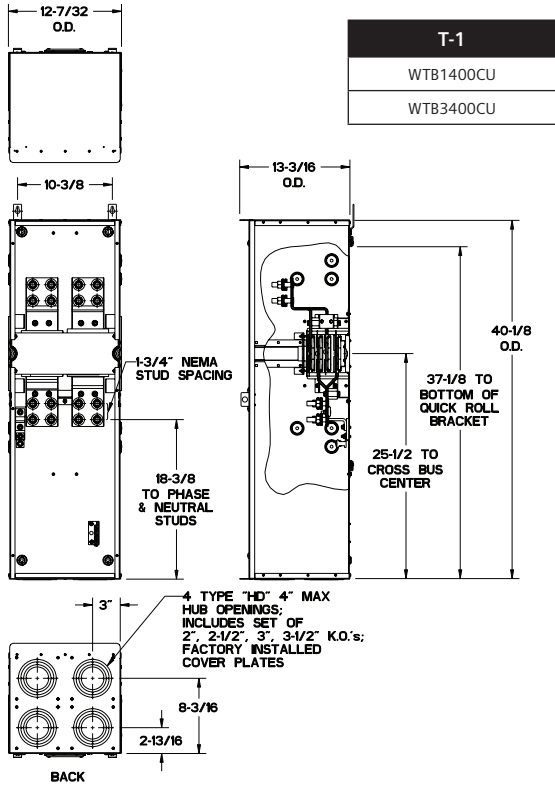
pattern compression lugs must be installed by user or utility.
③ 1200 amp maximum feed per side-must be used as a center fed main.
④ Module is invertible- rotate device to point hub openings to appropriate feed direction.

⑤ QuickConnect not included. If used for load side application an additional coupler must be ordered.
⑥ Please see restriction note above.
⑦ Please see lug kit number LK18500N2C on pages 2-139 - 2-140. For use with 500kcmil ONLY!
⑧ Fits 2400amp models ONLY!

Power Mod

Type WTB Standard Tapboxes: Knockout Diagrams

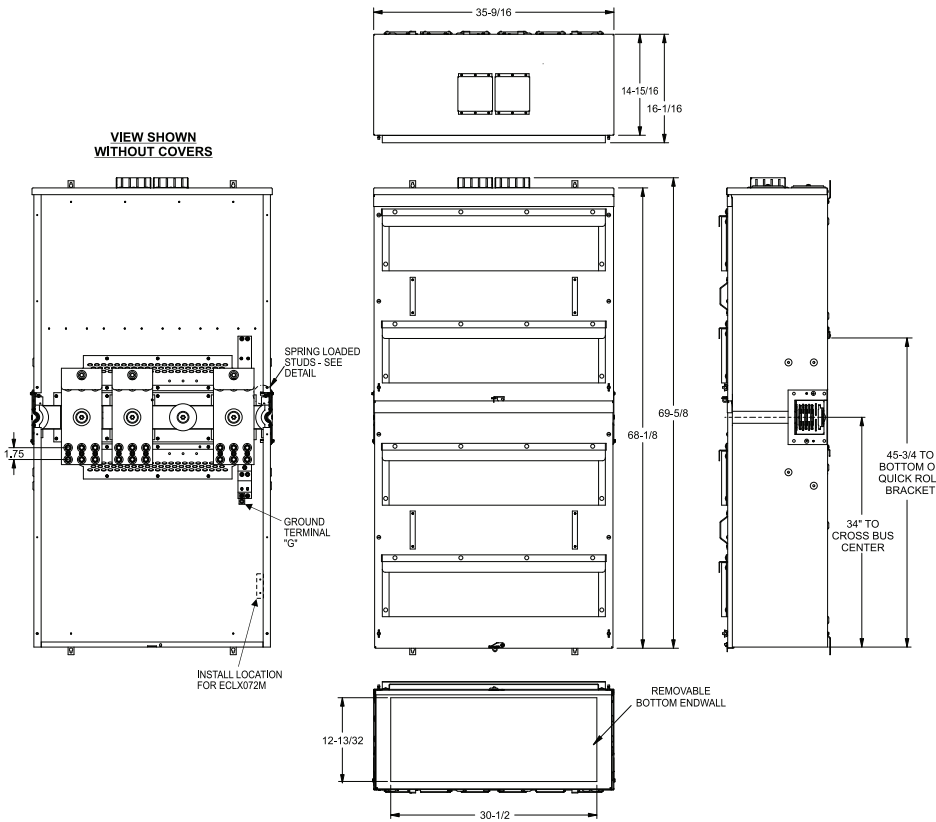
METER CENTERS 2



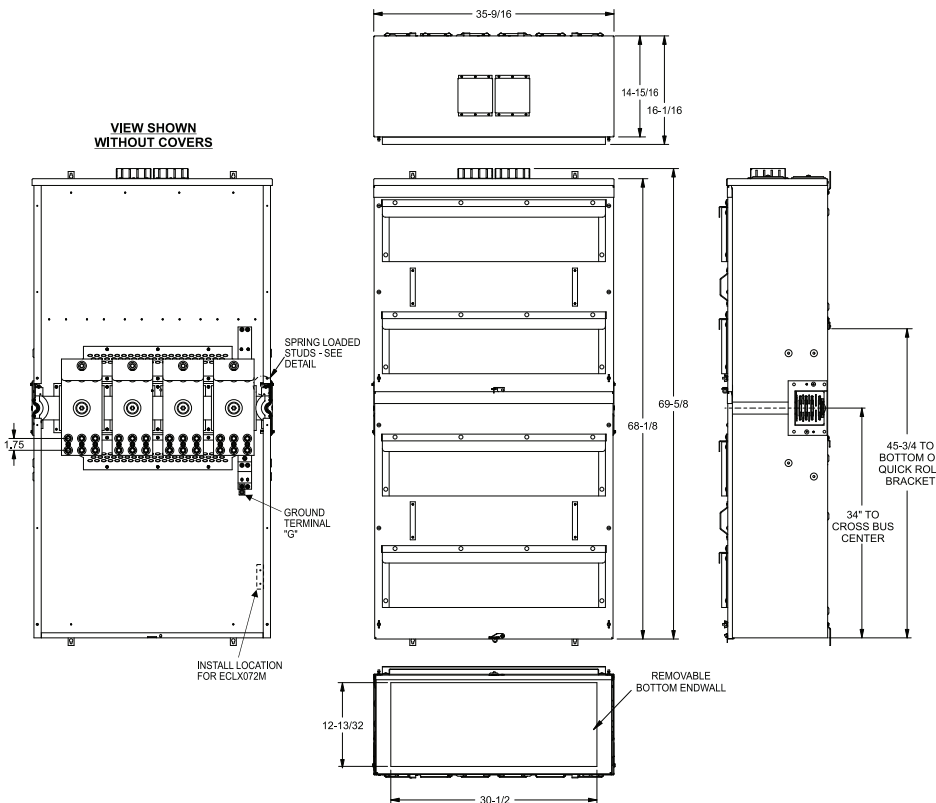
Multi-family Metering—WTB

Power Mod

Type WTB Standard Tapboxes: Knockout Diagrams



T-5
WTB12000TU
WTB12000BU
WTB12400TU
WTB12400BU



T-6
WTB32000TU
WTB32000BU
WTB32400TU
WTB32400BU