

Load Centers

Load Center Accessories^①

• Revised •
01/22/13

1
LOAD CENTERS &
CIRCUIT BREAKERS

| Catalog Number | Description | Pack Qty |
|----------------|-------------|----------|
|----------------|-------------|----------|

Ground Bar Kits (For ES and PL Load Centers)

| | | |
|-----------|---|---|
| EC1GB8 | GROUND BAR KIT-8 POS | 1 |
| EC1GB82 | GROUND BAR KIT-8 POS, 2/0 LUG | 1 |
| EC2GB12 | GROUND BAR KIT-12 POS | 1 |
| EC2GB122 | GROUND BAR KIT-12 POS, 2/0 LUG | 1 |
| EC2GB15 | GROUND BAR KIT-15 POS | 1 |
| EC2GB152 | GROUND BAR KIT-15 POS, 2/0 LUG | 1 |
| EC3GB21 | GROUND BAR KIT-21 POS | 1 |
| EC3GB212 | GROUND BAR KIT-21 POS, 2/0 LUG | 1 |
| EC3GB27 | GROUND BAR KIT-27 POS | 1 |
| EC3GB272 | GROUND BAR KIT-27 POS, 2/0 LUG | 1 |
| EC3GB30 | GROUND BAR KIT-30 POS | 1 |
| EC3GB302 | GROUND BAR KIT-30 POS, 2/0 LUG | 1 |
| EC3GB352 | GROUND BAR KIT-35 POS, 2/0 LUG | 1 |
| EC3GB352G | GROUND BAR KIT-35 POS, 2/0 LUG ^② | 1 |

Ground Bar Kits (For Legacy Load Centers)

| | | |
|-----------|---------------------------------|---|
| ECGB5 | GROUND BAR KIT-5 POS | 1 |
| ECGB10 | GROUND BAR KIT-10 POS | 1 |
| ECGB101 | GROUND BAR KIT-10 POS, 1/0 LUG | 1 |
| ECGB14 | GROUND BAR KIT-14 POS | 1 |
| ECGB141 | GROUND BAR KIT-14 POS, 1/0 LUG | 1 |
| ECGB142 | GROUND BAR KIT-14 POS, 2/0 LUG | 1 |
| ECGB20 | GROUND BAR KIT-20 POS | 1 |
| ECGB201 | GROUND BAR KIT-20 POS, 1/0 LUG | 1 |
| ECGB202 | GROUND BAR KIT-20 POS, 2/0 LUG | 1 |
| ECINSGB5 | INSULATED GROUND BAR KIT-5 POS | 1 |
| ECINSGB14 | INSULATED GROUND BAR KIT-14 POS | 1 |
| ECINSGB20 | INSULATED GROUND BAR KIT-20 POS | 1 |

Hubs

| | | |
|---------|-----------------------|---|
| ECHS000 | HS TYPE CLOSURE PLATE | 1 |
| ECHS075 | HS TYPE HUB - 3/4" | 1 |
| ECHS100 | HS TYPE HUB - 1" | 1 |
| ECHS125 | HS TYPE HUB - 1 1/4" | 1 |
| ECHS150 | HS TYPE HUB - 1 1/2" | 1 |
| ECHS200 | HS TYPE HUB - 2" | 1 |
| ECHS250 | HS TYPE HUB - 2 1/2" | 1 |
| ECHA000 | HA TYPE CLOSURE PLATE | 1 |
| ECHA075 | HA TYPE HUB - 3/4' | 1 |
| ECHA100 | HA TYPE HUB - 1" | 1 |
| ECHA125 | HA TYPE HUB - 1 1/4" | 1 |
| ECHA150 | HA TYPE HUB - 1 1/2" | 1 |
| ECHV000 | HV TYPE CLOSURE PLATE | 1 |
| ECHV200 | HV TYPE HUB - 2" | 1 |
| ECHV250 | HV TYPE HUB - 2.5" | 1 |
| ECHV300 | HV TYPE HUB - 3" | 1 |
| ECHV350 | HV TYPE HUB - 3.5" | 1 |
| ECHV400 | HV TYPE HUB - 4" | 1 |

Lock Kits

| | | |
|--------|--|---|
| ECQFL2 | FLUSH LOCK KIT FOR ULT., PL, ES, 3PH 100A-225A | 1 |
| ECQFL1 | FLUSH LOCK KIT-REPLACEMENT FOR EQ LC | 1 |
| ECQFL3 | ADD-A-LOCK (FLUSH LOCK) FOR 300-400A LC | 1 |

| Catalog Number | Description | Pack Qty |
|----------------|-------------|----------|
|----------------|-------------|----------|

Load Center Conversion Kits

| | | |
|-----------|---------------------------------------|---|
| MBK100A | MAIN BREAKER KIT 100-125A 1PH 22K | 1 |
| MBK125A | MAIN BREAKER KIT 125A 1PH 22K | 1 |
| MBK150A | MAIN BREAKER KIT 150A-225A 1PH 22K | 1 |
| MBK200A | MAIN BREAKER KIT 200A-225A 1PH 22K | 1 |
| MBK225A | MAIN BREAKER KIT 225A 1PH 22K | 1 |
| MBK3100 | MAIN BREAKER KIT 100A 3PH QP 240V 10K | 1 |
| MBK3125 | MAIN BREAKER KIT 125A 3PH QP 240V 10K | 1 |
| MBK3150 | MAIN BREAKER KIT 150A 3PH 240V 10K | 1 |
| MBK3175 | MAIN BREAKER KIT 175A 3PH 240V 10K | 1 |
| MBK3200 | MAIN BREAKER KIT 200A 3PH 240V 10K | 1 |
| MBK3225 | MAIN BREAKER KIT 225A 3PH 240V 10K | 1 |
| MBK3125H | MAIN BREAKER KIT 125A 3PH 240V 22K | 1 |
| MBK3150H | MAIN BREAKER KIT 150A 3PH 240V 22K | 1 |
| MBK3175H | MAIN BREAKER KIT 175A 3PH 240V 22K | 1 |
| MBK3200H | MAIN BREAKER KIT 200A 3PH 240V 22K | 1 |
| MBK3225H | MAIN BREAKER KIT 225A 3PH 240V 22K | 1 |
| MBK3125HH | MAIN BREAKER KIT 125A 3PH 240V 42K | 1 |
| MBK3150HH | MAIN BREAKER KIT 150A 3PH 240V 42K | 1 |
| MBK3175HH | MAIN BREAKER KIT 175A 3PH 240V 42K | 1 |
| MBK3200HH | MAIN BREAKER KIT 200A 3PH 240V 42K | 1 |
| MBK3225HH | MAIN BREAKER KIT 225A 3PH 240V 42K | 1 |
| ECMLK125 | 1 PH MAIN LUG CONVERSION KIT 100-125A | 1 |
| ECMLK225 | 1 PH MAIN LUG CONVERSION KIT 150-225A | 1 |
| ECMLK3125 | 3 PH MAIN LUG CONVERSION KIT 100-125A | 1 |
| ECMLK3225 | 3 PH MAIN LUG CONVERSION KIT 150-225A | 1 |

Lug Kits

| | | |
|----------|---|---|
| ECCS1 | COLLAR STRAP FOR GRD BARS #14-1/0 | 1 |
| ECCS2 | COLLAR STRAP FOR GRD BARS #6-250 | 1 |
| ECLKB1 | NEUTRAL LUG KIT WITH BOND TAB | 1 |
| ECLK3 | NEUTRAL LUG KIT #1-300 FOR EQIII LC | 1 |
| ECLK1-2 | NEURTAL LUG KIT #2 TO 1/0 FOR EQIII LC | 1 |
| ECLK2 | NEUTRAL LUG KIT #4-2/0 FOR EQIII LC, PL, ES | 1 |
| ECLK2SC | 2/0 LUG FOR 125AMP NEUTRAL FEEDER | 1 |
| ECLK2125 | 125A SUB FEED LUGS-USES 2 SPACES | 1 |
| ECLK2225 | 150A-225A SUB FEED LUGS-USES 4 SPACES | 1 |
| ECLK3225 | 3P SUB FEED LUGS-USES 6 SPACES | 1 |
| ECRLK250 | RISER LUG KIT 250 KCMIL | 3 |

Miscellaneous Load Center Accessories

| | | |
|---------------|---|-----|
| ECCP1 | PKG OF 100 CIRCUIT DIRECTORY | 100 |
| ECQF3 | QP/BQ/ED2 FILLER PLATE | 5 |
| ECMBF125 | 1 PH 100&125A MAIN BREAKER FILLER PLATE | 1 |
| EC3PMFP1 | 3 POLE MAIN FILLER PLATE | 1 |
| ECSMK1 | SURFACE MOUNT 1/4" SPACE KIT FOR LC'S | 4 |
| ECTS2 | LC TRIM SCREWS | 6 |
| ECTS2W | LC TRIM SCREWS WHITE | 6 |
| ECLCHINGE | GREY LC HINGES | 100 |
| ECADHLCDIRLBL | ADHESIVE LC DIRECTORY LABELS | 100 |
| ECSIELATCH | SIEMENS LC LATCHES | 25 |
| ECBONDSCRW | LC BOND SCREW | 10 |
| ECSN1 | SCREWS & NUTS FOR HC HUB-BOTTOM USE | 4 |
| RAG24 | RISER AUX GUTTER 24" | 1 |
| ECAFL | ARC FLASH LABEL | 10 |

Neutral Bar Kits

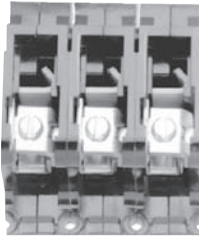
| | | |
|---------|---------------------------------------|---|
| ECLNB14 | MLO NEUTRAL BAR KIT-14 POS | 1 |
| ECLNB16 | CONVERTIBLE LC NEUTRAL BAR KIT-16 POS | 1 |

① The pack quantity is the number that is sold in a pack. Items listed on this page must be ordered in multiples of pack quantities but items are priced per each. For example, ECRLK250 come 3 to a pack so must be ordered in multiples of 3 but pricing would be individual unit price times 3.

② Bar has green-colored screws.

Load Centers

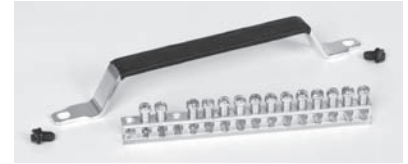
Load Center Accessories



Lug Kit, 3-Pole, Subfeed or
Feed thru Applications
ECLK3225



3-Pole Main Breaker Kit
MBK3200



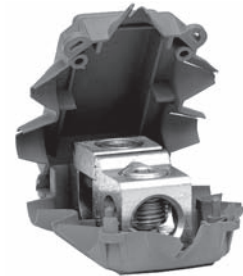
Neutral Bar Kit
ECLNB14



Main Breaker Retainer Kit for EQ
Load Centers
ECMBR1



Main Breaker Retainer kit for
Ultimate, ES, & PL Load Centers
ECMBR2



Riser Lug Kit
ECRLK250



Ground Bar Kit, **EC2GB15**



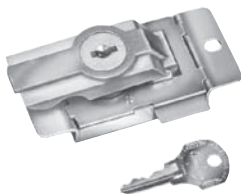
Neutral Lug Kit, **ECLK1-2**
wire range — #2-1 AWG
Cu or Al



Neutral Lug Kit, **ECLK3**
wire range — #1-300 MCM
Neutral Lug Kit, **ECLK2**
wire range — #4-#2/0 AWG
Cu or Al



For use on Ground Bar only
Collar Strap, Wire Range;
ECCS1; ECCS2



Add-A-Lock
(Flush Lock) **ECQFL1**
For EQ load centers



Filler Plate, **ECQF3**



Add-A-Lock
(Flush Lock), **ECQFL2**
for Ultimate, ES & PL Load
Centers and 3-phase up to 225A



Add-A-Lock
(Flush Lock), **ECQFL3**
300-400A Load Centers