

Selection Information

MH-T Duplex Breakers, (2) 1-Poles 10k AIC Interrupting Rating

Ampere Rating	Complete Breaker Unenclosed	Wire Range	
	Catalog Number	Cu	Al
15-15	MP1515 ^①	#14 - #8	#12 - #8
15-20	MP1520	#14 - #8	#12 - #8
20-20	MP2020 ^①	#14 - #8	#12 - #8
20-30	MP2030	#14 - #6	#12 - #6
30-30	MP3030	#14 - #6	#12 - #6

SHIPPING: 12 per carton, 48 per master carton (Wt. 20 lbs.)

MH-T Triplex Breakers, (1) 2-Pole & (2) 1-Poles,^② Common Trip 10k AIC Interrupting Rating

Ampere Rating	Complete Breaker Unenclosed	Wire Range	
	Catalog Number	Cu	Al
15-15	MP21515	#14 - #8	#12 - #8
15-20	MP22015	#14 - #8	#12 - #8
15-30	MP23015	#14 - #6	#12 - #6
15-40	MP24015	#8 - #6	#8 - #4
15-50	MP25015	#8 - #6	#8 - #4
20-20	MP22020	#14 - #8	#12 - #8
20-30	MP23020	#14 - #6	#12 - #6
20-40	MP24020	#8 - #6	#8 - #4
20-50	MP25020	#8 - #6	#8 - #4

SHIPPING: 6 per carton, 24 per master carton (Wt. 20 lbs.)

① For Non-CTL version, add "N" to catalog number.

② The 1-pole circuit breakers are always 15 or 20 amp.

Example: The MP24015 is (1) 2-pole, 40 amp and (2) 1-pole, 15 amp.

MH-T Quadplex Breakers, (2) 2-Poles, Non-Common Trip 10k AIC Interrupting Rating

Ampere Rating	Complete Breaker Unenclosed	Wire Range	
	Catalog Number	Cu	Al
15-15	MP215215	#14 - #8	#12 - #8
20-20	MP220220	#14 - #8	#12 - #8
30-20	MP220230	#14 - #6	#12 - #6
40-20	MP220240	#8 - #6	#8 - #4
30-30	MP230230	#14 - #6	#12 - #6
40-30	MP230240	#8 - #6	#8 - #4
40-40	MP240240	#8 - #6	#8 - #4
30-50	MP250230	#8 - #6	#8 - #4

SHIPPING: 6 per carton, 24 per master carton (Wt. 20 lbs.)

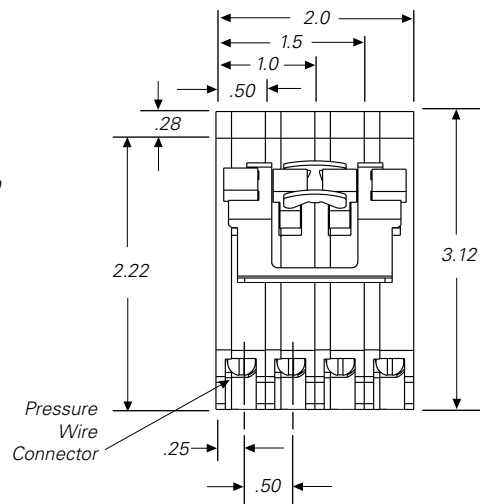
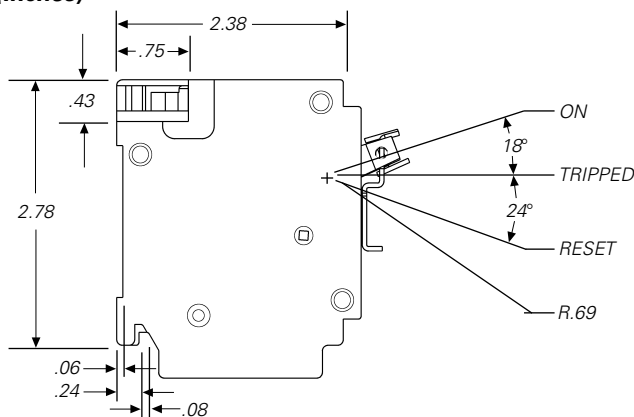
MH-T Quadplex Breakers, (2) 2-Poles, Common Trip 10k AIC Interrupting Rating

Ampere Rating	Complete Breaker Unenclosed	Wire Range	
	Catalog Number	Cu	Al
15-15	MP215215CT2	#14 - #8	#12 - #8
20-20	MP220220CT2	#14 - #8	#12 - #8
30-20	MP220230CT2	#14 - #6	#12 - #6
40-20	MP220240CT2	#8 - #6	#8 - #4
30-30	MP230230CT2	#14 - #6	#12 - #6
40-30	MP230240CT2	#8 - #6	#8 - #4
40-40	MP240240CT2	#8 - #6	#8 - #4
30-50	MP250230CT2	#8 - #6	#8 - #4

SHIPPING: 6 per carton, 24 per master carton (Wt. 20 lbs.)

Knockout Diagrams

Triplex/Quadplex (Duplex would be same profile, but 1" wide) Dimensions (Inches)



Murray Electrical Products

Siemens Energy & Automation, Inc.
Residential Products
5400 Triangle Parkway
Norcross, GA 30092
1-800-548-6405
www.sea.siemens.com