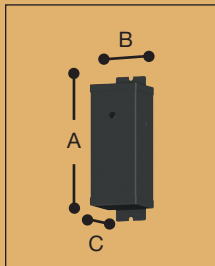


# Transformers



12v	24v
94460-12	94461-12
94462-12	94463-12
94464-12	94465-12
94062-12	94063-12
94064-12	94065-12



## Laminated Magnetic – Class I

Magnetic transformers are encased in a metal, black powder coated enclosure and potted to minimize noise and vibration. All are listed, thermally protected, and dimmable along with having resettable magnetic circuit breakers for short circuit protection. Housings feature easy-hang bracket, wiring access door and knockouts for line voltage entry.

### 12v Transformer/Hardwire

Include boost tap for use when transformer is located 20' or more from Rail system. Wet Location.

**94460-12** Black Finish 150w, Single Output  
A) 10.5" x B) 4.312" x C) 4.312"

**94462-12** Black Finish 300w, Single Output  
A) 10.562" x B) 4.375" x C) 3.875"

**94464-12** Black Finish 600w (2 x 300w each), Dual Output  
One switch operates both 300 Watt outputs encased in housing. Balance wattage loading on each transformer output.  
A) 10.562" x B) 5" x C) 5"

### Multi-Tap

Multi-tap transformers compensate for voltage drop on long secondary runs to the rail system.

**(12v) 12,13,14,15v**  
Wet Location.

**94062-12** Black Finish 300w, Single Output  
A) 8.75" x B) 4.375" x C) 3.875"

**94064-12** Black Finish 600w, (2 x 300w each), Dual Output  
One switch operates both 300 Watt transformers encased in housing. Balance wattage loading on each transformer output.  
A) 9.5" x B) 5.375" x C) 4.75"

### 24v Transformer/Hardwire

Terminal block provides quick and easy means of wiring without the need for wire connectors. 24v 1000w model has a high ambient rating for use in areas up to 55°C (132°F). Wet Location.

**94461-12** Black Finish 250w, Single Output  
A) 10.75" x B) 4.5" x C) 4.25"

**94463-12** Black Finish 500w, Single Output  
A) 11.5" x B) 4.5" x C) 4.25"

**94465-12** Black Finish 1000w, (2 x 500w each), Dual Output  
One switch operates both 500 Watt outputs encased in housing. Balance wattage loading on each transformer output.  
A) 12.5" x B) 6.25" x C) 6"

**(24v) 24,26,28,30v**  
Wet Location.

**94063-12** Black Finish 500w, Single Output  
A) 9.5" x B) 5.375" x C) 4.75"

**94065-12** Black Finish 1000w, (2 x 500w each), Dual Output  
One switch operates both 500 Watt outputs encased in housing. Balance wattage loading on each transformer output.  
A) 10.5" x B) 6" x C) 5.5"

## Electronic Transformers (12v only) – Class II

### Hardwire

Electronic transformers have soft start circuitry which increases lamp life. They emit no audible noise, are listed, moisture and shock resistant, employ automatically resetting short circuit protection (9454 only), and are dimmable.



### 12v Transformer/Hardwire

**9454-12** Black Finish  
**9457-12** Black Finish  
L: 2.75" W: 1.5" H: 1.125"  
Wattage: 15-60w Class II

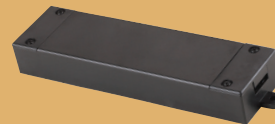
6" input and output leads for easy installation offers short circuit protection. 9454-12 employs an automatic resettable thermal protector. 9457-12 employs an internal non-replaceable fuse only.



### 12v Transformer Hardwire

**9456-12** Black Finish  
L: 6.25" W: 2.25" H: 1.687"  
Wattage: 60-150w Class II

Includes terminal block for 12/2 AWG max. romex input and 10/2 AWG Ambiance® cable output.



### 12v In-Line Transformer Hardwire

**98159-12** Black Finish (shown)  
**98159-15** White Finish  
L: 7.937" W: 2" H: 1"  
Wattage: 60-150w Class II

Includes a terminal block on one end for 12/2 AWG max. Romex input and a terminal block on the opposite end for 10/2 AWG Ambiance® cable providing an in-line connection. Ideal for mounting undercabinet.



### 12v Transformer Hardwire Dual Class II Output

**98076-12** Black Finish (shown)  
**98076-15** White Finish  
L: 5" W: 3.25" H: 1"  
Wattage: 2 x 60w Class II

Includes terminal block for one 10/2 AWG max. Romex input and two Class II 60W outputs up to 10 AWG wire. May be dimmed with a standard, incandescent dimmer.

### Plug-In



### 12v Transformer Plug-In

**9455-12** Black Finish  
**9455-15** White Finish (shown)  
L: 2.75" W: 1.5" H: 1.125"  
Wattage: 15-60w Class II

Complete with 8', 18/2 input cord, quick connect plug and in-line on/off switch for easy attachment to input cable and 36" 18/2 output cord and plug for easy connection to Ambiance® cable.



### 12v Transformer Plug-In

**9458-12** Black Finish  
L: 5.625" W: 2.25" H: 1.625"  
Wattage: 60-150w Class II

Includes terminal block for easy connection to Ambiance® cable. Complete with 8', 18/2 cord, quick connect plug and in-line on/off switch for easy attachment to input cable.



### 12v Transformer Plug-in Dual Class II Output

**98075-12** Black Finish (shown)  
**98075-15** White Finish  
L: 5" W: 3.25" H: 1"  
Wattage: 2 x 60w Class II

Complete with 8', 18/2 cord, quick connect plug and in-line on/off switch for easy attachment to input cable. Includes two Class II 60W outputs with three receptacles on each output.

# Transformers

## Hardwire

Electronic transformers have soft start circuitry which increases lamp life. They emit no audible noise, are listed, moisture and shock resistant, employ automatically resetting short circuit protection (9454 only), and are dimmable.

### 12v Transformer/Hardwire

**9454-12** Black Finish  
**9457-12** Black Finish

L: 2.75" W: 1.5" H: 1.125"  
Wattage: 15-60w Class II



6" input and output leads for easy installation. Use electronic transformers for small installations or where placement of the transformer is within close proximity to the lighting system. 9457-12 employs an internal non-replaceable fuse only.

### 12v Transformer Hardwire

**9456-12** Black Finish

L: 6.25" W: 2.25" H: 1.687"  
Wattage: 60-150w Class I

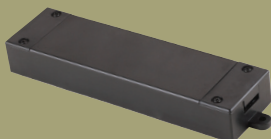


Includes terminal block for 12/2 AWG max. romex input and 10/2 AWG Ambiance® cable output.

### 12v In-Line Transformer Hardwire

**98159-12** Black Finish  
**98159-15** White Finish

L: 7.937" W: 2" H: 1"  
Wattage: 60-150w Class I

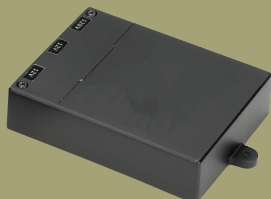


Includes a terminal block on one end for 12/2 AWG max. Romex input and a terminal block on the opposite end for 10/2 AWG Ambiance® cable providing an in-line connection.

### 12v Transformer Hardwire Dual Class II Output

**98076-12** Black Finish  
**98076-15** White Finish

L: 5" W: 3.25" H: 1"  
Wattage: 2 x 60w Class II



Includes terminal blocks for one 10/2 AWG max. Romex input and two Class II 60W outputs up to 10 AWG wire. May be dimmed with a standard, incandescent dimmer.

## Plug-In

### 12v Transformer Plug-In

**9455-12** Black Finish  
**9455-15** White Finish

L: 2.75" W: 1.5" H: 1.125"  
Wattage: 15-60w Class II



Complete with 8', 18/2 input cord, quick connect plug and in-line on/off switch for easy attachment to input cable and 36" 18/2 output cord and plug for easy connection to Ambiance® cable.

### 12v Transformer Plug-In

**9458-12** Black Finish

L: 5.625" W: 2.25" H: 1.625"  
Wattage: 60-150w Class I



Includes terminal block for easy connection to Ambiance® cable. Complete with 8', 18/2 cord, quick connect plug and in-line on/off switch for easy attachment to input cable.

### 12v Transformer Plug-in Dual Class II Output

**98075-12** Black Finish  
**98075-15** White Finish

L: 5" W: 3.25" H: 1"  
Wattage: 2 x 60w Class II



Complete with 8', 18/2 cord, quick connect plug and in-line on/off switch for easy attachment to input cable. Includes two Class II 60W outputs with three receptacles on each output.

# Disk Lighting Optional Trims

## Twist-On EyeLid Trim

D: 2.5" H: .75"

Polycarbonate twist-on eyelid trim shields glare while providing maximum light output.



**9451-12**  
Black Finish



**9451-15**  
White Finish



**9451-171**  
Antique Bronze Finish



**9451-742**  
Cinnamon Finish



**9451-962**  
Brushed Nickel Finish

## Twist-On HoneyComb Trim

D: 2.5" H: .25"

Polycarbonate twist-on honeycomb louver trim provides a 45° glare cut-off.



**9452-12**  
Black Finish



**9452-15**  
White Finish



**9452-171**  
Antique Bronze Finish

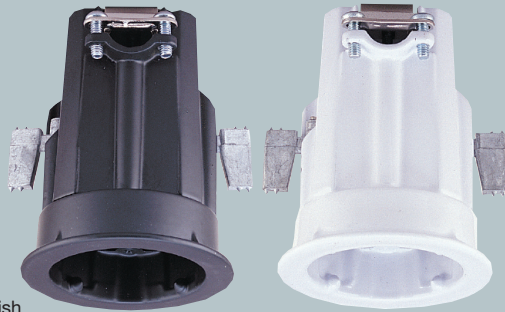


**9452-742**  
Cinnamon Finish



**9452-962**  
Brushed Nickel Finish

# Miniature Recessed Lighting



**Non-IC Miniature Recessed Housing**  
**9409-12** Black Powdercoat Finish  
**9409-15** White Powdercoat Finish  
 D: 2.75" H: 3.25"  
 Wattage: One 18w T5

9409-12

9409-15

Non-IC housing with compression fit accommodates multiple trim selections and offers easy trim attachment and lamp replacement. Adjustable socket accommodates a variety of decorative trims and T5 wedge base lamps for extended lamps life and versatility. Listed 12v and 24v.

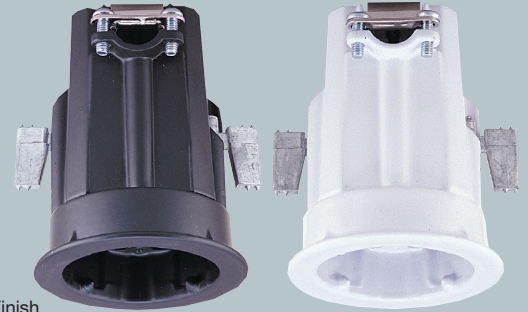
Wet Location – 12v only

Select from the following lamps:



**T5 Wedge Base**

9776	12v	8w	
9777	12v	12w	
9778	12v	18w	
9774	12v	18w	Xenon
9775	24v	18w	Xenon



**Non-IC Miniature Recessed Housing**  
**9412-12** Black Powdercoat Finish  
**9412-15** White Powdercoat Finish  
 D: 2.75" H: 3.25"  
 Wattage: One 20w G4 Bi-Pin

9412-12

9412-15

Non-IC housing with compression fit accommodates multiple trim selections and offers easy trim attachment and lamp replacement. Adjustable socket accommodates a variety of decorative trims and T3, G4 Bi-Pin 20w max halogen lamp.

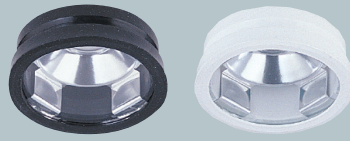
Select from the following lamps:



**T3, G4 Bi-Pin**

9784	12v	20w
------	-----	-----

## Accessories



**Open Trim with Lens**  
**9357-12** Black Finish  
**9357-15** White Finish  
 Clear Tempered Diffuser  
 D: 2" H: .75"

9357-12

9357-15

UV stabilized silicone rubber gasket holds a tempered borosilicate glass lens and polished aluminum reflector. Used in conjunction with 9409 and 9412 housings.



**Optional Decorative Metal Trim Ring**  
**9487-12** Black Finish  
**9487-15** White Finish  
 D: 3.25" H: .312"

9487-12

9487-15

Used in conjunction with 9409, 9412, 9424 and 9426 housings

# Transformers

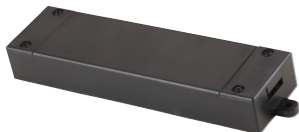
## Electronic Transformers (12v only) Hardwire Class II



12v Transformer/Hardwire  
**9454-12**  
**9457-12**



12v Transformer/Hardwire  
**9456-12**



12v In-Line Transformer/Hardwire  
**98159-12**  
**98159-15**



12v In-Line Transformer/Hardwire  
 Dual Class II Output  
**98076-12**  
**98076-15**

## Electronic Transformers (12v only) Plug-In Class II



12v Transformer Plug-In  
**9455-12**  
**9455-15**



12v Transformer Plug-In  
**9458-12**

Select from a variety of transformers. See page 547 for specifications.