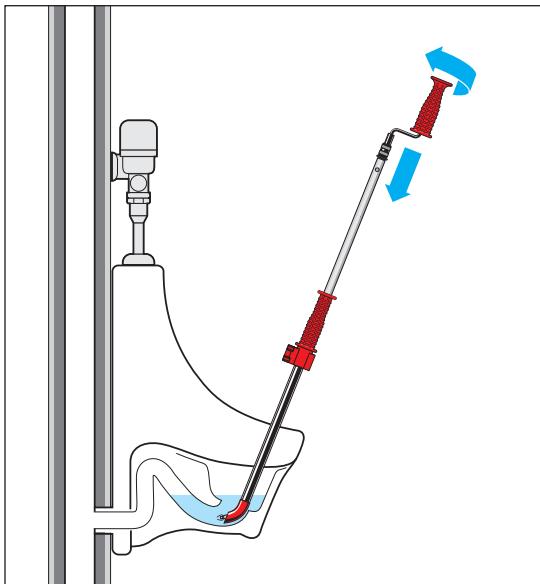


K-1 COMBINATION AUGER

The K-1 Combination Auger provides an all-in-one solution for removing blockages from urinals and shower drains.

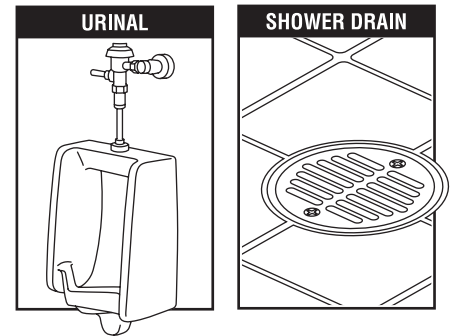


BENEFITS

- **Dual Power Operation** - provides additional power necessary for removing tough obstructions
- **Telescoping Design** - provides additional cable length needed to remove obstructions further down the line
- **“C” Cutter Head** - ideal for breaking up hard blockages
- **Left Hand Wound Cable** - strengthens cable and prevents kinking

SPECIFICATIONS

- Pipe Sizes Up to 2"
- Cable Length: 4 feet
- Cable Diameter: 3/8"
- Operation: Manual or Drill Powered
- Applications: Urinals & Shower Drains
- Cutter Head Type: “C” Cutter



RIDGID.COM

ORDERING INFORMATION

| CATALOG NO. | DESCRIPTION | WEIGHT | |
|-------------|-----------------------|--------|------|
| | | (lb.) | (kg) |
| 46683 | K-1 Combination Auger | 5 | 2.3 |

999-997-384.10

TOILET AUGERS

With Heavy Duty Cable

The RIDGID® toilet augers are the professional's choice for quickly opening clogged toilets. They are suitable for both standard and water conserving toilets and are available in 3' and 6' lengths. Each provides you with:

- Strong tri-wrap cable with three separate wrappings around the central core to power through and clear tough blockages.
- Vinyl guard to protect toilet bowl.
- Corrosion resistant tube.

K-3 - 3' TOILET AUGER

3' of cable completely reaches through the toilet.



K-6 - 6' TOILET AUGER

A quick lock adjustment extends the cable reach to 6', clearing beyond the toilet.



ORDERING INFORMATION

| CATALOG NO. | DESCRIPTION | WEIGHT | |
|-------------|-----------------------------------|--------|------|
| | | (lb.) | (kg) |
| 59787 | K-3 3' Toilet Auger w/Bulb Head | 4.4 | 2.0 |
| 59797 | K-6 6' Toilet Auger w/Bulb Head | 5.5 | 2.5 |
| 59802 | K-6DH 6' Toilet Auger w/Drop Head | 5.5 | 2.5 |