







DIAGNOSTICS, INSPECTION & LOCATING

Locating Equipment

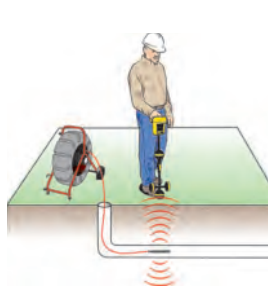
RIDGID® Receivers – RIDGID locating receivers feature an easy-to-use visual mapping display that allows you to locate utility lines and sondes/beacons with confidence. Use with a SeeSnake camera equipped with a sonde transmitter to locate the camera head during an inspection or use with a line transmitter to find buried utilities. These locators can also find flushable float sondes and remote transmitters attached to a push rod or drain cable.

	SeekTech SR-20	SeekTech SR-24	SeekTech® SR-60	NaviTrack® II	NaviTrack Scout®
					
	21893	44473	22163	96967	19238
PAGE NUMBER	12.30	12.31	12.32	12.35	12.36
Omni-Directional Mapping Display	Yes	Yes	Yes	Yes	Yes
User-Defined Frequencies	Yes up to 35 kHz	Yes up to 35 kHz	Yes - All Available	No	No
Number of Active Line Trace Frequencies	All up to 35 kHz	All up to 35 kHz	All up to 490 kHz	7	3
Sonde Frequencies	All up to 35 kHz	All up to 35 kHz	All up to 490 kHz	7	4
Passive Search	Omni-Seek (searches all passive bands at once)	Omni-Seek (searches all passive bands at once)	Omni-Seek (searches all passive bands at once)	50/60 Hz	50/60 Hz
Depth	Continuous	Continuous	Continuous	Continuous	Push Button
Weight w/batteries	3.5 lb.	4 lb.	5.1 lb.	5.1 lb.	3 lb.

RIDGID Transmitters – Accurately trace buried utilities by applying a signal with a RIDGID Line Transmitter. All transmitters have multiple frequency options and are capable of applying a signal by direct connection and induction. Powerful 5W and 10W transmitters apply a strong signal making for easier locates.

	SeekTech ST-33QR	SeekTech ST-510	SeekTech ST-305	NaviTrack	Brick
					
	26168	21903	21898	14818	20168
PAGE NUMBER	12.33	12.34	12.34	12.37	12.37
Max Power Output	5W	10W	5W	10W	5W
Digital Display	Yes	Yes	No	No	No
Line Trace Frequencies	All up to 490 kHz	5*	4	6	4
Inductive Frequencies	2	5*	3	6	4
Simultaneous Transmit 2 Line Frequencies	No	No	Yes	No	Yes
Weight w/batteries	11.1 lb.	9 lb.	2.5 lb.	9 lb.	2.5 lb.

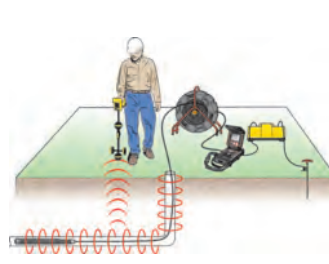
* The ST-510 Transmitter can also be set to frequencies used by other manufacturers' equipment.



Find sondes/beacons.



Direct connect to utility lines.



Find plastic pipe with integral line trace.



Induce a signal to locate utilities.

NaviTrack® Transmitters



NaviTrack Line Transmitter - 10 Watt

- For tracing buried cable, TV lines, phone lines and other metallic lines which can carry an electromagnetic signal.
- Up to 10 watts of power output.
- Two 25' coiled connectors.
- Conductive ground rod.
- Inductive signal clamp (optional accessory).

Specifications

- Frequencies – 128 Hz, 1 kHz, 8 kHz, 33 kHz – 10 Watt.
- 200 kHz, 262 kHz – 1 Watt output power.
- Power Source – 8 D-Cell Batteries.

Catalog No.	Description	Weight	
		lb.	kg
14818	NaviTrack Line Transmitter	8	3.4

Accessories

Catalog No.	Description	Weight	
		lb.	kg
20973	SeekTech 4" (100 mm) Inductive Signal Clamp	2	0.90



NaviTrack Brick - 5 Watt

- For tracing buried cable, TV lines, phone lines and other metallic lines which can carry an electromagnetic signal.
- Fully variable 5 watts of power output.
- Lightweight, easy to carry.
- Conductive ground rod.
- Two 10' connectors.

Specifications

- Frequencies – 1 kHz, 8 kHz, 33 kHz, 262 kHz.
- Power Source – Six C-Cell Batteries.

Catalog No.	Description	Weight	
		lb.	kg
20168	NaviTrack Brick Transmitter	2	0.9

Accessories

Catalog No.	Description	Weight	
		lb.	kg
20973	SeekTech 4" (100 mm) Inductive Signal Clamp	2	0.90