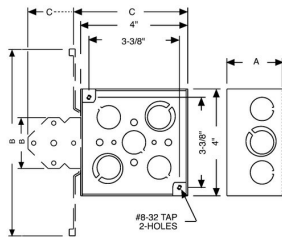




## 4 IN. SQUARE WELDED BOXES - 2-1/8 IN. DEEP WITH CONDUIT KO'S

4 in. Square Boxes, 2-1/8 in. Deep - Welded with Conduit KO's

A13



Catalog #: 233

### APPLICATIONS

RACO® Boxes are installed in walls or ceilings for lighting fixtures, switches or receptacles. Square boxes are used where multiple conductor runs are split into two or more directions to bring power to a number of electrical devices.

### PRODUCT FEATURES

Combination screw heads provide for faster installation.  
TKO® Knockouts offer greater flexibility with RACO patented combination 1/2" and 3/4" knockout.  
N/A

### UL LISTED

File E195978

### COMPLIANCES

All RACO® single gang, two gang, 4 in. square, and single gang gangable UL listed steel boxes are acceptable for use in 2-hour fire rated walls. For additional information, consult UL "Fire Resistance Directory" or the UL website at [www.ul.com](http://www.ul.com)  
600V Per UL 514-A, suitable for use without a bonding jumper in circuits up to 600 volts  
MSDS  
[www.hubbell-rtb.com/certifications/Hubbell-RACO\\_MSDS\\_for\\_Steel\\_Boxes\\_and\\_Covers.pdf](http://www.hubbell-rtb.com/certifications/Hubbell-RACO_MSDS_for_Steel_Boxes_and_Covers.pdf)

### FIRE RESISTANCE

Acceptable for use in 2-hour rated walls

### GENERAL PRODUCT INFORMATION

Wiring System: Conduit

### CONFIGURATION

Bracket Type: No Bracket  
Drawn or Welded: Welded  
Raised Ground: No  
Side Knockout(s): (8) 1 in.  
Bottom Knockouts(s): (3) 1/2 in. & (2) 3/4 in.

### DRAWING DIMENSIONS

Dimension A: 2-1/8 in.

### PRODUCT MEASUREMENTS

Depth: 2-1/8 in.  
Cubic Inches (cm<sup>3</sup>): 30.3 (496.5)  
Wt. Ea. (Lbs.): 0.890  
Product Length (in.): 2.19  
Product Width (in.): 4.00  
Product Height (in.): 4.00

### PACKAGING

Minimum Pack Qty.: 25  
Std. Pkg.: 25  
Product UPC-A Labeled: No  
Weight (Lbs. Per/C): 89.00  
Ship Carton Length (in.): 18.75  
Ship Carton Width (in.): 8.88  
Ship Carton Height (in.): 7.38  
Ctn Weight (Lbs.): 22.25  
Pallet Qty: 1750  
UPC Number: 050169902332  
I2of5: 50050169902337