

security lighting

STL2HBLEDD2X10

The flexibility of either one or two 10W floodlights combined with a 200° view sensor that reaches 100' wide and 30' out.



Performance

Equivalent Replaces (2) 45W PAR
(2) 45-75W PAR

NEMA Type 5H x 5V
Color Temperature (CCT) 3000K 5000K
Input Watts 27 26
Output Lumens* 594 676
Lumens Per Watt 22 26
Color Accuracy (CRI) 75 61

**Spot reflector included. For details on spot optics, please see page 72.*

Specifications

UL Listing

Suitable for wet locations

Lifespan

100,000-hour LED lifespan based on IES LM-80 results and TM-21 calculations

STL200 Sensor

Switching Capacity: 8 Amps; 1000W Incandescent @120V, 250W Fluorescent; 750 Watts LED @120 Volts 0.8pF Driver; 8 Amps, 500 Watts LED @120 Volts 0.5pF Driver; 120V AC 60HZ; Power Consumption 1W; Time Adjustment 5 Sec. to 12 Min; Surge protection up to 6 kV.

Drivers

Constant Current, Class 2, 120V: 0.86A; 50/60 Hz, 1 kV surge protection, 350mA, 0.3 Amps.

Cold Weather Starting

Minimum starting temperature is -40°C (-40°F).

Ambient Temperature

Suitable for use in 40°C (104°F)

Thermal Management

Patented die-cast aluminum system for optimal heat dissipation to extend LED lifespan

Housing

Precision die-cast aluminum housing

Mounting

Heavy-duty mounting arm with "O" ring seal & stainless steel screws. Corrosionproof polycarbonate mounting plate with weatherseal gasket.

Reflector

Hydroformed aluminum for smooth light distribution and low glare

Gaskets

High-temperature silicone. O-Ring gasketed plug.

IESNA LM-79 & LM-80 Testing

RAB LED luminaires have been tested by an independent NVLAP Certified laboratory in accordance with IESNA LM-79 and LM-80, and have received the Department of Energy "Lighting Facts" label.

Options

Also available as a single head unit with sensor



Motion detection

200° view, reaches 100' wide and 30' out



Color finish

Available in optional white finish



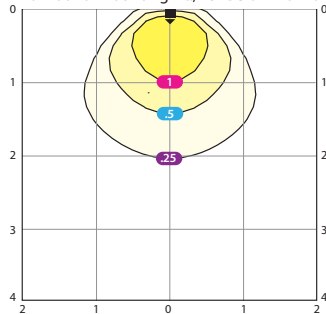
Ordering information

Product Family	Wattage	Color Temp	Finish Color
STL2HBLED	10 2X10	Blank Y	Blank W
	10W 2X10W	5000K 3000K	Bronze White

Photometrics & detection pattern

HBLED10

10W at 10' Mounting Ht., 45° Below Horizon



Mounting Height	8	10	12	15
Multiplier	1.6	1.0	0.7	0.4

Grid Scale:
Multiples of mounting height, values shown in footcandles

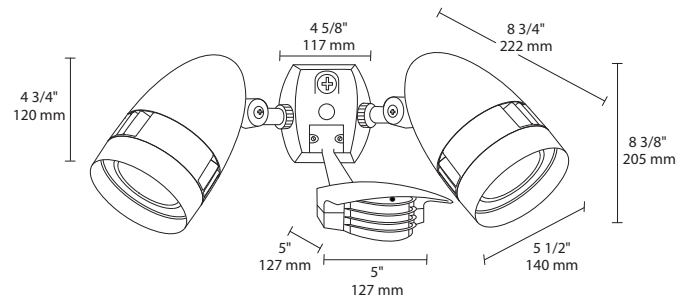
Recessed LED module and optimized reflector provide smooth light distribution with no hot spots and low glare.

RAB lighting design engineers can create a custom lighting layout for your job. For free.

Photometric Report #ITL26993

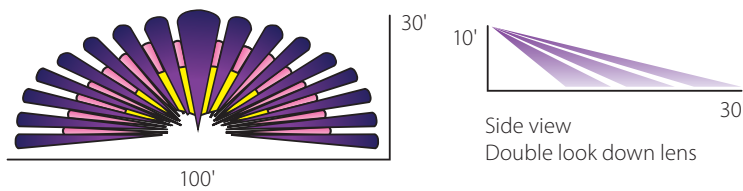
Dimensions & weight

Weight: 10.5 lbs / 4.8 kg



STL200

200° view, double look-down lens, reaches 100' wide and 30' out



STL2HBLEDD2X13

The flexibility of either one or two 13W floodlights combined with a 200° view sensor that reaches 100' wide and 30' out.



Performance

Equivalent Replaces (2) 90W PAR
(2) 90-100W PAR

NEMA Type	5H x 5V		
Color Temperature (CCT)	3000K	4000K	5000K
Input Watts	30	30	30
Output Lumens*	1324	1448	1448
Lumens Per Watt	44	48	47
Color Accuracy (CRI)	86	87	61

*Spot reflector included. For details on spot optics, please see page 76.

Specifications

UL Listing

Suitable for wet locations

Lifespan

100,000-hour LED lifespan based on IES LM-80 results and TM-21 calculations

STL200 Sensor

Switching Capacity: 8 Amps; 1000W Incandescent @120V, 250W Fluorescent; 750 Watts LED @120 Volts 0.8pF Driver; 8 Amps, 500 Watts LED @120 Volts 0.5pF Driver; 120V AC 60HZ; Power Consumption 1W; Time Adjustment 5 Sec. to 12 Min; Surge protection up to 6 kV.

Drivers

Constant Current, Class 2, 120V: 0.6A; 50/60 Hz, 1 kV surge protection, 350mA, 0.3 Amps.

Cold Weather Starting

Minimum starting temperature is -40°C (-40°F).

Ambient Temperature

Suitable for use in 40°C (104°F)

Thermal Management

Patented die-cast aluminum system for optimal heat dissipation to extend LED lifespan

Housing

Precision die-cast aluminum housing

Mounting

Heavy-duty mounting arm with "O" ring seal & stainless steel screws. Corrosionproof polycarbonate mounting plate with weatherseal gasket.

Reflector

Hydroformed aluminum for smooth light distribution and low glare

Gaskets

High-temperature silicone. O-Ring gasketed plug.

IESNA LM-79 & LM-80 Testing

RAB LED luminaires have been tested by an independent NVLAP Certified laboratory in accordance with IESNA LM-79 and LM-80, and have received the Department of Energy "Lighting Facts" label.

Options

Also available as a single head unit with sensor



Motion detection

200° view, reaches 100' wide and 30' out



Color finish

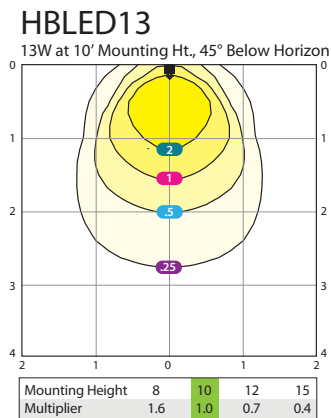
Available in optional white finish



Ordering information

Product Family	Wattage	Color Temp	Finish Color
STL2HBLED			
	13 13W 2X13 2X13W	Blank 5000K N 4000K Y 3000K	Blank Bronze W White

Photometrics & detection pattern



Grid Scale:
Multiples of mounting height, values shown in footcandles

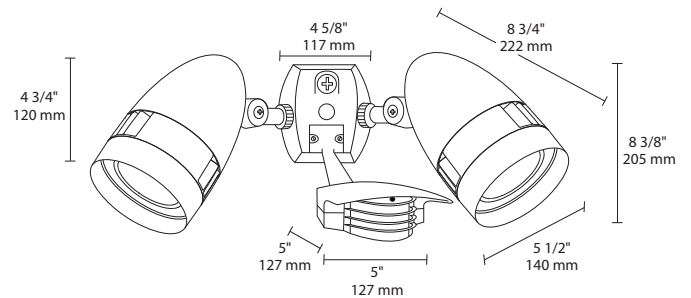
Recessed LED module and optimized reflector provide smooth light distribution with no hot spots and low glare.

RAB lighting design engineers can create a custom lighting layout for your job. For free.

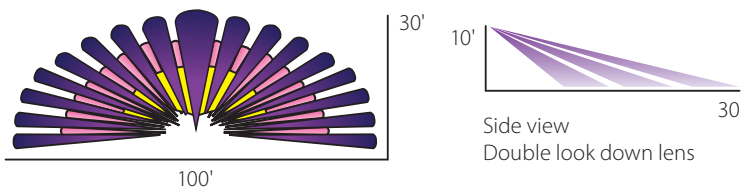
Photometric Report #ITL26997

Dimensions & weight

Weight: 10.5 lbs / 4.8 kg



STL200
200° view, double look-down lens, reaches 100' wide and 30' out



security lighting

STL200-LED/277

Stealth Sensor with special 200° detection pattern to provide wide coverage side to side. Excellent for building perimeter protection. Lens masks allow customization of detection zone.

Specifications

UL Listing

Suitable for wet locations

Lifespan

100,000-hour LED lifespan based on IES LM-80 results and TM-21 calculations

STL110-LED Sensor

Switching Capacity: 8 Amps @ 277V

Color Matched Lens

Dark lens with bronze units, white lens with white units.

Ambient Temperature

Suitable for use in 40°C (104°F)

Temperature Compensation

Sensitivity adjusts automatically for consistent detection in hot and cold ambient temperatures.

Floodlights

Precision die cast aluminum. 1/2" NPS threaded arm with serrated locking swivel fits all standard mounting boxes and covers.

LED Detection Indicator

Shows when sensor is detecting in daytime and glows red at night for "on-guard" deterrence.



Advanced Detection Logic

Minimizes false triggers.

Photoelectric Control

Deactivates lights during daylight. Fully adjustable for 24 hour operation or custom applications.

Advanced Detection Logic

Minimizes false triggers.

RF Immunity

Circuits fully shielded for maximum radio frequency immunity.

IESNA LM-79 & LM-80 Testing

RAB LED luminaires have been tested by an independent NVLAP Certified laboratory in accordance with IESNA LM-79 and LM-80, and have received the Department of Energy "Lighting Facts" label.

Horizontal Lock, No-tool Joints

Keeps sensing pattern level for fast, error-free installation.



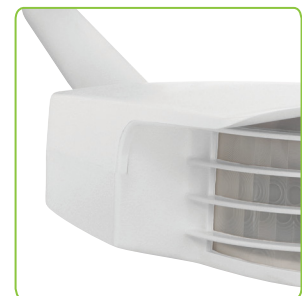
Motion detection

200° view, reaches 70' wide and 50' out



Color finish

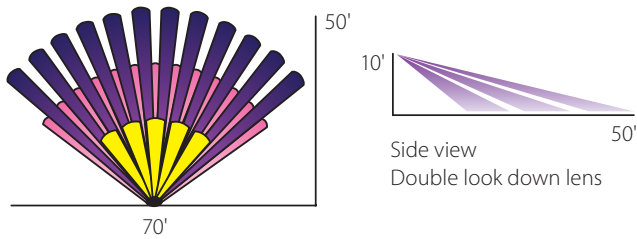
Available in optional white finish



Photometrics & detection pattern

STL200-LED

200° view, double look-down lens, reaches 70' wide and 50' out



Dimensions

Weight: 1 lb / .453 kg

