

data sheet

PURLIN CLAMP



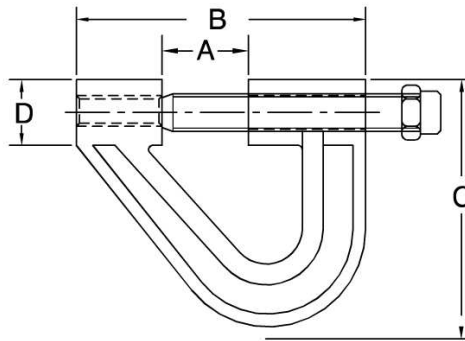
3/8" Rod Size

Finish: Plain (available Galvanized - special order)

Function: Structural attachment to lower beams or purlins with 45° flanges up to 2" long and 90° flanges up to 1-1/2" high

Features: Hardened steel set screw

Approvals: UL Listed, FM Approved



ITEM#	DESCRIPTION	A	B	C	D	MAX LOAD	MAX PIPE SIZE
2550067	3/8" PURLIN CLAMP	1"	3-1/8"	2-7/8"	3/4"	450 LBS.	4"

The information contained herein is produced in good faith and is believed to be reliable but is for guidance only. Suppliesdepot.com and its agents cannot assume liability or responsibility for results obtained in the use of its product by persons whose methods are outside or beyond our control. It is the user's responsibility to determine the suitability of any of the products, methods of use, or preparation prior to use, mentioned in our literature. It is the user's responsibility to observe and adapt such precautions as may be advisable for the protection of personnel and property in the handling and use of any of our products.