

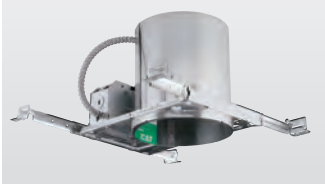
6" INCANDESCENT

IC, NON-IC, AIR-TIGHT UNIVERSAL HOUSINGS

For complete fixture, order housing with trim.

New Construction

Air-Tight IC and Non-IC



P87-AT

Ceiling opening: 6-7/8" dia.
Plaster frame: 7-7/8" x 10-3/4"
Recessed depth: 7-1/4"
Pryouts: 1/2" & 3/4"

P87-AT

- Can be installed in ceilings from 1/2" to 2-1/2" thick
- Meets Washington State Energy Code requirements
- UL & CUL listed for damp locations and through wiring
- Integral Romex clamp
- Tool-less can adjustment for varying ceiling thickness
- Slotted, interlocking bar hangers securely span 24" T-bar spacing
- Full reflector design eliminates light leaks
- Rated for 8 #12 90° conductors (4 in/4 out)
- US Patent #5758959, 5857766, 6004011

Remodel IC and Non-IC



P187-TG

Ceiling opening: 6-5/8" dia.
Recessed depth: 7-1/2"
Pryouts: 1/2"

P187-TG

- Retrofit version of the P87-AT
- Exclusive mounting slide bars permit quick and solid mounting in ceilings
- Can be installed in ceilings from 1/2" to 1-1/2" thick
- IC/Non-IC peel away label for field conversion
- UL and CUL listed for damp locations and through wiring
- Rated for 4 #12 90° conductors (2 in/2 out)
- Rated for 60° supply wires in end-of-run applications
- Can be converted to Air-Tight in the field with the P8593-01 gasket kit. See page 826
- US Patent #5758959

New Construction

Air-Tight IC and Non-IC



P87-ATQC

Ceiling opening: 6-7/8" dia.
Plaster frame: 7-7/8" x 10-3/4"
Recessed depth: 7-1/4"
Pryouts: 1/2" & 3/4"

P87-ATQC

- Quick-connects allow simple installation of 12-20 AWG wire, without the need for wire nuts
- Can be installed in ceilings from 1/2" to 2-1/2" thick
- Meets Washington State Energy Code requirements
- UL & CUL listed for damp locations and through wiring
- Integral Romex clamp
- Tool-less can adjustment for varying ceiling thickness
- Slotted, interlocking bar hangers securely span 24" T-bar spacing
- Full reflector design eliminates light leaks
- Rated for 8 #12 90° conductors (4 in/4 out)
- US Patent #5758959, 5857766, 6004011



Quick-connect

For insulated or non-insulated ceilings. 7-3/4" outside diameter (OD), except where indicated.

NON-IC TRIMS

Insulation must be 3" from housing. 7-3/4" outside dia.



PIN HOLE

P8065-28 White with Black Baffle
75w PAR16, 40w R16,
50w R20/PAR20/PAR30,
40w A19



WALL WASHER

P8052-28 White Baffle
60w A19



FRESNEL

Wet location listed
P8062-28 White
Metal flange
60w A19, 75w PAR 30
Short Neck



ALBALITE GLASS

Wet location listed
P8060-28 White
Metal flange
60w A19, 75w PAR 30
Short Neck



ALBALITE GLASS

Wet location listed
P8008-60 White
Non-metallic flange
60w A19, 75w PAR 30
Short Neck