



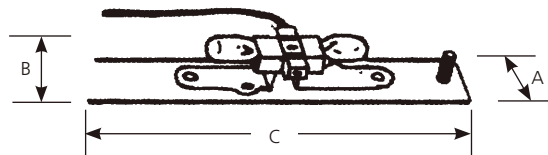
Incandescent

Hide-a-Lite I Open Faced Strip

Undercabinet

Type _____
-01WB
P7506

Catalog No.	Finish	Lamping	Wattage	Dimensions (Inches)		
	White			A	B	C
P7506	-01WB	16-3w Incandescent	48w	3/4	3/4	48



Specifications:

General

- Open strips provide continuous lighting for inside cabinets, valances, toe spaces and alcoves
- 12v 3 watt incandescent lamps included with unit (T3-1/2 wedge base #161)
- Twin lamp sockets on 6" centers
- Sockets mounted on a natural aluminum strip
- Strip may be cut to any length
- Companion strip for corners, and covered strips for under cabinets are available

Mounting

- Flush mounted in any concealed area
- Mounting screws provided

Electrical

- 12 volt system
- Units must be connected to an approved 12v transformer of the proper capacity
- Units must be properly grounded
- Wedge based T3-1/2 socketss

Labeling

- Not UL listed

Progress Lighting
701 Millennium Blvd.
Greenville, South Carolina
29607

www.progresslighting.com

Rev. 09/11