

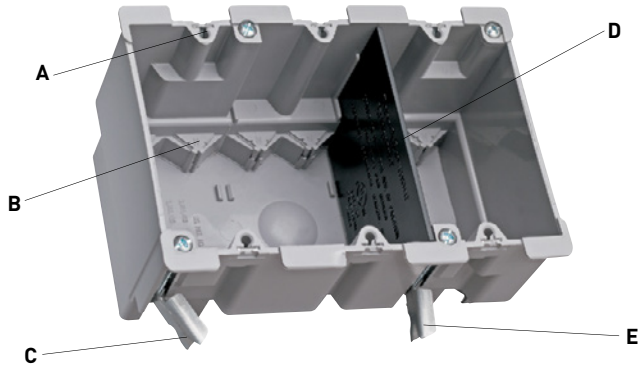
SLATER® PLASTIC BOXES

Old Work Boxes & Shallow Boxes

S352W

Old Work Switch & Outlet Box with Quick/Click®

- A. Quick/Click feature** secures devices quickly and easily. Does not strip when over-torqued. See Page M-20 for details.
- B. 4 Auto/Clamps® on each** end eliminate the need for separate cable clamps. See Page M-20 for details.
- C. Metal swing bracket** for quick mounting in existing walls.
- D. Divider plate** (LVDIV1, sold separately) used when installing line and low-voltage devices or multiple 277 volt devices in same box. See Page M-5 for details.
- E. Swing bracket** adjusts from 1-1/4" to 1/8".



3 Gang Old Work Box shown with Divider Plate, LVDIV1

Big 52 cubic inch capacity.

Easy installation, rectangular cutout.



S118W



S122W



S232W



M118W



P108N



P108W

CATALOG NUMBER	CU. IN. VOL.	DESCRIPTION	DIMENSIONS			WIRE FILL (AWG)	QTY. PER CARTON
			L	W	D		
OLD WORK SWITCH & OUTLET BOXES WITH QUICK/CLICK							
S116W	16.0	Single gang. Swing-bracket for mounting adjusts from 1/4" down to 1/8". 2 Auto/Clamps® each end.	3 3/4	2 1/4	2 3/4	8 No. 14 7 No. 12 6 No. 10	100
S118W	18.0	Single gang. Swing-bracket for mounting adjusts from 1/4" down to 1/8". 2 Auto/Clamps® each end.	3 3/4	2 1/4	3 1/32	9 No. 14 8 No. 12 7 No. 10	100
S232W	32.0	Two gang. Swing-bracket for mounting adjusts from 1/4" down to 1/8". 4 Auto/Clamps® each end.	3 3/4	4 1/16	3 1/32	16 No. 14 14 No. 12 12 No. 10	50
S352W	52.0	Three gang. Swing-bracket for mounting adjusts from 1/4" down to 1/8". 6 Auto/Clamps® each end.	3 3/4	5 7/8	3 1/32	26 No. 14 23 No. 12 20 No. 10	10
M118W NEW! P&S Exclusive	18.0	Single gang metal box. Swing bracket for mounting adjusts 1 1/4" down to 1/8". Four 3/4"/1 1/4" KOs plus integral Romex clamp.	3 3/4	2 1/4	3	8 No. 14 7 No. 12 6 No. 10	50
DEEP OLD WORK SWITCH & OUTLET BOXES WITH QUICK/CLICK							
S122W	22.0	Single gang deep. Swing-bracket for mounting adjusts from 1/4" down to 1/8". 2 Auto/Clamps® each end.	3 3/4	2 5/16	3 1/2	-	50
OLD WORK SWITCH & OUTLET BOXES WITH THREADED MOUNTING HOLES							
P116W	16.0	Single gang. Swing-bracket for mounting adjusts from 1/4" down to 1/8". 2 Auto/Clamps® each end.	3 3/4	2 1/4	2 3/4	8 No. 14 7 No. 12 6 No. 10	100
SHALLOW SWITCH & OUTLET BOXES for use in limited depth application							
P108W	8.0	Single gang. Old work flange box for retrofit applications.	3 3/4	2 5/16	1 1/8	-	20
P108N	8.0	Single gang. With vertical side bracket for new construction applications.	3 3/4	2 5/16	1 1/8	-	20

All boxes are UL listed.
UL Classified for 2 Hour Fire Resistance. (Does not apply to S232W, S352W, P108W, and P108N.)

SLATER® PLASTIC BOXES

4" Square Boxes & Covers


4SBC

RC1

RC2

S4418BAC

S4421RAC

S4421SAC

CATALOG NUMBER	CU. IN. VOL.	DESCRIPTION	DIMENSIONS			WIRE FILL (AWG)	QTY. PER CARTON
			L	W	D		
COVERS FOR 4" SQUARE BOXES							
4SBC	-	4" square flat blank cover - gray	4 1/4	4 1/4	N/A	-	50
4SBCW	-	4" square flat blank cover - white	4 1/4	4 1/4	N/A	-	50
RC1	3.2	Single gang device cover, raised 3/8"	4 1/4	4 1/4	3/8	-	100
RC2	5.3	Two gang device cover, raised 3/8"	4 1/4	4 1/4	3/8	-	100
4" SQUARE BOXES WITH THREADED MOUNTING HOLES							
S4418BAC	17.0	Shallow 4" square. Captive mounting nail each end. 2 Auto/Clamps® each end. 2 #8 mounting screws factory installed.	4 1/4	4 1/4	1 1/4	9 No. 14 8 No. 12 7 No. 10	50
S4421RAC	21.0	4" square. Captive mounting nail each end. 3 Auto/Clamps® each end, 2 on side opposite to nails. 2 #8 mounting screws factory installed.	4 1/4	4 1/4	1 1/2	10 No. 14 9 No. 12 8 No. 10	100
S4421SAC	21.0	4" square. For wood and steel stud mounting. 3 Auto/Clamps each end, 2 on side opposite bracket. 2 #8 mounting screws factory installed.	4 1/4	4 1/4	1 1/2	10 No. 14 9 No. 12 8 No. 10	50
S4435RAC	35.0	4" square. Captive mounting nail each end. 3 Auto/Clamps® each end, 2 on side adjacent to nails. 2 #8 mounting screws factory installed.	4 1/4	4 1/4	2 3/8	17 No. 14 15 No. 12 14 No. 10	50
S4435SAC	35.0	4" square. For wood and steel stud mounting. 3 Auto/Clamps® each end, 2 on side opposite bracket. 2 #8 mounting screws factory installed.	4 1/4	4 1/4	2 3/8	17 No. 14 15 No. 12 14 No. 10	50


S4435RAC

S4435SAC

All boxes are UL Listed. UL Classified for 2 Hour Fire Resistance. (Does not apply to 4SBC and 4SBCW.)


P242SRD

P242RRD

CATALOG NUMBER	CU. IN. VOL.	DESCRIPTION	DIMENSIONS			WIRE FILL (AWG)	QTY. PER CARTON
			L	W	D		
RANGE & DRYER BOXES							
P242SRD	42.0	1/2" offset for wood or steel stud mount with metal cable clamp. Captive mounting screw each end.	3 3/4	4	4	16 No. 10 14 No. 8 8 No. 6	12
P242RRD	42.0	1/2" offset for wood or steel stud mount with metal cable clamp. Captive mounting nail each end.	3 3/4	4	4	16 No. 10 14 No. 8 8 No. 6	12

All boxes are UL Listed. UL Classified for 2 Hour Fire Resistance (pending).