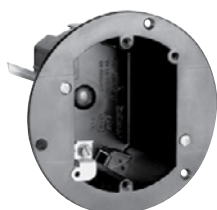


SLATER® PLASTIC BOXES

Round Ceiling Boxes



C118WAC



C118WGAC



C118RAC



C118RGAC



C118HGAC



C118HAC

CATALOG NUMBER	CU. IN. VOL.	DESCRIPTION	DIMENSIONS (IN.)		WIRES (AWG)	QTY. PER CARTON	UL LISTED
			DIA.	DEPTH			MAX. WEIGHT RATING
3 3/4" ROUND OLD WORK CEILING BOXES							
C118WAC	18.0	3 3/4" round. Swing brackets for mounting adjust from 1 1/4" down to 1/8". 4 Auto/Clamps®. Includes device mounting holes.	3 3/4"	2 11/16"	9 No. 14 8 No. 12 7 No. 10	50	20 lbs.
C118WGAC	18.0	3 3/4" round. With grounding lug. Swing brackets for mounting adjust from 1 1/4" down to 1/8". 4 Auto/Clamps®. Includes device mounting holes.	3 3/4"	2 11/16"	9 No. 14 8 No. 12 7 No. 10	50	20 lbs.
3 3/4" ROUND OLD WORK CEILING BOXES							
C118WACX	18.0	3 3/4" round. Same as C118WAC, except without swing brackets, for screw mounting into OSB or plywood. 4 Auto/Clamps®.	3 3/4"	2 11/16"	9 No. 14 8 No. 12 7 No. 10	50	8 lbs.
C118WGACX	18.0	3 3/4" round. Same as C118WGAC, except without swing brackets, for screw mounting into OSB or plywood. 4 Auto/Clamps®.	3 3/4"	2 11/16"	9 No. 14 8 No. 12 7 No. 10	50	8 lbs.
3 3/4" ROUND CEILING BOXES*							
C118RAC	18.0	3 3/4" round. 2 captive mounting nails. 4 Auto/Clamps®.	3 3/4"	3 5/32"	9 No. 14 8 No. 12 7 No. 10	50	50 lbs.
C118RGAC	18.0	3 3/4" round with ground lug. 2 captive mounting nails. 4 Auto/Clamps®.	3 3/4"	3 5/32"	9 No. 14 8 No. 12 7 No. 10	50	50 lbs.
C118HAC	18.0	3 3/4" round. Bar-hanger adjusts to 16" or 24" joist spacing. 4 Auto/Clamps®.	3 3/4"	3 5/32"	9 No. 14 8 No. 12 7 No. 10	50	50 lbs.
C118HGAC	18.0	3 3/4" round with ground lug. Bar-hanger adjusts to 16" or 24" joist spacing. 4 Auto/Clamps®.	3 3/4"	3 5/32"	9 No. 14 8 No. 12 7 No. 10	50	50 lbs.

*UL Classified for 2 Hour Fire Resistance.