

12V & 24V LED TAPE LIGHT STANDARD & SIDE-LIT ACCESSORIES



Shrink Wrap Tubes
NATL-400 Pack of 5



Mounting Clips
NATL-401 Pack of 5



4' Channel
NATL-420 Plastic B/W



4' Aluminum Channel w/Lens
NATL-C23 Shallow Wings
NATL-C24 Shallow



4' Aluminum Channel w/Lens
NATL-C25 Deep Wings
NATL-C26 Deep



4' Aluminum Channels
NATL-C27 J-Style
NATL-C28 Corner w/Lens



End Cap
NATL-403 12V / 24V



Power Line Interconnector
NATL-509 24V, 9"
NATL-515 12V, 9"



Power Line Interconnector with Switch
NATL-511 24V, 11"
NATL-517 12V, 11"



12V / 24V Interconnection Cables
NATL-202 2" Cable
NATL-206 6" Cable
NATL-218 18" Cable
NATL-236 36" Cable
NATL-272 72" Cable



12V / 24V Splitter Cable
NATL-300 "Y" Cable



12V / 24V Splitter Cable
NATL-301 "X" Cable



Power Line Connector
NAPK-10 12V, 10'
NAPK-30 12V, 30'
NALTL-10 24V, 10'
NALTL-30 24V, 30'



Flexible Extension Cord
NRA-125/6 6" Cable
NRA-125/12 12" Cable
NRA-125/18 18" Cable
NRA-125/72 72" Cable

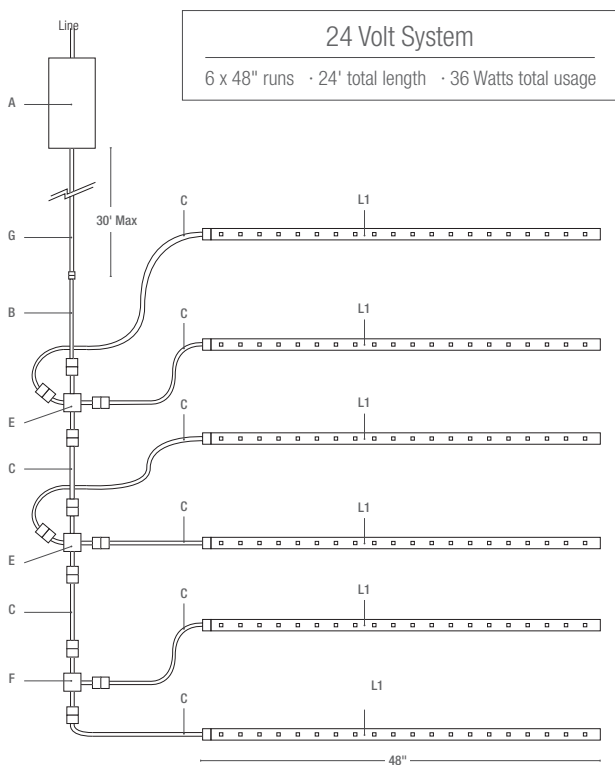


Flexible Power Cord
NRA-6035W/6 6'
NRA-6035W/10 10'

NEW! **NATL-302** 24V 5" Splitter

Use with NATL-530HW, 560HW to connect to NUSP-Jbox

12V & 24V LED TAPE LIGHT STANDARD & 24V SIDE-LIT SAMPLE LAYOUT



	DESCRIPTION	ITEM #
A1	24V 60W Dimmable Magnetic Power Supply - Hardwire	NMTD-60/24D
B	9" Power Line Interconnector (one included with each Tape Light roll)	NATL-509
C	2" Interconnection Cable 6" Interconnection Cable 18" Interconnection Cable 36" Interconnection Cable 72" Interconnection Cable	NATL-202 NATL-206 NATL-218 NATL-236 NATL-272
E	"X" Splitter Cable (1 in and 3 out)	NATL-301
F	"Y" Splitter Cable (1 in and 2 out)	NATL-300
G	30' Power Line Connector	NALTL-30
L1	48" LED Tape Light Segment (Each NUTP(1, 7 or 9)-16LED Roll contains (16) 12" detachable sections)	(1) NUTP(1, 7 or 9)-16LED(color) and (8) NUTP(1, 7 or 9)-LED(color)/12

*Note: All drivers require power line interconnector to connect to tape.