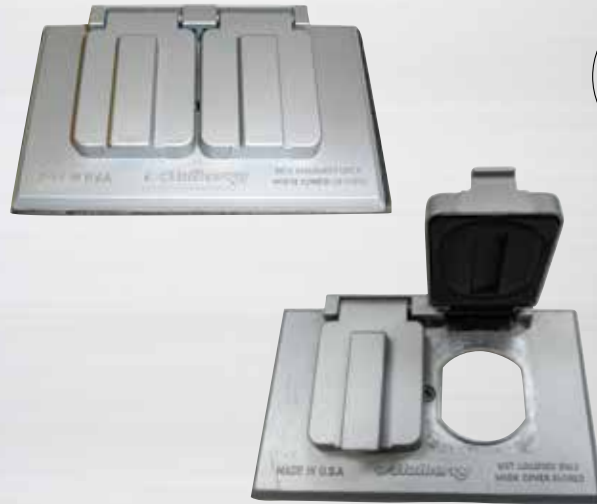


Self-Closing 1-Gang Covers

- Heavy-duty die-cast zinc.
- Choice of either horizontal or vertical orientation.
- Gaskets and screws included.
- Duplex covers accept all standard duplex receptacles and combination devices.
- Single receptacle covers accept all standard single receptacles and combination devices.
- UL Listed for the United States and Canada.
- All of the covers on this page are made in the U.S.A.



Catalog No.	Opening	Orientation	Color	Carton Quantity	Weight per 100 units
30451**	GFI	Horizontal	Gray	25	44 lbs.
30451W**	GFI	Horizontal	White	25	44 lbs.
30451Z**	GFI	Horizontal	Bronze	25	44 lbs.
30501†	Duplex	Horizontal	Gray	25	40 lbs.
30501U†	Duplex	Horizontal	Natural Cast	25	40 lbs.
30501W†	Duplex	Horizontal	White	25	40 lbs.
30501Z†	Duplex	Horizontal	Bronze	25	40 lbs.
30505	1.405" Single	Horizontal	Gray	25	30 lbs.
30505W	1.405" Single	Horizontal	White	25	30 lbs.
30505Z	1.405" Single	Horizontal	Bronze	25	30 lbs.
30507	1.620"	Horizontal	Gray	25	30 lbs.
30509	1.405" Single	Vertical	Gray	25	30 lbs.
30509W	1.405" Single	Vertical	White	25	30 lbs.
30509Z	1.405" Single	Vertical	Bronze	25	30 lbs.
30550*	Duplex	Vertical	Gray	25	36 lbs.
30550W*	Duplex	Vertical	White	25	36 lbs.
30550Z*	Duplex	Vertical	Bronze	25	36 lbs.
30552*	1.405" Single	Vertical	Gray	25	36 lbs.
30552W*	1.405" Single	Vertical	White	25	36 lbs.
30552Z*	1.405" Single	Vertical	Bronze	25	36 lbs.
30554*	GFI	Vertical	Gray	25	36 lbs.
30554W*	GFI	Vertical	White	25	36 lbs.
30554Z*	GFI	Vertical	Bronze	25	36 lbs.

* Solid aluminum base plate with heavy-duty die-cast lid.
30451 & 30501 Series are cULus Listed for use in the United States and Canada.

