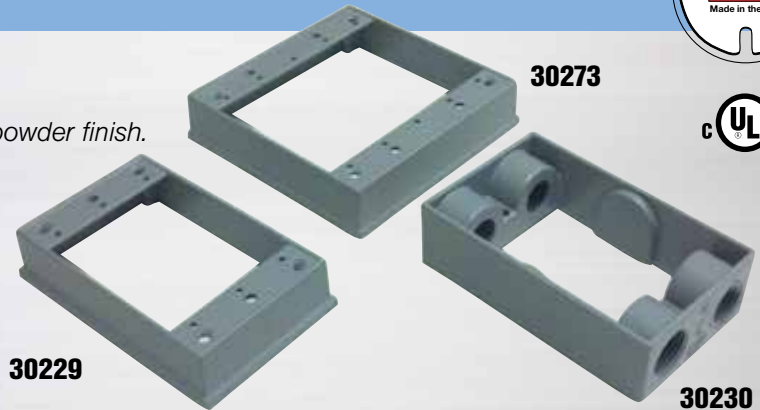


# Box Extensions

Suitable for wet locations



- Fit all universal-type weatherproof boxes.
- Heavy duty die-cast aluminum, .094" thick, with powder finish.
- UL Listed for the United States and Canada.
- Gasket and mounting screws included.
- All of the box extensions are made in the U.S.A.

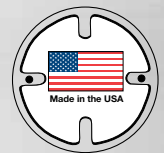


Catalog No.	No. of Gangs	Dimensions	Outlets	Cubic Capacity	Carton Quantity	Weight per 100 units
<b>30229</b>	1	2.75" x 4.5" x 1.0"	None	9.3"	25	28 lbs.
<b>30273</b>	2	4.5" x 4.5" x 1.0"	None	16.3"	10	50 lbs.
<b>30230</b>	1	2.75" x 4.5" x 1.25"	Four 1/2" outlets, 2 in each end	9.5"	25	62 lbs.
<b>30287</b>	1	2.75" x 4.5" x 1.25"	Four 3/4" outlets, 2 in each end	9.5"	25	62 lbs.
<b>30295</b>	1	2.75" x 4.5" x 1.25"	Six 1/2" outlets, 2 in each end and 1 in each side	9.5"	25	62 lbs.
<b>30296</b>	1	2.75" x 4.5" x 1.25"	Six 3/4" outlets, 2 in each end and 1 in each side	9.5"	25	62 lbs.

# Flanged Style Take-Off Extensions

Suitable for wet locations

- Provide an additional 10 cubic inches.
- Allow take-off in up to four directions for lighting, outlets, or switches.
- Heavy duty die-cast aluminum with powder finish.
- 2 close-up plugs, gaskets, and mounting screws included.
- UL Listed for the United States and Canada.



Catalog No.	No. of Outlets	Cubic Capacity	Carton Quantity	Weight per 100 units
<b>30274</b>	Four 1/2" outlets, 2 in each end	10.0"	10	70 lbs.
<b>30288</b>	Four 3/4" outlets, 2 in each end	10.0"	10	70 lbs.
<b>30275</b>	Six 1/2" outlets, 2 in each end and 1 in each side	10.0"	10	70 lbs.
<b>30289</b>	Six 3/4" outlets, 2 in each end and 1 in each side	10.0"	10	70 lbs.

