

Mulberry Single Gang Box

The most versatile weatherproof box in the industry

Superior Quality. U.S.-Made. ARRA Compliant.

Rotating Lugs

Permanently Attached Lugs rotate for maximum mounting versatility—available when needed or out of the way when not.

Superior Powder Finish

State-of-the-art powder coat paint finish assures maximum weatherability.

Available in Gray, White, Bronze or Black.



Cat. No. 30203

Easy Access Ground Screw

Tapped ground screw hole conveniently located along the surface of our mounting strap provides easier ground screw installation.

Heavy-Duty Mounting Straps

Reinforced and securely fastened mounting straps provide the most durable design in the industry.

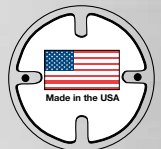
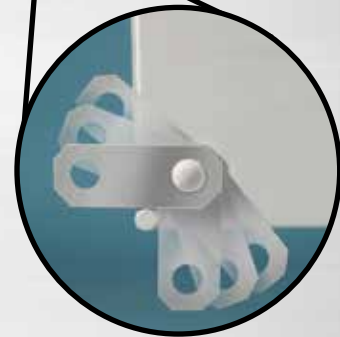
Patented mounting design allows strap to exceed all applicable UL pull-tests. (U.S. Patent No. 7,232,951)

Permanently Attached Lugs

No more detachable lugs!

Never drop, lose or install a lug again.

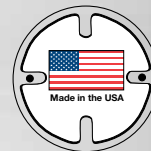
Speeds installation!



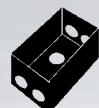
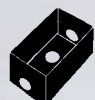
Single Gang Boxes

Suitable for wet locations

- All 1-gang boxes available with or without attached swivel lugs.
- 2.75" x 4.5" x 2.0" deep.
- Heavy duty die-cast aluminum, .094" thick, with powder finish.
- For use in all indoor and outdoor damp or wet locations, with all standard FS, outlet, lampholder or splice box covers.
- Ground screw and 2 close-up plugs supplied with each box.
- Pre-tapped ground screw hole.
- UL Listed.
- Comply with Federal Specification AA-50563.
- All of the boxes on pages B4 and B5 are made in the U.S.A.



With Permanently Attached Mounting Lugs

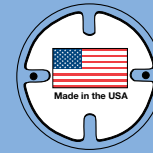


Catalog No.	No. Outlets	Location	Hub Size	Color	Lugs	Cubic Capacity	Carton Quantity	Weight per 100 units
30203	3	1 in each end, 1 in back	1/2"	Gray	Yes	18.3	25	52 lbs.
30203B	3	1 in each end, 1 in back	1/2"	Black	Yes	18.3	25	52 lbs.
30203W	3	1 in each end, 1 in back	1/2"	White	Yes	18.3	25	52 lbs.
30203Z	3	1 in each end, 1 in back	1/2"	Bronze	Yes	18.3	25	52 lbs.
30206	3	1 in each end, 1 in back	3/4"	Gray	Yes	18.3	25	60 lbs.
30206W	3	1 in each end, 1 in back	3/4"	White	Yes	18.3	25	60 lbs.
30206Z	3	1 in each end, 1 in back	3/4"	Bronze	Yes	18.3	25	60 lbs.
30209	4	2 in 1 end, 1 in the other, 1 in back	1/2"	Gray	Yes	18.0	25	60 lbs.
30209W	4	2 in 1 end, 1 in the other, 1 in back	1/2"	White	Yes	18.0	25	60 lbs.
30209Z	4	2 in 1 end, 1 in the other, 1 in back	1/2"	Bronze	Yes	18.0	25	60 lbs.
30212	4	2 in 1 end, 1 in the other, 1 in back	3/4"	Gray	Yes	18.0	25	58 lbs.
30212W	4	2 in 1 end, 1 in the other, 1 in back	3/4"	White	Yes	18.0	25	58 lbs.
30212Z	4	2 in 1 end, 1 in the other, 1 in back	3/4"	Bronze	Yes	18.0	25	58 lbs.
30215	5	2 in each end, 1 in back	1/2"	Gray	Yes	18.0	25	60 lbs.
30215W	5	2 in each end, 1 in back	1/2"	White	Yes	18.0	25	60 lbs.
30215Z	5	2 in each end, 1 in back	1/2"	Bronze	Yes	18.0	25	60 lbs.
30218	5	2 in each end, 1 in back	3/4"	Gray	Yes	18.0	25	56 lbs.
30221	5	1 in each end, 1 each side, 1 in back	1/2"	Gray	Yes	18.0	25	60 lbs.
30224	5	1 in each end, 1 each side, 1 in back	3/4"	Gray	Yes	18.0	25	58 lbs.
30227	6	1 in each end, 2 in 1 side, 1 in other side, 1 in back	1/2"	Gray	Yes	18.0	25	62 lbs.
30228	6	1 in each end, 2 in 1 side, 1 in other side, 1 in back	3/4"	Gray	Yes	18.0	25	58 lbs.

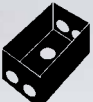
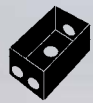
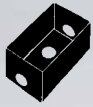


Single Gang Boxes

Suitable for wet locations



Without Mounting Lugs

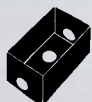
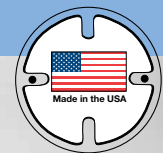


Catalog No.	No. Outlets	Location	Hub Size	Color	Lugs	Cubic Capacity	Carton Quantity	Weight per 100 units
30201	3	1 in each end, 1 in back	1/2"	Gray	No	18.3	25	52 lbs.
30201B	3	1 in each end, 1 in back	1/2"	Black	No	18.3	25	52 lbs.
30201W	3	1 in each end, 1 in back	1/2"	White	No	18.3	25	52 lbs.
30201Z	3	1 in each end, 1 in back	1/2"	Bronze	No	18.3	25	52 lbs.
30204	3	1 in each end, 1 in back	3/4"	Gray	No	18.3	25	60 lbs.
30204W	3	1 in each end, 1 in back	3/4"	White	No	18.3	25	60 lbs.
30204Z	3	1 in each end, 1 in back	3/4"	Bronze	No	18.3	25	60 lbs.
30207	4	2 in 1 end, 1 in the other, 1 in back	1/2"	Gray	No	18	25	60 lbs.
30207W	4	2 in 1 end, 1 in the other, 1 in back	1/2"	White	No	18	25	60 lbs.
30207Z	4	2 in 1 end, 1 in the other, 1 in back	1/2"	Bronze	No	18	25	60 lbs.
30210	4	2 in 1 end, 1 in the other, 1 in back	3/4"	Gray	No	18	25	58 lbs.
30210W	4	2 in 1 end, 1 in the other, 1 in back	3/4"	White	No	18	25	58 lbs.
30210Z	4	2 in 1 end, 1 in the other, 1 in back	3/4"	Bronze	No	18	25	58 lbs.
30213	5	2 in each end, 1 in back	1/2"	Gray	No	18	25	60 lbs.
30213W	5	2 in each end, 1 in back	1/2"	White	No	18	25	60 lbs.
30213Z	5	2 in each end, 1 in back	1/2"	Bronze	No	18	25	60 lbs.
30216	5	2 in each end, 1 in back	3/4"	Gray	No	18	25	56 lbs.
30219	5	1 in each end, 1 each side, 1 in back	1/2"	Gray	No	18	25	60 lbs.
30222	5	1 in each end, 1 each side, 1 in back	3/4"	Gray	No	18	25	58 lbs.
30226	6	1 in each end, 2 in 1 side, 1 in other side, 1 in back	1/2"	Gray	No	18	25	62 lbs.

One Gang Deep Boxes

Suitable for wet locations

- All 1-gang deep boxes come with detachable lugs, 2 close-up plugs, and self-tapping ground screw.
- 2.75" x 4.5" x 2.625" deep.
- Heavy duty die-cast aluminum, .094" thick, with powder finish.
- UL Listed for the United States and Canada.
- Ground screw hole is in bottom of box.



Catalog No.	No. Outlets	Location	Hub Size	Color	Cubic Capacity	Carton Quantity	Weight per 100 units
30583	3	1 in each end, 1 in back	1/2"	Gray	24.0	10	90 lbs.
30584	3	1 in each end, 1 in back	3/4"	Gray	24.0	10	90 lbs.
30589	3	1 in each end, 1 in back	1"	Gray	24.0	10	90 lbs.
30586	4	2 in 1 end, 1 in the other, 1 in back	1/2"	Gray	24.0	10	90 lbs.
30587	4	2 in 1 end, 1 in the other, 1 in back	3/4"	Gray	24.0	10	90 lbs.

