

Iron Fittings & Steel Nipples



Mueller boasts an extensive line of black and galvanized malleable iron fittings and steel nipples. Galvanized items are coated for water applications and meet low lead requirements. Fittings are offered from 1/8" – 6" in diameter. Each fitting has the Mueller brand cast into the body, a sign of assured 100% quality inspection and testing.



- Malleable iron fittings meet material: ANSI/ASTM A-197; dimensions: ANSI/ASME B.16.3, B-16.14, B16-39 and Threads: ANSI B1.20.1
- Steel nipples/Pre-Cut Pipe meet material: ANSI/ASTM A.733.A5320; Threads: ANSI B1.20.1
- NAFTA approved Steel Nipples

45° ELBOW

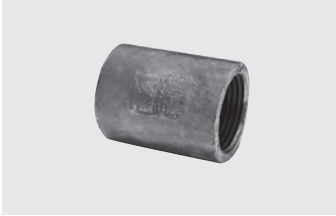
MALLEABLE IRON



Galvanized Part No.	Black Part No.	Size	Inner/Master Carton Qty.	Master Weight (lbs.)
510-200	520-200	1/8"	50/600	45
510-201	520-201	1/4"	35/420	46
510-202	520-202	3/8"	50/300	47
510-203	520-203	1/2"	50/200	45
510-204	520-204	3/4"	40/120	42
510-205	520-205	1"	20/60	35
510-206	520-206	1-1/4"	20/80	68
510-207	520-207	1-1/2"	15/60	67
510-208	520-208	2"	9/36	65
510-209	520-209	2-1/2"	12/24	69
510-210	520-210	3"	5/15	68
510-211	520-211	4"	3/6	45
510-213	520-213	6"	NA/2	36

COUPLING • MERCHANT

MALLEABLE IRON



Galvanized Part No.	Black Part No.	Size	Inner/Master Carton Qty.	Master Weight (lbs.)
511-220	521-220	1/8"	60/720	23
511-221	521-221	1/4"	60/720	54
511-222	521-222	3/8"	50/600	58
511-223	521-223	1/2"	40/480	101
511-224	521-224	3/4"	50/300	85
511-225	521-225	1"	25/150	50
511-226	521-226	1-1/4"	16/128	64
511-227	521-227	1-1/2"	18/72	44
511-228	521-228	2"	12/48	40
511-229	—	2-1/2"	NA/16	40
511-230	—	3"	NA/12	41
511-231	—	4"	NA/7	31

CAP

MALLEABLE IRON



Galvanized Part No.	Black Part No.	Size	Inner/Master Carton Qty.	Master Weight (lbs.)
511-400	521-400	1/8"	100/1200	42
511-401	521-401	1/4"	75/900	56
511-402	521-402	3/8"	60/720	64
511-403	521-403	1/2"	75/450	58
511-404	521-404	3/4"	40/240	51
511-405	521-405	1"	35/140	46
511-406	521-406	1-1/4"	25/100	49
511-407	521-407	1-1/2"	25/75	47
511-408	521-408	2"	18/54	51
511-409	521-409	2-1/2"	NA/24	38
511-410	521-410	3"	NA/16	38
511-411	521-411	4"	NA/10	41
511-413	521-413	6"	NA/5	44

PLUG

MALLEABLE IRON



Galvanized Part No.	Black Part No.	Size	Inner/Master Carton Qty.	Master Weight (lbs.)
511-800	521-800	1/8"	225/2700	52
511-801	521-801	1/4"	150/1800	54
511-802	521-802	3/8"	100/1200	63
511-803	521-803	1/2"	25/600	51
511-804	521-804	3/4"	15/360	50
511-805	521-805	1"	20/240	59
511-806	521-806	1-1/4"	40/120	48
511-807	521-807	1-1/2"	30/90	48
511-808	521-808	2"	30/60	50
511-809	521-809	2-1/2"	NA/32	37
511-810	521-810	3"	NA/24	43
511-811	521-811	4"	NA/16	45
511-813	521-813	6"	NA/10	71

