

Iron Fittings & Steel Nipples



Mueller boasts an extensive line of black and galvanized malleable iron fittings and steel nipples. Galvanized items are coated for water applications and meet low lead requirements. Fittings are offered from 1/8" – 6" in diameter. Each fitting has the Mueller brand cast into the body, a sign of assured 100% quality inspection and testing.



- Malleable iron fittings meet material: ANSI/ASTM A-197; dimensions: ANSI/ASME B.16.3, B-16.14, B16-39 and Threads: ANSI B1.20.1
- Steel nipples/Pre-Cut Pipe meet material: ANSI/ASTM A.733.A5320; Threads: ANSI B1.20.1
- NAFTA approved Steel Nipples

45° ELBOW

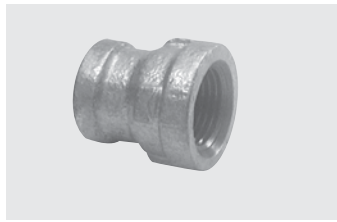
MALLEABLE IRON



Galvanized Part No.	Black Part No.	Size	Inner/Master Carton Qty.	Master Weight (lbs.)
510-200	520-200	1/8"	50/600	45
510-201	520-201	1/4"	35/420	46
510-202	520-202	3/8"	50/300	47
510-203	520-203	1/2"	50/200	45
510-204	520-204	3/4"	40/120	42
510-205	520-205	1"	20/60	35
510-206	520-206	1-1/4"	20/80	68
510-207	520-207	1-1/2"	15/60	67
510-208	520-208	2"	9/36	65
510-209	520-209	2-1/2"	12/24	69
510-210	520-210	3"	5/15	68
510-211	520-211	4"	3/6	45
510-213	520-213	6"	NA/2	36

COUPLING • REDUCING

MALLEABLE IRON



Galvanized Part No.	Black Part No.	Size	Inner/Master Carton Qty.	Master Weight (lbs.)
511-310	521-310	1/4" x 1/8"	25/600	49
511-320	521-320	3/8" x 1/8"	30/360	38
511-321	521-321	3/8" x 1/4"	30/360	41
511-330	521-330	1/2" x 1/8"	50/300	41
511-331	521-331	1/2" x 1/4"	50/300	46
511-332	521-332	1/2" x 3/8"	40/240	41
511-340	521-340	3/4" x 1/8"	35/210	46
511-341	521-341	3/4" x 1/4"	30/180	41
511-342	521-342	3/4" x 3/8"	30/180	65
511-343	521-343	3/4" x 1/2"	60/180	49
511-351	521-351	1" x 1/4"	25/200	69
511-352	521-352	1" x 3/8"	40/120	44
511-353	521-353	1" x 1/2"	30/120	48
511-354	521-354	1" x 3/4"	30/120	55
511-362	521-362	1-1/4" x 3/8"	50/100	52
511-363	521-363	1-1/4" x 1/2"	25/75	40
511-364	521-364	1-1/4" x 3/4"	25/75	45
511-365	521-365	1-1/4" x 1"	25/75	50
511-372	521-372	1-1/2" x 3/8"	20/120	48
511-373	521-373	1-1/2" x 1/2"	20/60	42
511-374	521-374	1-1/2" x 3/4"	30/60	44
511-375	521-375	1-1/2" x 1"	30/60	50
511-376	521-376	1-1/2" x 1-1/4"	25/50	47
511-383	521-383	2" x 1/2"	21/42	47
511-384	521-384	2" x 3/4"	21/42	48
511-385	521-385	2" x 1"	14/28	35
511-386	521-386	2" x 1-1/4"	14/28	37
511-387	521-387	2" x 1-1/2"	14/28	38
511-394	521-394	2 1/2" x 3/4"	NA/20	35
511-395	521-395	2-1/2" x 1"	16/32	59
511-396	521-396	2-1/2" x 1-1/4"	16/32	60
511-397	521-397	2-1/2" x 1-1/2"	16/32	67
511-398	521-398	2-1/2" x 2"	16/32	66
511-304	521-304	3" x 3/4"	NA/24	58
511-305	521-305	3" x 1"	12/24	63
511-306	521-306	3" x 1-1/4"	12/24	64
511-307	521-307	3" x 1-1/2"	12/24	68
511-308	521-308	3" x 2"	7/14	42
511-309	521-309	3" x 2-1/2"	NA/12	41
511-325	521-325	4" x 1"	NA/9	36
511-326	521-326	4" x 1-1/4"	NA/9	41
511-327	521-327	4" x 1-1/2"	NA/9	39
511-328	521-328	4" x 2"	NA/9	43
511-329	521-329	4" x 2-1/2"	NA/9	47
511-300	521-300	4" x 3"	NA/7	40
511-323	521-323	6" x 4"	NA/4	38
511-322	521-322	6" x 3"	NA/4	41

TUBE & PIPE

METAL FITTINGS & NIPPLES

PLASTIC FITTINGS & NIPPLES

VALVES

FAUCETS & BATH ACCESSORIES

SPECIALTIES

