

Iron Fittings & Steel Nipples



Mueller boasts an extensive line of black and galvanized malleable iron fittings and steel nipples. Galvanized items are coated for water applications and meet low lead requirements. Fittings are offered from 1/8" – 6" in diameter. Each fitting has the Mueller brand cast into the body, a sign of assured 100% quality inspection and testing.



- Malleable iron fittings meet material: ANSI/ASTM A-197; dimensions: ANSI/ASME B.16.3, B-16.14, B16-39 and Threads: ANSI B1.20.1
- Steel nipples/Pre-Cut Pipe meet material: ANSI/ASTM A.733.A5320; Threads: ANSI B1.20.1
- NAFTA approved Steel Nipples

45° ELBOW

MALLEABLE IRON



Galvanized Part No.	Black Part No.	Size	Inner/Master Carton Qty.	Master Weight (lbs.)
510-200	520-200	1/8"	50/600	45
510-201	520-201	1/4"	35/420	46
510-202	520-202	3/8"	50/300	47
510-203	520-203	1/2"	50/200	45
510-204	520-204	3/4"	40/120	42
510-205	520-205	1"	20/60	35
510-206	520-206	1-1/4"	20/80	68
510-207	520-207	1-1/2"	15/60	67
510-208	520-208	2"	9/36	65
510-209	520-209	2-1/2"	12/24	69
510-210	520-210	3"	5/15	68
510-211	520-211	4"	3/6	45
510-213	520-213	6"	NA/2	36

TEE • REDUCING

MALLEABLE IRON



Galvanized Part No.	Black Part No.	Size	Inner/Master Carton Qty.	Master Weight (lbs.)
510-229	520-229	1/4" x 1/8"	50/300	38
510-220	520-220	3/8" x 1/8"	60/240	40
510-221	520-221	3/8" x 1/4"	60/240	55
510-330	520-330	1/2" x 1/8"	60/180	46
510-331	520-331	1/2" x 1/4"	50/150	41
510-322	520-322	1/2" x 3/8"	45/135	40
510-334	520-334	1/2" x 1/2" x 3/4"	45/90	39
510-335	520-335	1/2" x 1/2" x 1"	30/120	64
510-444	520-444	3/4" x 1/4"	50/100	40
510-442	520-442	3/4" x 3/8"	45/90	39
510-743	520-743	3/4" x 1/2"	45/90	45
510-433	520-433	3/4" x 1/2" x 1/2"	45/90	40
510-434	520-434	3/4" x 1/2" x 3/4"	45/90	46
510-435	520-435	3/4" x 1/2" x 1"	45/90	59
510-445	520-445	3/4" x 3/4" x 1"	25/50	35
510-446	520-446	3/4" x 3/4" x 1-1/4"	18/72	63
510-551	520-551	1" x 1/4"	25/100	61
510-552	520-552	1" x 3/8"	20/60	41
510-753	520-753	1" x 1/2"	20/60	43
510-754	520-754	1" x 3/4"	25/50	40
510-533	520-533	1" x 1/2" x 1/2"	20/120	67
510-534	520-534	1" x 1/2" x 3/4"	25/100	61
510-793	520-793	1" x 1/2" x 1"	20/60	46
510-543	520-543	1" x 3/4" x 1/2"	25/100	62
510-544	520-544	1" x 3/4" x 3/4"	25/50	35
510-545	—	1" x 3/4" x 1"	25/50	39
—	520-794	1" x 3/4" x 1"	25/50	39
510-556	520-556	1" x 1" x 1-1/4"	18/36	38
510-557	520-557	1" x 1" x 1-1/2"	13/52	61
510-558	520-558	1" x 1" x 2"	9/36	64
510-662	520-662	1-1/4" x 3/8"	16/64	53
510-663	520-663	1-1/4" x 1/2"	16/64	60
510-664	520-664	1-1/4" x 3/4"	18/36	38
510-765	520-765	1-1/4" x 1"	16/32	38
510-633	520-633	1-1/4" x 1/2" x 1/2"	16/64	46
510-634	520-634	1-1/4" x 1/2" x 3/4"	18/72	54
510-635	520-635	1-1/4" x 1/2" x 1"	18/72	58
510-636	520-636	1-1/4" x 1/2" x 1-1/4"	16/64	68
510-643	520-643	1-1/4" x 3/4" x 1/2"	18/72	60
510-644	520-644	1-1/4" x 3/4" x 3/4"	18/72	61
510-645	520-645	1-1/4" x 3/4" x 1"	16/64	64
510-646	520-646	1-1/4" x 3/4" x 1-1/4"	16/32	36
510-653	520-653	1-1/4" x 1" x 1/2"	18/72	58
510-654	520-654	1-1/4" x 1" x 3/4"	18/72	66
510-655	520-655	1-1/4" x 1" x 1"	18/36	37
510-656	520-656	1-1/4" x 1" x 1-1/4"	15/30	45
510-657	520-657	1-1/4" x 1" x 1-1/2"	15/30	65
510-658	520-658	1-1/4" x 1-1/4" x 1-1/2"	11/44	69
510-659	520-659	1-1/4" x 1-1/4" x 2"	8/32	56
510-772	520-772	1-1/2" x 3/8"	18/36	42
510-773	520-773	1-1/2" x 1/2"	18/36	43
510-774	520-774	1-1/2" x 3/4"	15/30	40
510-775	—	1-1/2" x 1"	13/26	71
510-776	520-776	1-1/2" x 1-1/4"	N/A/23	39
—	520-766	1-1/2" x 1"	13/52	76
510-734	520-734	1-1/2" x 1/2" x 3/4"	15/60	58
510-735	520-735	1-1/2" x 1/2" x 1"	13/52	53
510-736	520-736	1-1/2" x 1/2" x 1-1/4"	11/44	57
510-737	520-737	1-1/2" x 1/2" x 1-1/2"	18/36	49

TUBE & PIPE

METAL FITTINGS & NIPPLES

PLASTIC FITTINGS & NIPPLES

VALVES

FAUCETS & BATH ACCESSORIES

SPECIALTIES



TEE • REDUCING continued

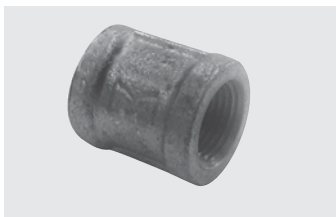
MALLEABLE IRON



Galvanized Part No.	Black Part No.	Size	Inner/Master Carton Qty.	Master Weight (lbs.)
510-748	520-748	1-1/2" x 3/4" x 1/2"	15/60	58
510-744	520-744	1-1/2" x 3/4" x 3/4"	15/60	61
510-746	520-746	1-1/2" x 3/4" x 1-1/4"	11/44	57
510-747	520-747	1-1/2" x 3/4" x 1-1/2"	15/30	43
510-758	520-758	1-1/2" x 1" x 1/2"	13/52	58
510-759	520-759	1-1/2" x 1" x 3/4"	13/52	70
510-755	520-755	1-1/2" x 1" x 1"	13/52	61
510-756	520-756	1-1/2" x 1" x 1-1/4"	11/44	61
510-757	520-757	1-1/2" x 1" x 1-1/2"	13/26	39
510-763	520-763	1-1/2" x 1-1/4" x 1/2"	11/44	50
510-764	520-764	1-1/2" x 1-1/4" x 3/4"	11/44	52
510-767	520-767	1-1/2" x 1-1/4" x 1-1/2"	11/44	68
510-768	520-768	1-1/2" x 1-1/4" x 1"	11/44	59
510-769	520-769	1-1/2" x 1-1/4" x 1-1/4"	11/44	66
510-783	520-783	2" x 1/2"	10/40	69
510-884	520-884	2" x 3/4"	9/36	69
510-785	520-785	2" x 1"	9/18	37
510-886	520-886	2" x 1-1/4"	8/16	36
510-787	520-787	2" x 1-1/2"	8/16	39
510-778	520-778	2" x 1-1/2" x 2"	8/32	66
510-838	520-838	2" x 1/2" x 2"	8/32	66
510-844	520-844	2" x 3/4" x 3/4"	9/36	47
510-848	520-848	2" x 3/4" x 2"	8/32	68
510-855	520-855	2" x 1" x 1"	9/36	57
510-857	520-857	2" x 1" x 1-1/2"	8/32	66
510-858	520-858	2" x 1" x 2"	10/20	45
510-865	520-865	2" x 1-1/4" x 1"	8/32	53
510-866	520-866	2" x 1-1/4" x 1-1/4"	8/32	58
510-867	520-867	2" x 1-1/4" x 1-1/2"	8/32	63
510-868	520-868	2" x 1-1/4" x 2"	8/16	39
510-874	520-874	2" x 1-1/2" x 3/4"	8/32	50
510-875	520-875	2" x 1-1/2" x 1"	8/32	57
510-876	520-876	2" x 1-1/2" x 1-1/4"	8/32	61
510-877	520-877	2" x 1-1/2" x 1-1/2"	8/16	35
510-878	520-878	2" x 1-1/2" x 2"	8/16	37
510-889	520-889	2" x 2" x 2-1/2"	10/20	68
510-993	520-993	2-1/2" x 1/2"	10/20	62
510-994	520-994	2-1/2" x 3/4"	10/20	60

COUPLING

MALLEABLE IRON



Galvanized Part No.	Black Part No.	Size	Inner/Master Carton Qty.	Master Weight (lbs.)
511-200	521-200	1/8"	60/720	43
511-201	521-201	1/4"	40/480	42
511-202	521-202	3/8"	50/300	39
511-203	521-203	1/2"	60/240	47
511-204	521-204	3/4"	50/150	47
511-205	521-205	1"	25/75	37
511-206	521-206	1-1/4"	32/64	45
511-207	521-207	1-1/2"	18/72	69
511-208	521-208	2"	12/24	36
511-209	521-209	2-1/2"	NA/16	43
511-210	521-210	3"	NA/12	46
511-211	521-211	4"	NA/7	46
511-213	521-213	6"	2/4	50

