

ABS DWV Fittings



Mueller's ABS DWV fittings are made to the most exacting specifications to ensure the best fit in the industry. Each fitting offers excellent rigidity, corrosion and chemical resistance while smooth walls prevent scaling and provide for free flow. Our precise manufacturing processes and stringent quality control ensure that our fittings perform flawlessly piece after piece. Fittings are packaged to common industry carton quantities and dimensions plus utilize an intuitive, recognizable style number system.

- Meets ASTM standard D2661 and D3311
- Made in the USA



TUBE & PIPE

METAL FITTINGS & NIPPLES

PLASTIC FITTINGS & NIPPLES

VALVES

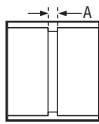
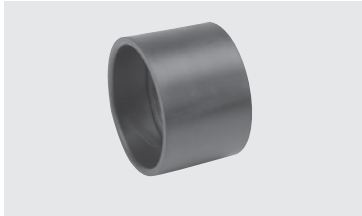
FAUCETS & BATH ACCESSORIES

SPECIALTIES

COUPLING

ABS DWV

A100

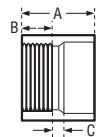
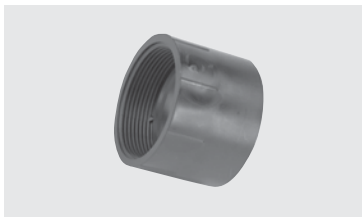


CONNECTION H x H	CHARLOTTE STYLE 100			NIBCO STYLE 5801		Dimensions				
	Part Number	Ctn Qty	Approx Net Wt.	A	B	C	D	E	F	
1-1/4"	02932	50	.06	1/8						
1-1/2"	02933	100	.07	1/8						
2"	02934	100	.10	1/8						
3"	02935	60	.33	3/16						
4"	02936	25	.58	1/4						
6"	03143	15	1.45	1/4						

ADAPTER • FEMALE

ABS DWV

A101



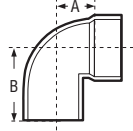
CONNECTION H x FPT	CHARLOTTE STYLE 101			NIBCO STYLE 5803		Dimensions				
	Part Number	Ctn Qty	Approx Net Wt.	A	B	C	D	E	F	
1-1/4"	03006	50	.07	1-5/8	15/16	1/4				
1-1/2"	02866	100	.07	1-5/8	15/16	1/4				
2"	02867	100	.11	1-7/8	1	1/4				
3"	02869	30	.37	3-1/32	1-27/32	5/16				
4"	03396	10	.58	3-3/32	1-5/16	11/32				
6"	03147	10	1.40	4-3/4	1-3/4	1/4				



ELBOW • VENT ELL • STREET

ABS DWV

A333

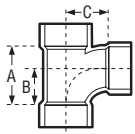


CONNECTION SP x H	CHARLOTTE STYLE 333			NIBCO STYLE 5807-2-V					
	Part Number	Ctn Qty	Approx Net Wt.	Dimensions					
Size				A	B	C	D	E	F
1-1/2"	03088	25	.13	1-3/16	1-7/8				
2"	03089	20	.20	1-1/2	2-1/4				
3"	03090	10	.58	1-9/16	2-5/8				

TEE • SANITARY

ABS DWV

A400

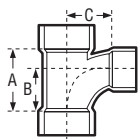


CONNECTION ALL HUB	CHARLOTTE STYLE 400			NIBCO STYLE 5811					
	Part Number	Ctn Qty	Approx Net Wt.	Dimensions					
Size				A	B	C	D	E	F
1-1/4"	02751	50	.17	2-5/16	1-9/16	1-9/16			
1-1/2"	02752	100	.23	2-3/4	1-3/4	1-3/4			
2"	02753	35	.36	3-11/16	2-5/16	2-5/16			
3"	02754	30	1.04	4-7/8	3-1/16	3-1/16			
4"	02755	5	1.81	6-1/8	3-7/8	3-7/8			
6"	02756	5	4.67	8-1/2	5	5			

TEE • SANITARY • REDUCING

ABS DWV

A401



CONNECTION ALL HUB	CHARLOTTE STYLE 401			NIBCO STYLE 5811					
	Part Number	Ctn Qty	Approx Net Wt.	Dimensions					
Size				A	B	C	D	E	F
1-1/2" x 1-1/4" x 1-1/4"	02759	20	.19	2-1/2	1-1/2	1-11/16			
1-1/2" x 1-1/4" x 1-1/2"	02762	20	.23	2-3/4	1-3/4	1-3/4			
1-1/2" x 1-1/2" x 1-1/4"	02757	20	.20	2-1/2	1-11/16	1-13/16			
2" x 1-1/2" x 1-1/2"	02761	25	.29	3-1/8	1-15/16	2-3/16			
2" x 1-1/2" x 2"	02760	25	.34	3-11/16	2-5/16	2-5/16			
2" x 2" x 1-1/2"	02758	50	.30	3-1/8	1-15/16	2-3/16			
3" x 3" x 1-1/2"	02764	20	.62	2-11/16	1-3/4	2-9/16			
3" x 3" x 2"	02763	10	.71	3-5/16	2-1/8	2-7/8			
4" x 4" x 2"	02765	10	1.03	3-3/16	2-1/16	3-5/16			
4" x 4" x 3"	02766	10	1.42	4-3/4	3	3-9/16			
6" x 6" x 4"	02768	6	3.06	5-7/8	6-5/8	4-1/2			

