

ABS DWV Fittings



Mueller's ABS DWV fittings are made to the most exacting specifications to ensure the best fit in the industry. Each fitting offers excellent rigidity, corrosion and chemical resistance while smooth walls prevent scaling and provide for free flow. Our precise manufacturing processes and stringent quality control ensure that our fittings perform flawlessly piece after piece. Fittings are packaged to common industry carton quantities and dimensions plus utilize an intuitive, recognizable style number system.

- Meets ASTM standard D2661 and D3311
- Made in the USA

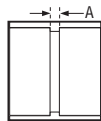
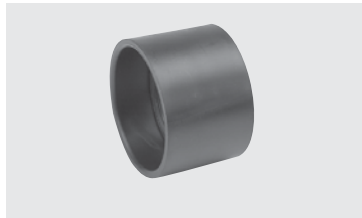


TUBE & PIPE
METAL FITTINGS & NIPPLES
PLASTIC FITTINGS & NIPPLES

COUPLING

ABS DWV

A100



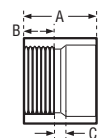
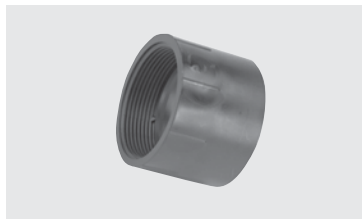
CONNECTION H x H	CHARLOTTE STYLE 100			NIBCO STYLE 5801		Dimensions				
	Part Number	Ctn Qty	Approx Net Wt.	A	B	C	D	E	F	
1-1/4"	02932	50	.06	1/8						
1-1/2"	02933	100	.07	1/8						
2"	02934	100	.10	1/8						
3"	02935	60	.33	3/16						
4"	02936	25	.58	1/4						
6"	03143	15	1.45	1/4						

VALVES

ADAPTER • FEMALE

ABS DWV

A101



CONNECTION H x FPT	CHARLOTTE STYLE 101			NIBCO STYLE 5803		Dimensions				
	Part Number	Ctn Qty	Approx Net Wt.	A	B	C	D	E	F	
1-1/4"	03006	50	.07	1-5/8	15/16	1/4				
1-1/2"	02866	100	.07	1-5/8	15/16	1/4				
2"	02867	100	.11	1-7/8	1	1/4				
3"	02869	30	.37	3-1/32	1-27/32	5/16				
4"	03396	10	.58	3-3/32	1-5/16	11/32				
6"	03147	10	1.40	4-3/4	1-3/4	1/4				

FAUCETS & BATH ACCESSORIES

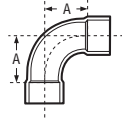
SPECIALTIES



ELBOW • LONG SWEEP • 1/4 BEND

ABS DWV

A304

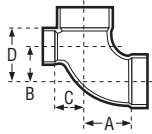


CONNECTION H x H	CHARLOTTE STYLE 304		NIBCO STYLE 5807-LT		Dimensions					
	Part Number	Ctn Qty	Approx Net Wt.	A	B	C	D	E	F	
Size										
1-1/4"	02870	50	.17	2-1/4						
1-1/2"	02871	50	.21	2-3/4						
2"	02872	25	.33	3-1/4						
3"	02873	10	.93	4-1/16						
4"	02874	5	1.60	4-15/16						

ELBOW • LONG SWEEP • 1/4 BEND • W/HIGH INLET

ABS DWV

A305

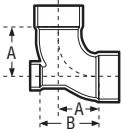


CONNECTION ALL HUB	CHARLOTTE STYLE N/A		NIBCO STYLE 5861		Dimensions					
	Part Number	Ctn Qty	Approx Net Wt.	A	B	C	D	E	F	
Size										
3" x 3" x 1-1/2"	03028	10	.95	4-1/16	2-1/4	1-9/16	3-5/8			
3" x 3" x 2"	03027	25	.96	4-1/16	2-1/4	1-9/16	4-1/16			

ELBOW • LONG SWEEP • 1/4 BEND • W/LOW INLET

ABS DWV

A307

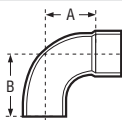


CONNECTION ALL HUB	CHARLOTTE STYLE N/A		NIBCO STYLE N/A		Dimensions					
	Part Number	Ctn Qty	Approx Net Wt.	A	B	C	D	E	F	
Size										
3" x 3" x 1-1/2"	03025	10	.94	4-1/16	4-3/4					
3" x 3" x 2"	03024	25	.97	4-1/16	4-15/16					

ELBOW • LONG SWEEP • 1/4 BEND • STREET

ABS DWV

A309



CONNECTION SP x H	CHARLOTTE STYLE 309		NIBCO STYLE 5807-2-LT		Dimensions					
	Part Number	Ctn Qty	Approx Net Wt.	A	B	C	D	E	F	
Size										
1-1/2"	03060	50	.21	2-1/4	2-15/16					
2"	03061	25	.29	3-1/4	4					
3"	03063	20	.89	4-1/16	5-9/16					

TUBE & PIPE

METAL FITTINGS & NIPPLES

PLASTIC FITTINGS & NIPPLES

VALVES

FAUCETS & BATH ACCESSORIES

SPECIALTIES

