

ABS DWV Fittings



Mueller's ABS DWV fittings are made to the most exacting specifications to ensure the best fit in the industry. Each fitting offers excellent rigidity, corrosion and chemical resistance while smooth walls prevent scaling and provide for free flow. Our precise manufacturing processes and stringent quality control ensure that our fittings perform flawlessly piece after piece. Fittings are packaged to common industry carton quantities and dimensions plus utilize an intuitive, recognizable style number system.



- Meets ASTM standard D2661 and D3311
- Made in the USA

TUBE & PIPE

METAL FITTINGS & NIPPLES

PLASTIC FITTINGS & NIPPLES

VALVES

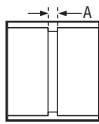
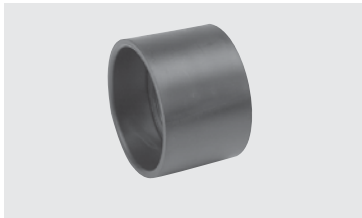
FAUCETS & BATH ACCESSORIES

SPECIALTIES

COUPLING

ABS DWV

A100

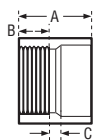
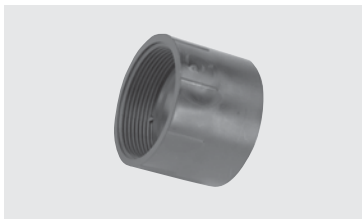


CONNECTION H x H	CHARLOTTE STYLE 100			NIBCO STYLE 5801		Dimensions				
	Part Number	Ctn Qty	Approx Net Wt.	A	B	C	D	E	F	
1-1/4"	02932	50	.06	1/8						
1-1/2"	02933	100	.07	1/8						
2"	02934	100	.10	1/8						
3"	02935	60	.33	3/16						
4"	02936	25	.58	1/4						
6"	03143	15	1.45	1/4						

ADAPTER • FEMALE

ABS DWV

A101



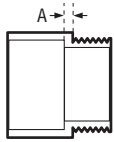
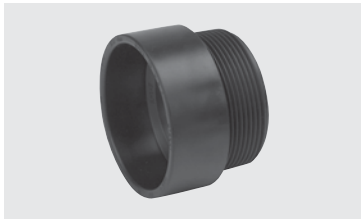
CONNECTION H x FPT	CHARLOTTE STYLE 101			NIBCO STYLE 5803		Dimensions				
	Part Number	Ctn Qty	Approx Net Wt.	A	B	C	D	E	F	
1-1/4"	03006	50	.07	1-5/8	15/16	1/4				
1-1/2"	02866	100	.07	1-5/8	15/16	1/4				
2"	02867	100	.11	1-7/8	1	1/4				
3"	02869	30	.37	3-1/32	1-27/32	5/16				
4"	03396	10	.58	3-3/32	1-5/16	11/32				
6"	03147	10	1.40	4-3/4	1-3/4	1/4				



ADAPTER • MALE

ABS DWV

A109

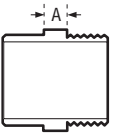


CONNECTION H x MPT	CHARLOTTE STYLE 109			NIBCO STYLE 5804		Dimensions					
	Part Number	Ctn Qty	Approx Net Wt.	A	B	C	D	E	F		
1-1/4"	02931	50	.05	3/16							
1-1/2"	02927	50	.06	3/16							
2"	02928	50	.10	3/16							
3"	02929	25	.33	3/8							
4"	02930	10	.45	3/8							
1-1/2" x 1-1/4"	02926	25	.07	3/16							

ADAPTER • MALE

ABS DWV

A111



CONNECTION SP x MPT	CHARLOTTE STYLE 111			NIBCO STYLE 5804-2		Dimensions					
	Part Number	Ctn Qty	Approx Net Wt.	A	B	C	D	E	F		
1-1/4"	03010	50	.06	5/32							
1-1/2"	03386	50	.07	5/32							
2"	03385	25	.08	5/32							
3"	03366	25	.28	3/8							

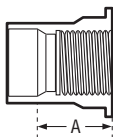
REDUCING

1-1/2" x 1-1/4"	03387	100	.07	5/16						
-----------------	-------	-----	-----	------	--	--	--	--	--	--

ADAPTER • TRAY PLUG

ABS DWV

A113



CONNECTION H x NPSM Threaded	CHARLOTTE STYLE N/A			NIBCO STYLE 5803-TPA		Dimensions					
	Part Number	Ctn Qty	Approx Net Wt.	A	B	C	D	E	F		
1-1/2"	03014	50	.15	1-7/8							

TUBE & PIPE

METAL FITTINGS & NIPPLES

PLASTIC FITTINGS & NIPPLES

VALVES

FAUCETS & BATH ACCESSORIES

SPECIALTIES

