

ABS DWV Fittings



Mueller's ABS DWV fittings are made to the most exacting specifications to ensure the best fit in the industry. Each fitting offers excellent rigidity, corrosion and chemical resistance while smooth walls prevent scaling and provide for free flow. Our precise manufacturing processes and stringent quality control ensure that our fittings perform flawlessly piece after piece. Fittings are packaged to common industry carton quantities and dimensions plus utilize an intuitive, recognizable style number system.

- Meets ASTM standard D2661 and D3311
- Made in the USA

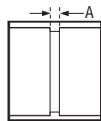
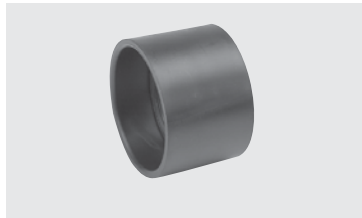


TUBE & PIPE
METAL FITTINGS & NIPPLES
PLASTIC FITTINGS & NIPPLES

COUPLING

ABS DWV

A100



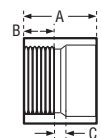
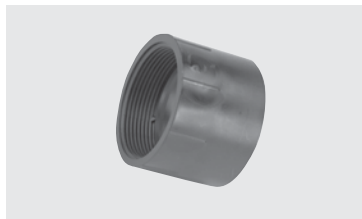
CONNECTION H x H	CHARLOTTE STYLE 100			NIBCO STYLE 5801		Dimensions				
	Part Number	Ctn Qty	Approx Net Wt.	A	B	C	D	E	F	
1-1/4"	02932	50	.06	1/8						
1-1/2"	02933	100	.07	1/8						
2"	02934	100	.10	1/8						
3"	02935	60	.33	3/16						
4"	02936	25	.58	1/4						
6"	03143	15	1.45	1/4						

VALVES

ADAPTER • FEMALE

ABS DWV

A101



CONNECTION H x FPT	CHARLOTTE STYLE 101			NIBCO STYLE 5803		Dimensions				
	Part Number	Ctn Qty	Approx Net Wt.	A	B	C	D	E	F	
1-1/4"	03006	50	.07	1-5/8	15/16	1/4				
1-1/2"	02866	100	.07	1-5/8	15/16	1/4				
2"	02867	100	.11	1-7/8	1	1/4				
3"	02869	30	.37	3-1/32	1-27/32	5/16				
4"	03396	10	.58	3-3/32	1-5/16	11/32				
6"	03147	10	1.40	4-3/4	1-3/4	1/4				

FAUCETS & BATH ACCESSORIES

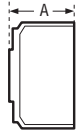
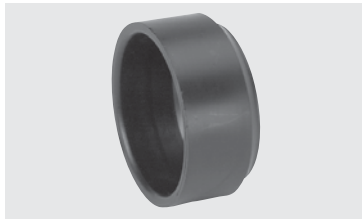
SPECIALTIES



PLUG • SLIP

ABS DWV

A106P



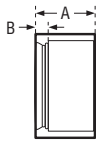
Size	CONNECTION SP			CHARLOTTE STYLE N/A		NIBCO STYLE 5826		Dimensions			
	Part Number	Ctn Qty	Approx Net Wt.	A	B	C	D	E	F		
1-1/2"	03055	25	.05	1-1/16							
2"	03056	50	.06	1-1/8							

BUSHING • FLUSH

ABS DWV

(STYLE #3)

A107



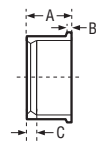
Size	CONNECTION SP x H			CHARLOTTE STYLE 107		NIBCO STYLE 5801-2-F		Dimensions			
	Part Number	Ctn Qty	Approx Net Wt.	A	B	C	D	E	F		
1-1/2" x 1-1/4"	02904	100	.04	1	3/16						
2" x 1-1/4"	02905	50	.10	1 1/16	5/16						
2" x 1-1/2"	02906	50	.08	1 1/16	5/16						
3" x 1-1/2"	02907	30	.26	1-1/2	7/8						
3" x 2"	02908	30	.26	1-1/2	3/4						
4" x 2"	02910	30	.45	2	1/4						
4" x 3"	02909	30	.34	1-3/4	1/4						

BUSHING • FLANGE • W/TUBE STOP

ABS DWV

(STYLE #1)

A107S



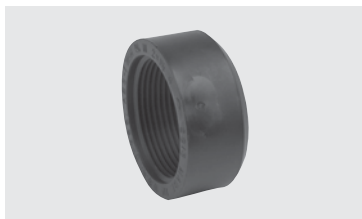
Size	CONNECTION SP x H			CHARLOTTE STYLE N/A		NIBCO STYLE N/A		Dimensions			
	Part Number	Ctn Qty	Approx Net Wt.	A	B	C	D	E	F		
6" x 4"	03144	10	1.41	3-1/2	1/2	1-3/4					

BUSHING • FLUSH (CLEANOUT ADAPTER)

ABS DWV

(STYLE #3)

A108



Size	CONNECTION SP x FPT			CHARLOTTE STYLE N/A		NIBCO STYLE N/A		Dimensions			
	Part Number	Ctn Qty	Approx Net Wt.	A	B	C	D	E	F		
1-1/2" x 1-1/4"	02912	50	.04	1							
2" x 1-1/2"	02913	50	.08	1 3/32							

TUBE & PIPE

METAL FITTINGS & NIPPLES

PLASTIC FITTINGS & NIPPLES

VALVES

FAUCETS & BATH ACCESSORIES

SPECIALTIES

