

# ABS DWV Fittings



Mueller's ABS DWV fittings are made to the most exacting specifications to ensure the best fit in the industry. Each fitting offers excellent rigidity, corrosion and chemical resistance while smooth walls prevent scaling and provide for free flow. Our precise manufacturing processes and stringent quality control ensure that our fittings perform flawlessly piece after piece. Fittings are packaged to common industry carton quantities and dimensions plus utilize an intuitive, recognizable style number system.

- Meets ASTM standard D2661 and D3311
- Made in the USA



TUBE & PIPE

METAL FITTINGS & NIPPLES

PLASTIC FITTINGS & NIPPLES

VALVES

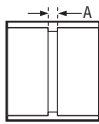
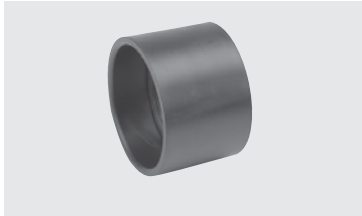
FAUCETS & BATH ACCESSORIES

SPECIALTIES

## COUPLING

## ABS DWV

### A100

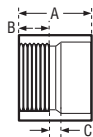
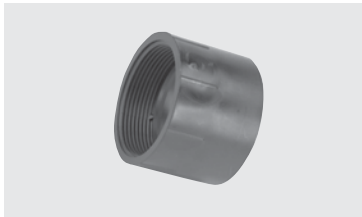


CONNECTION <b>H x H</b>	CHARLOTTE STYLE 100			NIBCO STYLE 5801		Dimensions				
	Part Number	Ctn Qty	Approx Net Wt.	A	B	C	D	E	F	
1-1/4"	02932	50	.06	1/8						
1-1/2"	02933	100	.07	1/8						
2"	02934	100	.10	1/8						
3"	02935	60	.33	3/16						
4"	02936	25	.58	1/4						
6"	03143	15	1.45	1/4						

## ADAPTER • FEMALE

## ABS DWV

### A101



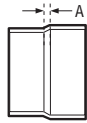
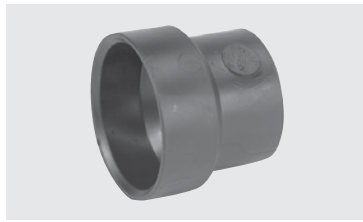
CONNECTION <b>H x FPT</b>	CHARLOTTE STYLE 101			NIBCO STYLE 5803		Dimensions				
	Part Number	Ctn Qty	Approx Net Wt.	A	B	C	D	E	F	
1-1/4"	03006	50	.07	1-5/8	15/16	1/4				
1-1/2"	02866	100	.07	1-5/8	15/16	1/4				
2"	02867	100	.11	1-7/8	1	1/4				
3"	02869	30	.37	3-1/32	1-27/32	5/16				
4"	03396	10	.58	3-3/32	1-5/16	11/32				
6"	03147	10	1.40	4-3/4	1-3/4	1/4				



**PIPE INCREASER • REDUCER**

**ABS DWV**

**A102**

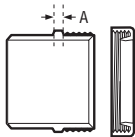


CONNECTION <b>H x H</b>	CHARLOTTE STYLE 102		NIBCO STYLE N/A						
Size	Part Number	Ctn Qty	Approx Net Wt.	Dimensions					
				A	B	C	D	E	F
2" x 1-1/2"	02948	25	.11	17/32					
3" x 1-1/2"	02949	50	.30	17/16					
3" x 2"	02950	20	.30	7/8					
4" x 2"	02951	10	.51	1-3/8					
4" x 3"	02952	20	.58	5/8					

**TRAP ADAPTER • MALE • W/ONE-PIECE POLY NUT**

**ABS DWV**

**A103P**

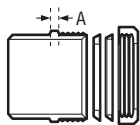


CONNECTION <b>SP x SJ</b>	CHARLOTTE STYLE 103-P		NIBCO STYLE N/A						
Size	Part Number	Ctn Qty	Approx Net Wt.	Dimensions					
				A	B	C	D	E	F
1-1/4"	03391	50	.08	3/16					
1-1/2"	03393	50	.09	3/16					
1-1/2" x 1-1/4"	03379	75	.09	3/16					

**TRAP ADAPTER • MALE • W/PLASTIC NUT & 1-1/2" & 1-1/4" WASHERS**

**ABS DWV**

**A103R**



CONNECTION <b>SP x SJ</b>	CHARLOTTE STYLE N/A		NIBCO STYLE N/A						
Size	Part Number	Ctn Qty	Approx Net Wt.	Dimensions					
				A	B	C	D	E	F
1-1/2" x 1-1/4"	03389	50	.10	3/16					
OR									
1-1/2"	03389	50	.10	3/16					

TUBE & PIPE

METAL FITTINGS & NIPPLES

PLASTIC FITTINGS & NIPPLES

VALVES

FAUCETS & BATH ACCESSORIES

SPECIALTIES

