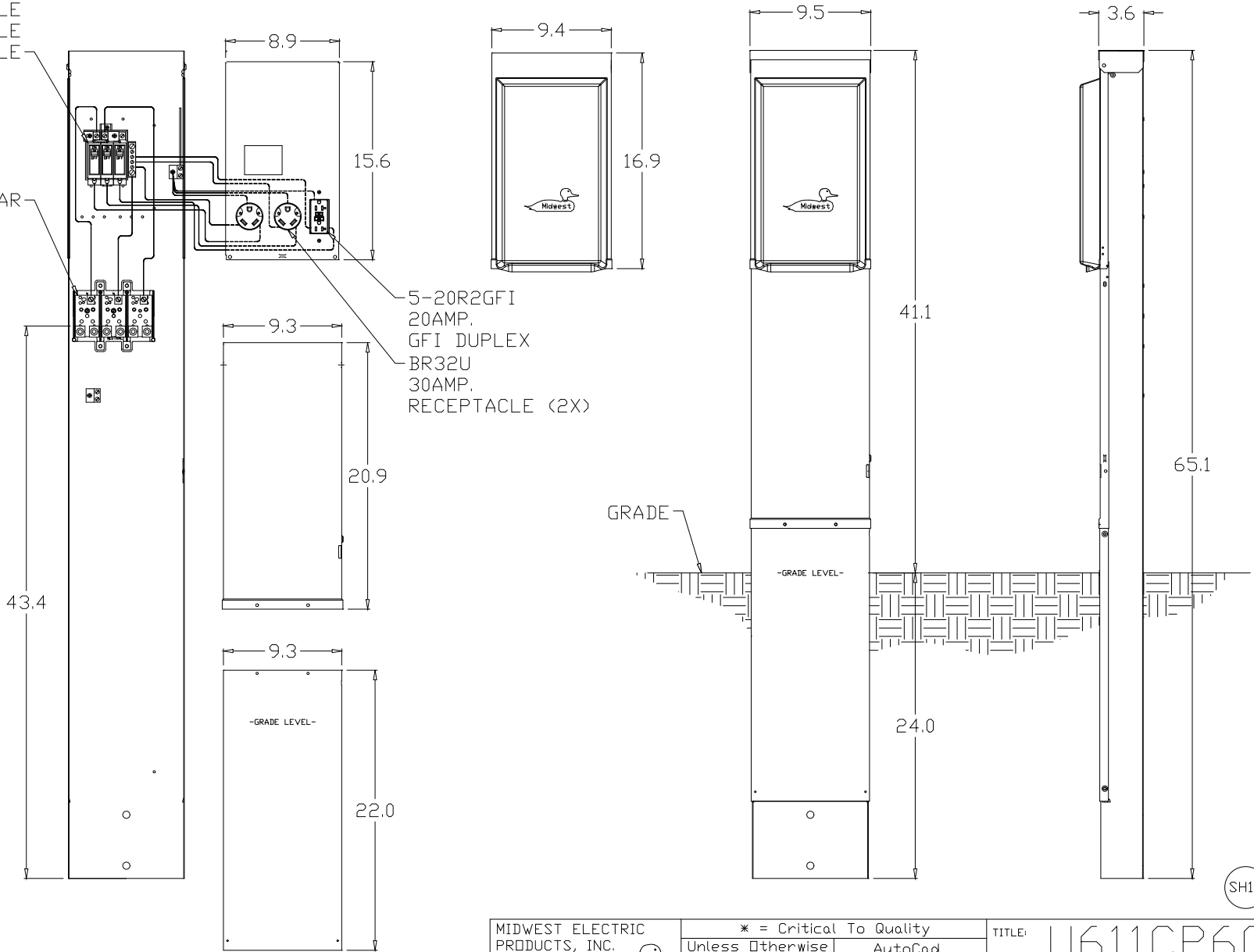


100 AMP. 3 CIRCUIT LOAD CENTER  
 30AMP. BREAKER 1-POLE  
 30AMP. BREAKER 1-POLE  
 20AMP. BREAKER 1-POLE

LOOP FEED LUG TERMINAL BAR

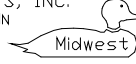


WIRE RANGE TABLE :

CONNECTOR	COPPER		ALUMINUM	
	SOLID	STRAND	SOLID	STRAND
LINE	14-8	14-2	12-8	12-2
LOAD	14-10	14-10	---	---
NEUTRAL	14-4	14-4	14-4	14-4
EQUIP. GRND.	12-8	12-2	12-8	12-2
POST LINE CONNECTORS SUITABLE FOR LOOP FEED	#1-300	KCMIL	#1-300	KCMIL
EQUIP. GRND.	12-2	12-2	12-2	12-2

NOTES: EARTH BURIAL POST

SH17

MIDWEST ELECTRIC PRODUCTS, INC. Mankato, MN 	* = Critical To Quality		TITLE: U611CP6010	
	Unless Otherwise Specified		AutoCad Generated	
Dr. By: JDE	Tolerances Dn: 3 Pl. Decimals ± .010 2 Pl. Decimals ± .030 Fractions ± 1/32 Angles ± 1/2° Holes ± .003	SCALE 1 : 1	SIZE A	DWG NO: 198B8604
Ck. By:	Dimensions Are In Inches	SHEET 1	OF 1	
CR: R0746956				

Rev.1 CR R0746956 JDE 1-14-08