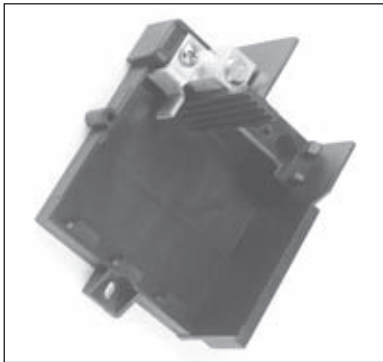
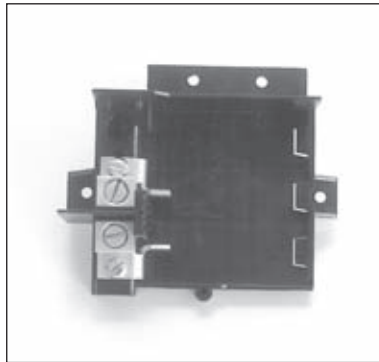


Load Center Interiors

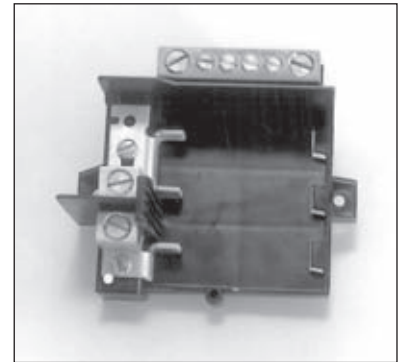
Part Number	Circuits	Volts	Amps	Line Lug Size	Neutral Lug Size
LC31X3	1	120	30	#14-1/0 CU AL	None
LC32X1	2	120/240	100	#14-1/0 CU AL	None
LC33N1	3	120/240	100	#14-1/0 CU AL	(2)#14-1/0, (2)#14-4 CU AL
LC33N1T	3	120/240	100	(2)#14-1/0 CU AL/Phase	(2)#14-1/0, (2)#14-4 CU AL
LC31N3	1	120	30	#14-1/0 CU AL	(2)#12-2 CU AL
LC33N7	3	120/240	70	#14-1/0 CU AL	(4)#14-2 CU AL
LC44X1	4	120/240	100	#14-1/0 CU AL	None
LC44X2	4	120/240	100	(2)#14-1/0 CU AL	None
LC55N1T	5	120/240	100	(2)#14-1/0 CU AL/Phase	(2)#14-1/0, (2)#14-4 CU AL
LC55N1	5	120/240	100	#14-1/0 CU AL	(2)#14-1/0, (2)#14-4 CU AL
LC88PC	8	120/240	200	#6-250KCMIL	None
LC88X2	8	120/240	200	(2)#1-300KCMIL CU AL	None
LC1212PC	12	120/240	200	#6-250KCMIL	None
PC2LC	2	120/240	125	#6-2/0 CU AL	None
LCBS	4	120/240	200	#1-4/0	#1-4/0, #6-2/0, #14-4
LCBNS	1	120/240	200	#1-4/0	#1-4/0, #6-2/0, #14-4
LCTL	4	120/240	200	#1-4/0	#1-4/0, #6-2/0, #14-4
LCTNL	4	120/240	200	#1-4/0	#1-4/0, #6-2/0, #14-4



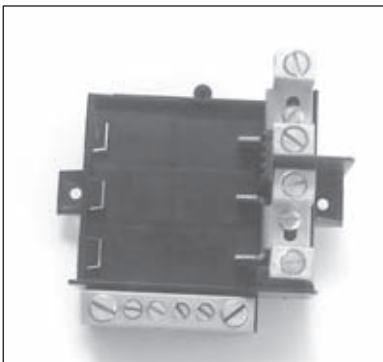
LC31X3



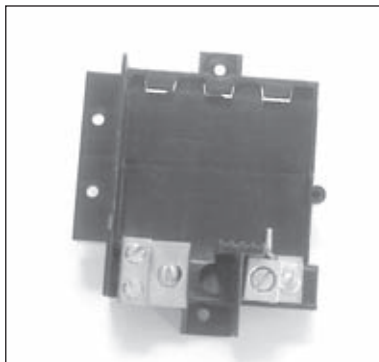
LC32X1



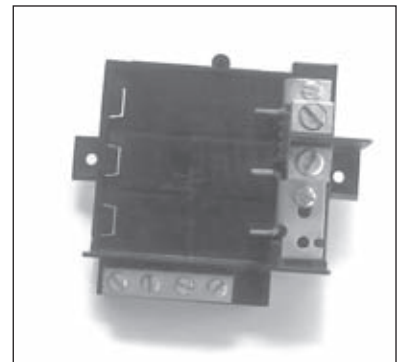
LC33N1



LC33N1T



LC31N3



LC33N7